

3-Cylinder, Low-Pressure Diaphragm Pumps



ZETA-P 42 low pressure 3-cylinder diaphragm pumps have anodized aluminum bodies with plasticized aluminum heads, stainless steel valves and glass-filled nylon manifolds. A control valve with pressure gauge is standard on all models.

ZETA-P pumps are excellent for various horticultural and agricultural spraying applications.

Pumps are available with Universal VA Drive Face, hydraulic motor flange or gear reductions for 4 to 6.5 HP gas engines.

| Model | GPM | l/min | PSI | bar | RPM | Drive Configuration | Weight |
|----------------------|------|-------|-----|-----|-----|---|----------|
| ZETA-P 42 VA | 10.5 | 42 | 300 | 20 | 550 | Universal VA Drive Face. | 24.3 LBS |
| ZETA-P 42 VAGR3/4 | 10.5 | 42 | 300 | 20 | 550 | Gear Reduction for 3/4" Shaft Gas Engine, 4-6.5 HP | 31.3 LBS |
| ZETA-P 42 MI1 | 10.5 | 42 | 300 | 20 | 550 | 2-Bolt, A-Flange, 1" Hollow Shaft for Hydraulic Motor | 24.3 LBS |

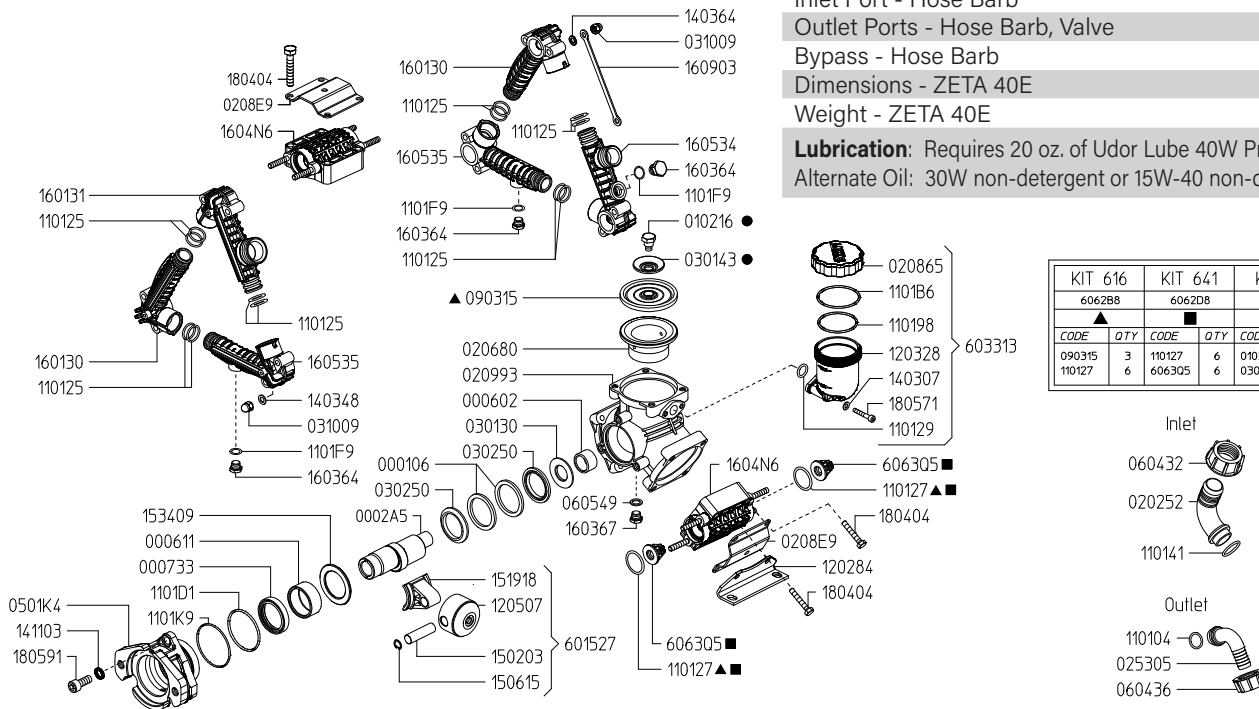
| Specifications | ZETA-P 42 | Description | Part # |
|------------------------|--------------------|-----------------------------|--------|
| Inlet Port | 1-1/4" Hose Barb | Diaphragm Kit - GREENTECH | |
| Outlet Ports - Valve | (2) 1/2" Hose Barb | Diaphragm Bolt & Washer Kit | |
| Bypass | 3/4" Hose Barb | Valve Kit | |
| Piston Diameter | 55.0mm | Regulator Repair Kit | |
| Crankshaft Stroke/Code | | Complete Repair Kit | |
| Dims. - Pump Only | 11"L x 11"W x 12"H | | |
| - GR Version | 16"L x 11"W x 12"H | | |

Lubrication: Requires 20 oz. of Udor Lube 40W Premium Pump Oil.
Alternate Oil: 30W non-detergent or 15W-40 non-detergent oil.



| | |
|---------------------------------|--------------------|
| Maximum Flow | 10.5 GPM / 44 lpm |
| Maximum Pressure | 300 PSI / 20 bar |
| Maximum RPM | 550 RPM |
| Inlet Port - Hose Barb | 1-1/4" HB |
| Outlet Ports - Hose Barb, Valve | (2) 1/2" HB |
| Bypass - Hose Barb | 3/4" HB |
| Dimensions - ZETA 40E | 11"L x 11"W x 12"H |
| Weight - ZETA 40E | 29 lbs |

Lubrication: Requires 20 oz. of Udor Lube 40W Premium Pump Oil.
Alternate Oil: 30W non-detergent or 15W-40 non-detergent oil.



Revised 5-26-2026

| Part # | Description | Qty | Part # | Description | Qty |
|---------|-------------------------------|-----|---------|-------------------------------------|-----|
| 0001.06 | SPACER | 2 | 1203.28 | OIL RESERVOIR | 1 |
| 0002.A5 | CRANKSHAFT - MI | 1 | 1205.07 | ALUMINUM PISTON | 3 |
| 0006.02 | BUSHING | 1 | 1208.84 | MOUNTING RAIL | 2 |
| 0006.11 | BUSHING | 1 | 1403.07 | WASHER | 2 |
| 0007.33 | OIL SEAL | 1 | 1403.48 | WASHER | 12 |
| 0102.16 | DIAPHRAGM BOLT ● | 3 | 1411.03 | WASHER | 3 |
| 0202.52 | HOSE BARB ELBOW - INLET | 1 | 1502.03 | PIN | 3 |
| 0206.80 | SLEEVE | 3 | 1506.15 | SNAP RING | 3 |
| 0208.65 | CAP - OIL RESERVOIR | 1 | 1519.18 | CONNECTING ROD | 3 |
| 0208.E9 | REINFORCING PLATE | 3 | 1534.09 | SPACER | 1 |
| 0209.93 | PUMP BODY | 1 | 1601.30 | MANIFOLD TUBE | 2 |
| 0253.05 | HOSE BARB ELBOW - BYPASS | 1 | 1601.31 | MANIFOLD TUBE | 1 |
| 0301.30 | SPACER | 1 | 1603.64 | PLUG - MANIFOLD | 3 |
| 0301.43 | DIAPHRAGM WASHER ● | 3 | 1603.64 | MANIFOLD TUBE | 1 |
| 0302.50 | SEAL | 2 | 1603.67 | PLUG | 2 |
| 0310.09 | ACORN NUT | 12 | 1604.N6 | HEAD | 3 |
| 0501.K4 | BEARING FLANGE - MI | 1 | 1605.35 | MANIFOLD TUBE/DRAIN | 2 |
| 0604.32 | NUT - INLET HOSE BARB | 1 | 1609.03 | MANIFOLD BRACE | 3 |
| 0604.36 | NUT - BYPASS HOSE BARB | 1 | 1804.04 | HEX BOLT | 12 |
| 0605.49 | GASKET | 1 | 1805.71 | ALLEN BOLT | 2 |
| 0903.15 | DIAPHRAGM 0 GREENTECH ▲ | 3 | 1805.91 | ALLEN BOLT | 3 |
| 1101.04 | O-RING - BYPASS HOSE BARB | 1 | 6015.27 | CONNECTING ROD ASSY | 3 |
| 1101.07 | O-RING - VALVE ▲ ■ | 6 | 6033.13 | OIL RESERVOIR ASSEMBLY | 1 |
| 1101.25 | O-RING - MANIFOLD TUBE | 12 | 6063.Q5 | VALVE ASSY W/O O-RING ■ | 6 |
| 1101.29 | O-RING - OIL RESERVOIR | 1 | 6062.B8 | DIAPHRAGM KIT - GREENTECH (KIT 616) | 1 |
| 1101.41 | O-RING - INLET HOSE BARB | 1 | 6062.D8 | VALVE KIT IN/OUT (KIT 641) | 1 |
| 1101.98 | O-RING - OIL RESERVOIR, INNER | 1 | 6640.02 | DIAPHRAGM BOLT/WASHER KIT (KIT 81) | 1 |
| 1101.B6 | O-RING - OIL RESERVOIR, OUTER | 1 | | | |
| 1101.D1 | O-RING | 1 | | | |
| 1101.F9 | O-RING - MANIFOLD PLUG | 3 | | | |
| 1101.K9 | O-RING | 1 | | | |

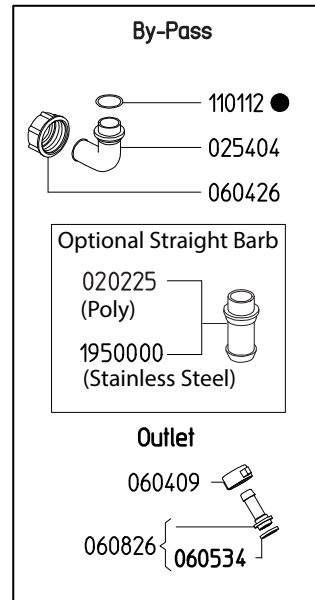
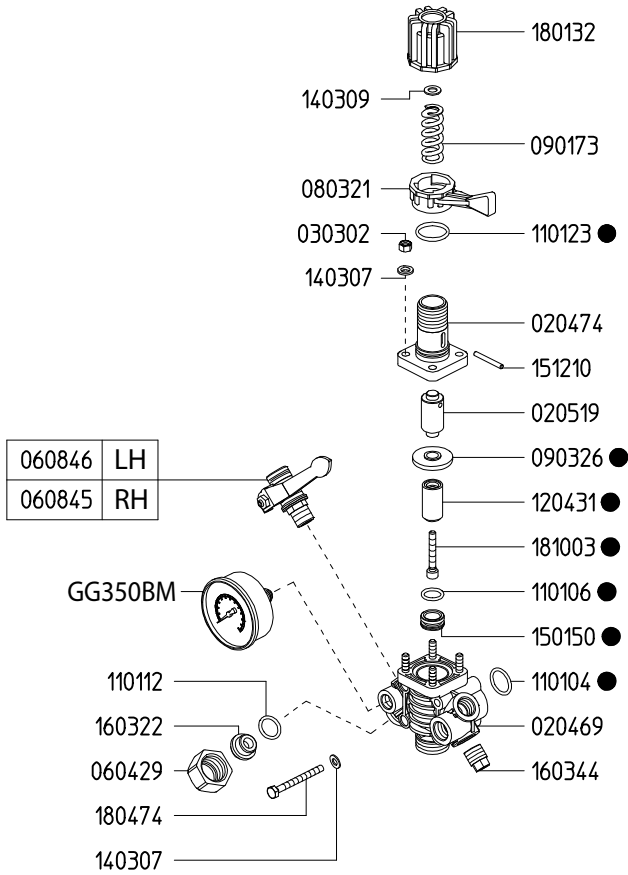
▲ Parts in 6062.B8 (Kit 616)

■ Parts in 6062.D8 (Kit 641)

● Parts in 6640.02 (Kit 81)

Adjustable Pressure Regulator

| | |
|---------------------------------|--------------------|
| Maximum Flow | 27.0 GPM / 102 lpm |
| Maximum Pressure | 350 PSI / 24 bar |
| Inlet Port - Hose Barb | - |
| Outlet Ports - Hose Barb, Valve | (2) 1/2" HB |
| Bypass - Hose Barb | 3/4" HB |



| 6062A9 | |
|---------|-----|
| KIT 608 | |
| CODE | QTY |
| 090326 | 1 |
| 110104 | 1 |
| 110106 | 1 |
| 110112 | 1 |
| 110123 | 1 |
| 120431 | 1 |
| 150150 | 1 |
| 181003 | 1 |

Revised 5-26-20264

| Part # | Description | Qty |
|---------|--|-----|
| 0202.25 | BYPASS HOSE BARB - STRAIGHT (OPTIONAL) | 1 |
| 0204.69 | BODY | 1 |
| 0204.70 | BODY | 1 |
| 0205.19 | CYLINDER | 1 |
| 0254.04 | BYPASS HOSE BARB - ELBOW | 1 |
| 0303.02 | NUT | 4 |
| 0604.09 | BARB NUT | 2 |
| 0604.26 | BYPASS BARB NUT | 1 |
| 0604.29 | NUT | 1 |
| 0605.34 | GASKET | 2 |
| 0608.26 | 1/2" HOSE BARB W/GASKET | 2 |
| 0608.45 | BALL VALVE - RIGHT | 1 |
| 0608.46 | BALL VALVE - LEFT | 1 |
| 0803.21 | LEVER | 1 |
| 0901.73 | SPRING (LP 300 PSI) | 1 |
| 0903.26 | DIAPHRAGM ● | 1 |
| 1101.04 | O-RING ● | 1 |

| Part # | Description | Qty |
|----------|---|-----|
| 1101.06 | O-RING ● | 1 |
| 1101.12 | O-RING ● | 2 |
| 1101.23 | O-RING ● | 1 |
| 1204.31 | POPPET ● | 1 |
| 1403.07 | WASHER | 6 |
| 1501.50 | SEAT ● | 1 |
| 1512.10 | PIN | 1 |
| 1603.22 | PLUG | 1 |
| 1603.44 | PLUG | 1 |
| 1801.32 | ADJUSTMENT KNOB | 1 |
| 1804.74 | BOLT | 2 |
| 1810.03 | STAINLESS STEEL BOLT ● | 1 |
| 19500.00 | BYPASS HOSE BARB - STRAIGHT, SS (OPTIONAL) | 1 |
| 6062.A9 | REPAIR KIT FOR 6010.9X CONTROL UNIT (KIT 608) | 1 |
| GG350BM | PRESSURE GAUGE - 350 PSI BACK MOUNT | 1 |

● Parts Included in Repair Kit #6062.A9 (KIT 608)

The control unit features a manual dump valve, pressure control knob, glycerine filled pressure gauge, and two ball valve discharge ports.

1. Before operating or re-operating the pump move lever (0803.21) to the dump position (Right) so the pump will start at zero pressure. (Failure to do so will void the pump warranty.)
2. Turn pressure adjustment knob (1801.32) counter clockwise to relieve spring tension. This step only applies to the initial start up and is not necessary in daily operation of pump.
3. Start unit and let run until air is evacuated from the system.
4. Move lever (0803.21) to the pressure position (Left) open spray gun or spray boom and turn the pressure adjustment knob (1801.32) clockwise until desired operating pressure is achieved.

All Dimensions are WITHOUT Control Unit or Regulator

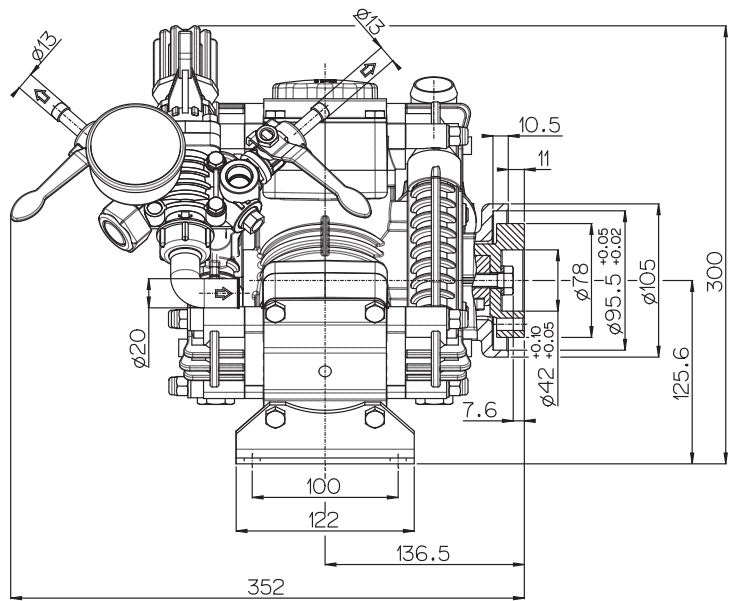
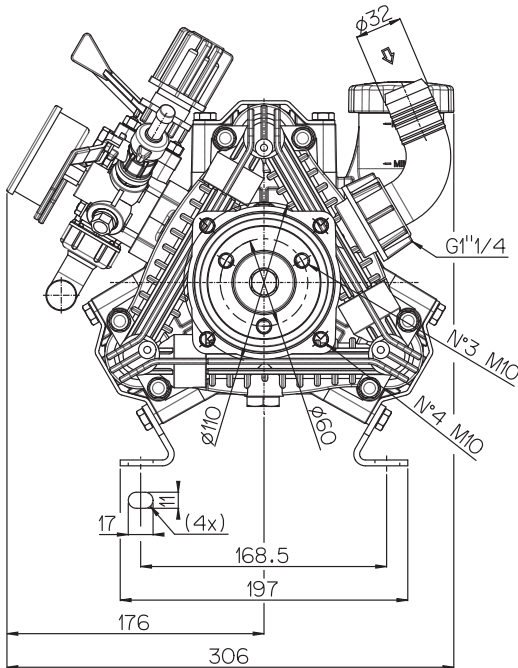
Dimensional Drawings are Shown in Millimeters. To Convert to Inches, Multiply Dimension x 0.03937

Specifications

ZETA-P 42

| | |
|-------------------------|------------------------------|
| Inlet Port - Hose Barb | 1-1/4" HB |
| Outlet Port - Hose Barb | 3/4" HB |
| Dimensions | 11"L x 11"W x 12"H |
| Diaphragm Material | GREENTECH (Std) Buna-N (Opt) |

Lubrication: Requires 20 oz. of Udor Lube 40W Premium Pump Oil. Alternate Oil: 30W non-detergent or 15W-40 non-detergent oil.



TORQUE SPECS

| Ref. | Description | Ft./lb. | Nm |
|------|-----------------------------------|---------|----|
| 1 | Diaphragm Bolts (Use Loctite 243) | 18 | 25 |
| 2 | Head Bolts | 18 | 25 |
| 3 | Pulsation Dampener Bolts | 18 | 25 |
| 4 | Oil Cup Bolts | 6 | 8 |
| 5 | Manifold Bolts (Plastic) | 7 | 10 |

