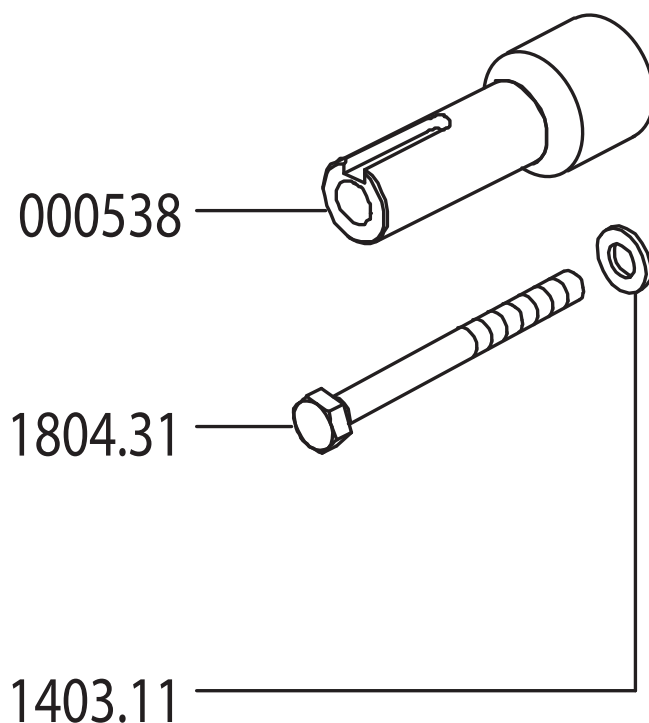


25mm to 1" Male Solid Shaft Adapter



Revised 1-5-2026

Part #	Description	Qty
0005.38	25MM FEMALE TO 1" MALE SHAFT ADAPTER	1
1403.11	FLAT WASHER - M10	1
1804.31	BOLT - HEX - M10x1.5x90 - ZINC	1

INSTALLATION INSTRUCTIONS

NOTE: USE BLUE THREADLOCKER OR EQUIVALENT ON ALL BOLTS.

Attach the shaft to the pump crankshaft using the hex bolt (_____) and washer (_____).

NOTE: Adequate protection must be provided in guarding around ALL moving parts, including belts, shafts, pulleys, and drive couplers.