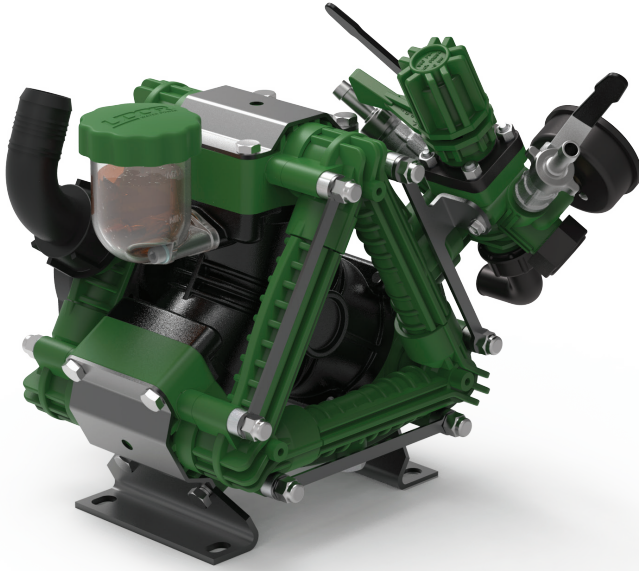


3-Cylinder, Low-Pressure Diaphragm Pumps



ZETA-PP 42 low pressure 3-cylinder diaphragm pumps have anodized aluminum bodies with polypropylene heads & manifolds, and stainless steel valves. A control valve with pressure gauge is standard on all models.

ZETA-PP pumps are excellent for soft wash as well as various horticultural and agricultural spraying applications.

Model	GPM	l/min	PSI	bar	RPM	Drive Configuration	Weight
ZETA-PP 42 VA	10.5	42	300	20	550	Universal VA Drive Face.	24.3 LBS
ZETA-PP 42 VAGR3/4	10.5	42	300	20	550	Gear Reduction for 3/4" Shaft Gas Engine, 4-6.5 HP	31.3 LBS
ZETA-PP 42 MI1	10.5	42	300	20	550	2-Bolt, A-Flange, 1" Hollow Shaft for Hydraulic Motor	24.3 LBS

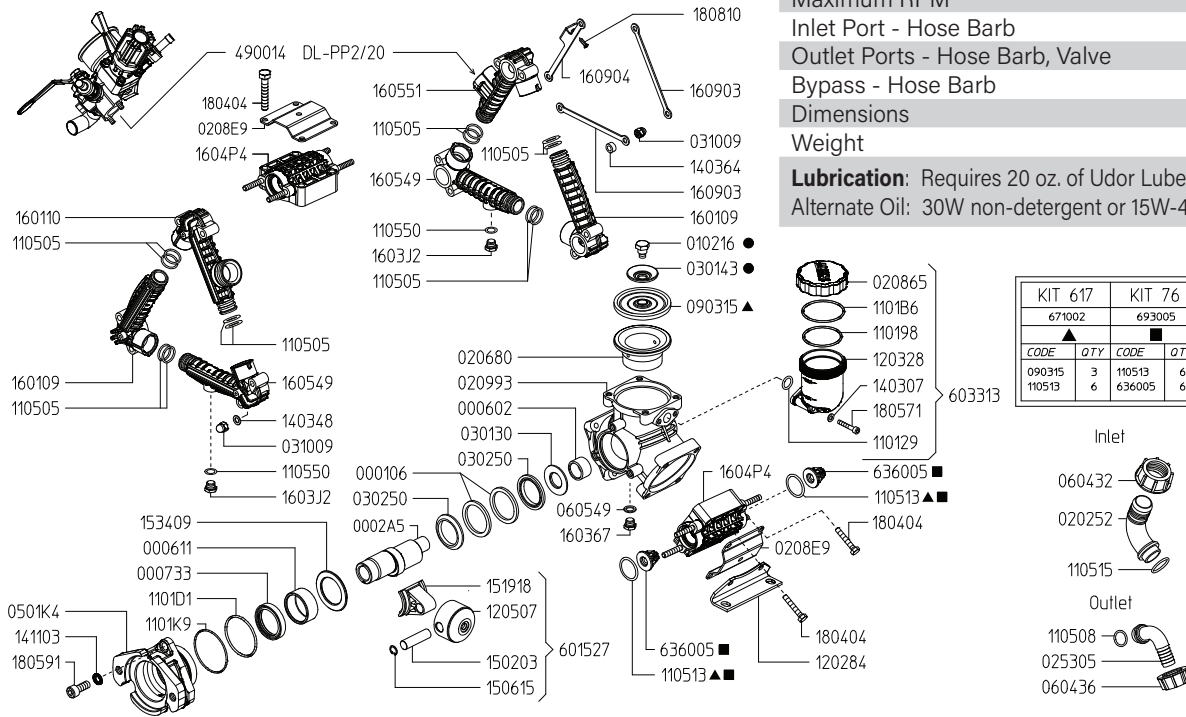
Specifications	ZETA-PP 42	Description	Part #
Inlet Port	1-1/4" Hose Barb	Diaphragm Kit - GREENTECH	6710.02
Outlet Ports - Valve	(2) 1/2" Hose Barb	Diaphragm Bolt & Washer Kit	6640.02
Bypass	3/4" Hose Barb	Valve Kit	6930.05
Piston Diameter	55.0mm		
Crankshaft Stroke/Code			
Dims. - Pump Only	11"L x 11"W x 12"H		
- GR Version	16"L x 11"W x 12"H		

Lubrication: Requires 20 oz. of Udor Lube 40W Premium Pump Oil.
Alternate Oil: 30W non-detergent or 15W-40 non-detergent oil.



Maximum Flow	10.5 GPM / 42.0 lpm
Maximum Pressure	300 PSI / 20 bar
Maximum RPM	550 RPM
Inlet Port - Hose Barb	1-1/4" HB
Outlet Ports - Hose Barb, Valve	(2) 1/2" HB
Bypass - Hose Barb	3/4" HB
Dimensions	11"L x 11"W x 12"H
Weight	24.3 lbs

Lubrication: Requires 20 oz. of Udor Lube 40W Premium Pump Oil.
Alternate Oil: 30W non-detergent or 15W-40 non-detergent oil.



KIT 617		KIT 76		KIT 81	
671002		693005		664002	
CODE	QTY	CODE	QTY	CODE	QTY
090315	3	110513	6	010216	3
110513	6	636005	6	030143	3

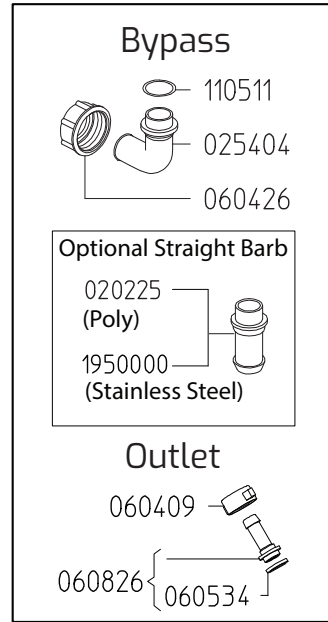
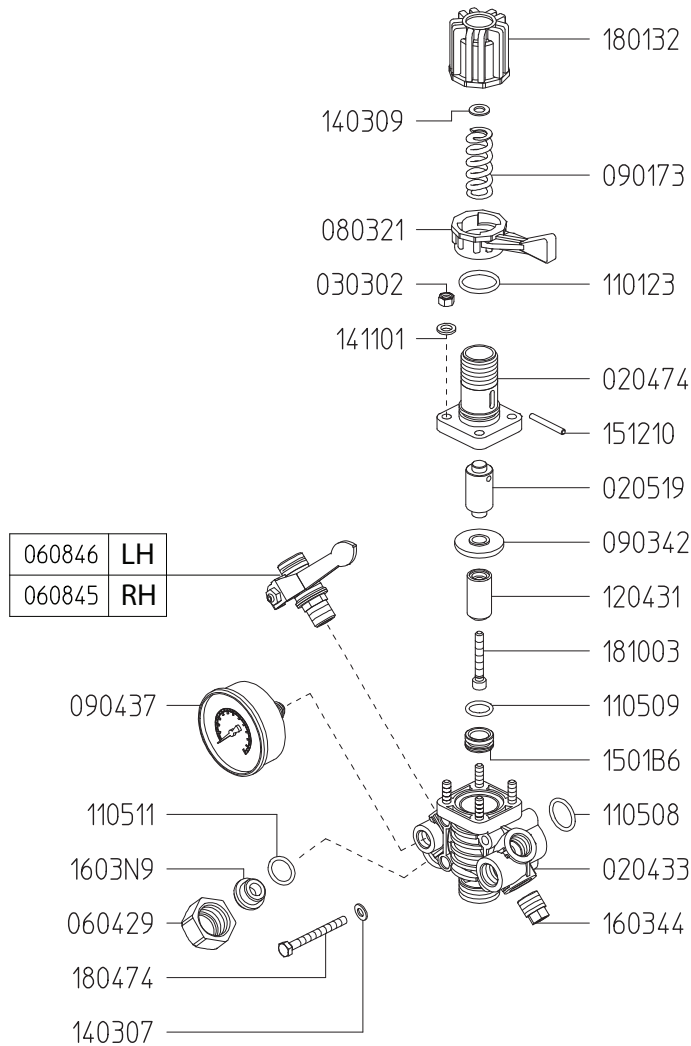
Revised 3-24-2025

Part #	Description	Qty	Part #	Description	Qty
0001.06	RETAINER RING	2	1205.07	PISTON	3
0002.A5	CRANKSHAFT - ZETA-PP MI	1	1403.07	WASHER	2
0006.02	BUSHING D25	1	1403.48	WASHER	6
0006.11	BUSHING D40	1	1403.64	SPACER	6
0007.33	OIL SEAL	1	1411.03	WASHER	3
0102.16	DIAPHRAGM BOLT ●	3	1502.03	PIN	3
0202.52	INLET HOSE BARB ELBOW	1	1506.15	SNAP RING	3
0206.80	SLEEVE -	3	1519.18	CONNECTING ROD	3
0208.65	OIL RESERVOIR COVER	1	1534.09	SPACER	1
0208.E9	REINFORCING PLATE	3	1601.09	MANIFOLD TUBE	2
0209.93	CRANKCASE	1	1601.10	MANIFOLD TUBE	1
0253.05	OUTLET HOSE BARB ELBOW	1	1603.67	PLUG	1
0301.43	DIAPHRAGM WASHER ●	3	1603.J2	PLUG	2
0302.50	ROD SPACER	2	1604.P4	HEAD	3
0310.09	NUT	12	1605.49	MANIFOLD TUBE W/DRAIN	2
0501.K4	FLANGE - ZETA-PP MI	1	1605.51	MANIFOLD TUBE	1
0604.32	NUT - INLET BARB	1	1609.03	TUBE BRACE	2
0604.36	NUT - OUTLET BARB	1	1609.04	TUBE BRACE	1
0605.49	GASKET	1	1804.04	HEX BOLT	12
0903.15	DIAPHRAGM▲	3	1805.71	ALLEN BOLT	2
1101.29	O-RING, OIL RESERVOIR	1	1805.91	ALLEN BOLT	3
1101.98	O-RING, OIL RESERVOIR COVER, INNER	1	1808.10	SCREW	1
1101.B6	O-RING, OIL RESERVOIR COVER, OUTER	1	4900.14	DL-PP2/20 REGULATOR	1
1101.D1	O-RING	1	6015.27	CONNECTING ROD ASS'Y	3
1101.K9	O-RING	1	6033.13	OIL RESERVOIR - COMPLETE	1
1105.05	O-RING	12	6360.05	VALVE ASS'Y W/O O-RING ■	6
1105.08	O-RING - OUTLET BARB	1	6640.02	DIAPHRAGM BOLT & WASHER (81)	1
1105.13	O-RING, VALVE ▲ ■	6	6710.02	DIAPHRAGM KIT GREENTECH (KIT 617)	1
1105.15	O-RING - INLET BARB	1	6930.05	IN/OUTLET VALVE KIT (KIT 76)	1
1105.50	O-RING, DRAIN PLUG	2			
1202.84	PUMP MOUNTING RAIL	2			
1203.28	OIL RESERVOIR	1			

- Parts in 6640.02 (Kit 81)
- Parts in 6710.02 (Kit 617)
- ▲ Parts in 6930.05 (Kit 76)

Adjustable Pressure Regulator

Maximum Flow	270 GPM / 102 lpm
Maximum Pressure	350 PSI / 24 bar
Inlet Port - Hose Barb	-
Outlet Ports - Hose Barb, Valve	(2) 1/2" HB
Bypass - Hose Barb	3/4" HB



Revised 3-24-2025

Part #	Description	Qty
0202.25	BYPASS HOSE BARB - STRAIGHT (OPTIONAL)	1
0204.33	CONTROL BODY "DL-PP" - GREEN	1
0204.74	BODY	1
0205.19	CYLINDER	1
0254.04	BYPASS HOSE BARB - ELBOW	1
0303.02	NUT	4
0604.09	BARB NUT	2
0604.26	BYPASS BARB NUT	1
0604.29	BRASS NUT G3/4	1
0605.34	GASKET	2
0608.26	1/2" HOSE BARB W/GASKET	2
0608.45	BALL VALVE RIGHT	1
0608.46	BALL VALVE LEFT	1
0803.21	LEVER	1
0901.73	PRESS.SPRING "DL/20"	1
0903.42	DIAPHRAGM - BUNA	1
0904.37	PRESSURE GAUGE (20BAR)	1

Part #	Description	Qty
1101.23	O-RING	1
1105.08	O-RING	1
1105.09	O-RING D15,08	1
1105.11	O-RING D17,12	1
1204.31	POPPET	1
1403.07	WASHER	2
1403.09	WASHER D10,5	1
1411.01	SERRATED WASHER D6	4
1501.B6	SEAT "DL" D14	1
1512.10	PIN	1
1603.44	PLUG G3/8	1
1603.N9	PLUG	1
1801.32	ADJUSTABLE KNOB "DL"	1
1804.74	BOLT	2
1810.03	STAINLESS STEEL BOLT	1
19500.00	BYPASS HOSE BARB - STRAIGHT, SS (OPTIONAL)	1

The control unit features a manual dump valve, pressure control knob, glycerine filled pressure gauge, and two ball valve discharge ports.

1. Before operating or re-operating the pump move lever (0803.21) to the dump position (Right) so the pump will start at zero pressure. (Failure to do so will void the pump warranty.)
2. Turn pressure adjustment knob (1801.32) counter clockwise to relieve spring tension. This step only applies to the initial start up and is not necessary in daily operation of pump.
3. Start unit and let run until air is evacuated from the system.
4. Move lever (0803.21) to the pressure position (Left) open spray gun or spray boom and turn the pressure adjustment knob (1801.32) clockwise until desired operating pressure is achieved.

All Dimensions are WITHOUT Control Unit or Regulator

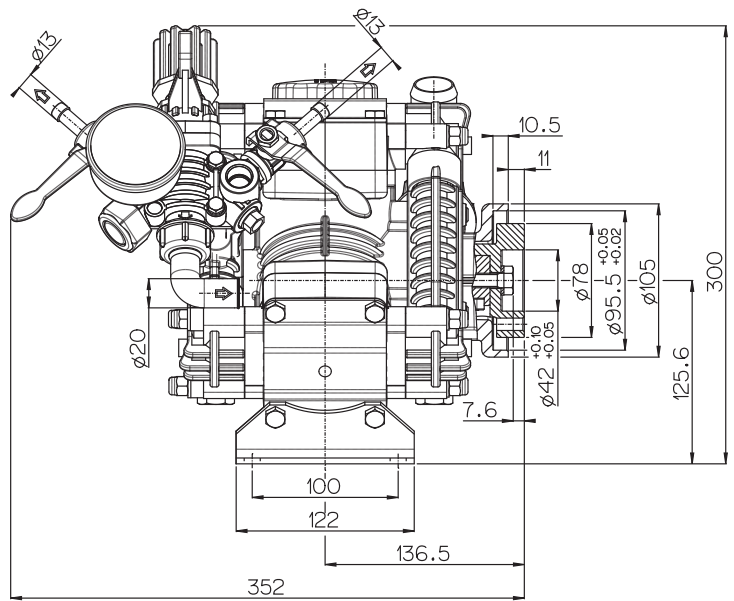
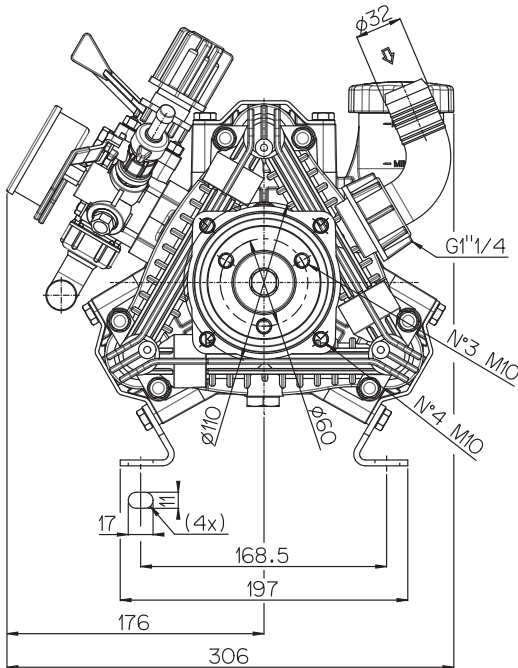
Dimensional Drawings are Shown in Millimeters. To Convert to Inches, Multiply Dimension x 0.03937

Specifications

ZETA 70

Inlet Port - Hose Barb	1-1/4" HB
Outlet Port - Hose Barb	3/4" HB
Dimensions	11"L x 11"W x 12"H
Diaphragm Material	GREENTECH (Std) Buna-N (Opt)

Lubrication: Requires 20 oz. of Udor Lube 40W Premium Pump Oil.
Alternate Oil: 30W non-detergent or 15W-40 non-detergent oil.



TORQUE SPECS

Ref.	Description	Ft./lb.	Nm
1	Diaphragm Bolts (Use Loctite 243)	18	25
2	Head Bolts	18	25
3	Pulsation Dampener Bolts	18	25
4	Oil Cup Bolts	6	8
5	Manifold Bolts (Plastic)	7	10

