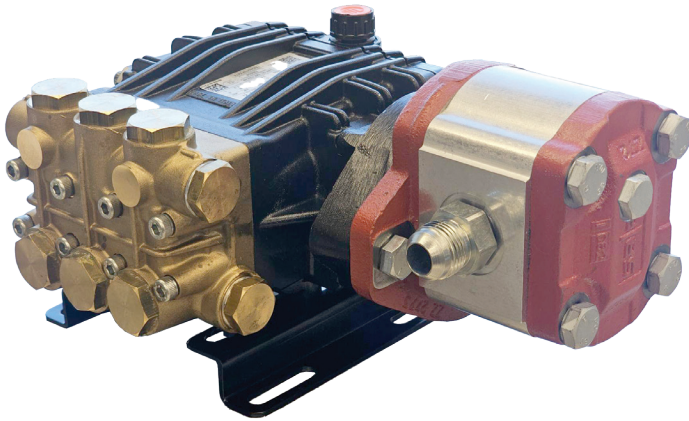


Hydraulic Drive Assemblies

Pump, Hydraulic Motor, Mounting Rails
1750 RPM



- Brass Manifold
- Heat Treated Crankshaft
- Stainless Steel Piston Guides
- High Strength Aluminum Alloy
- Industrial Quality Ball Bearings and Needle Bearings
- Solid Ceramic Plungers
- Stainless Steel Check Valves
- Heavy Duty Flat Base High Pressure Seals
- Dual Oil Sight Gauges
- 10.25 oz. Capacity Vented Oil Bath Crank Case
- 3/8" BSP-F Inlet. 3/8" BSP-F Outlet
- Max Fluid Temp, 160°F

PND Series Hydraulic Drive Assemblies

PND Series standard duty hydraulic drive plunger pump assemblies include models with flow rates from 3.0 to 4.0 GPM and pressures up to 2030 PSI.

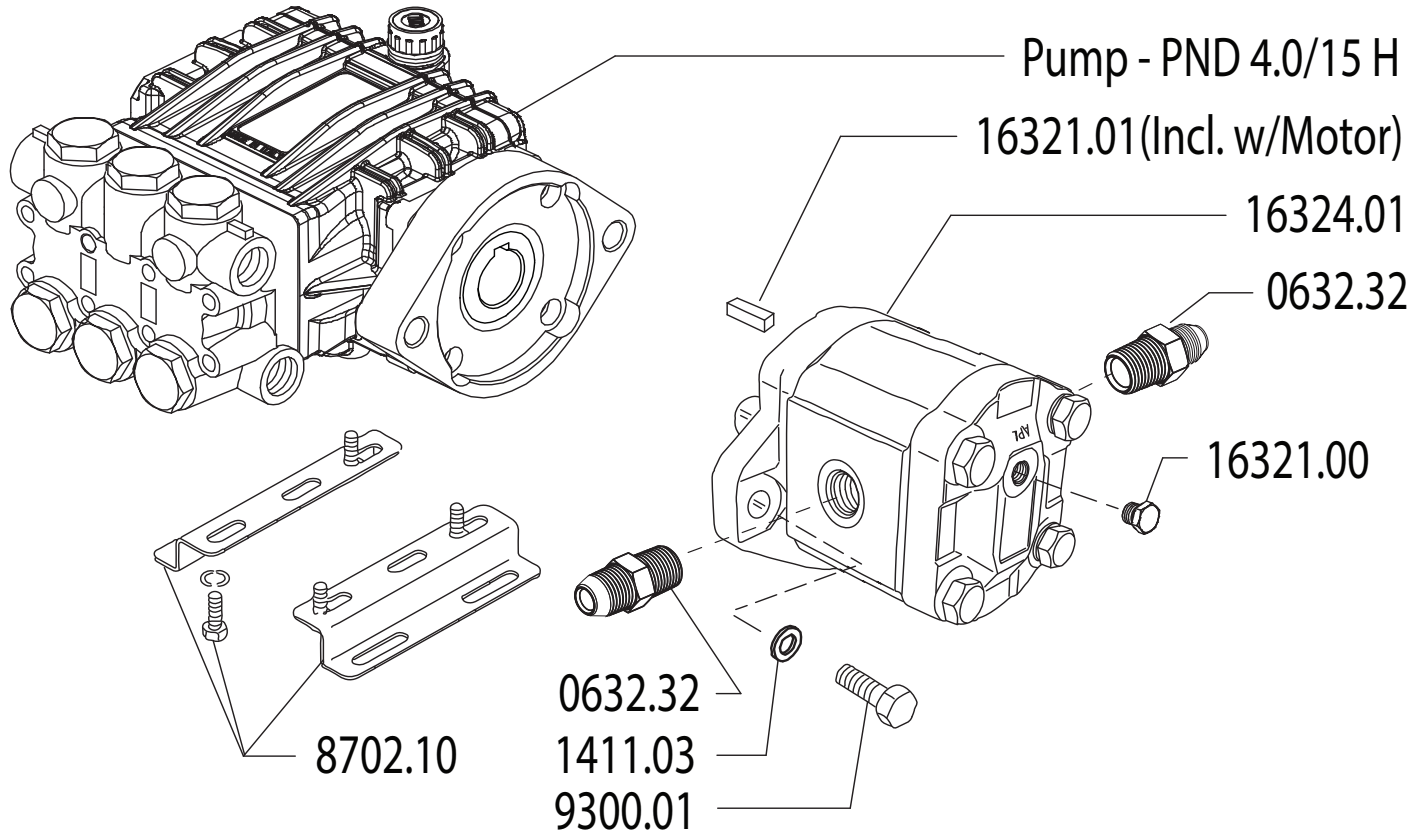
Applications include general pressure cleaning, sewer jetting, vehicle wash equipment and fire fighting applications.

	Model	GPM	l/min	PSI	bar	Hydraulic Requirements	Weight
1750 RPM	PND 3.0/20 ZH	3.0	11.4	2030	140	5.0 GPM @ 2200 PSI	24 lbs
	PND 4.0/15 ZH	4.0	15.0	2030	140	5.0 GPM @ 2200 PSI	24 lbs



Hydraulic Drive Assembly PND 4.0/15 ZH

MAX FLOW	4.0 GPM / 15.0 L/MIN
MAX PRESSURE	2030 PSI / 140 BAR
RATED PUMP SPEED	1750 RPM
POWER REQUIREMENT	5.4 HP ELECTRIC
LUBRICATION	10.25 OZ UDOR LUBE



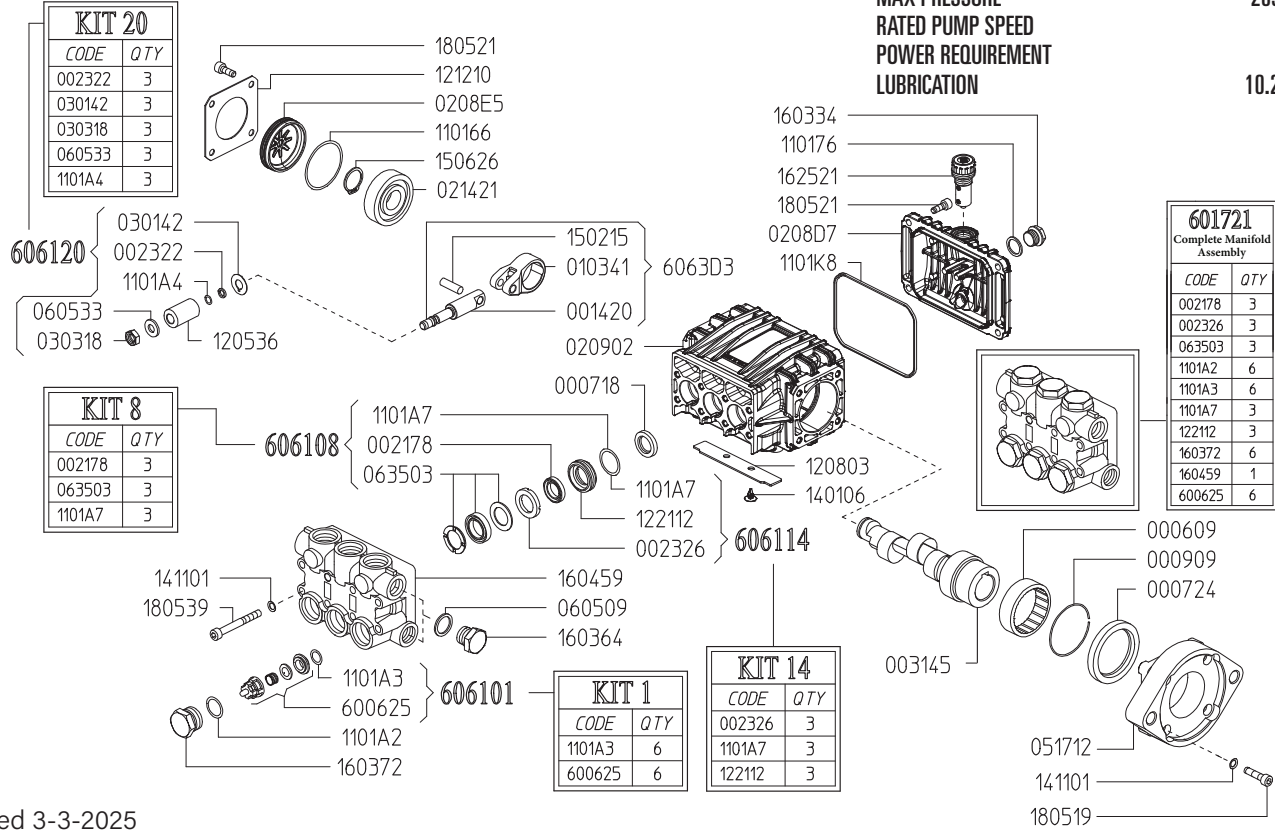
Revised 3-3-2025

Part #	Description	Qty
0632.32	HYDRAULIC FITTING	2
1411.03	WASHER - D10	2
8702.10	RAIL KIT WITH BOLTS/WASHERS	1
9300.01	HEX BOLT - 7/16-14X1	2
16321.00	CASE DRAIN PLUG - #4 ORB	1

Part #	Description	Qty
16321.01	KEY - 5/32" X 6/32" X 1/2"	1
16322.01	HYDRAULIC MOTOR REPAIR KIT	-
16324.01	HYDRAULIC MOTOR - PN	1
PND4015H	PUMP - 4.0 GPM @ 1500 PSI	1

MAX FLOW
MAX PRESSURE
RATED PUMP SPEED
POWER REQUIREMENT
LUBRICATION

4.0 GPM / 15.0 L/MIN
2030 PSI / 140 BAR
1750 RPM
5.4 HP ELECTRIC
10.25 OZ UDOR LUBE



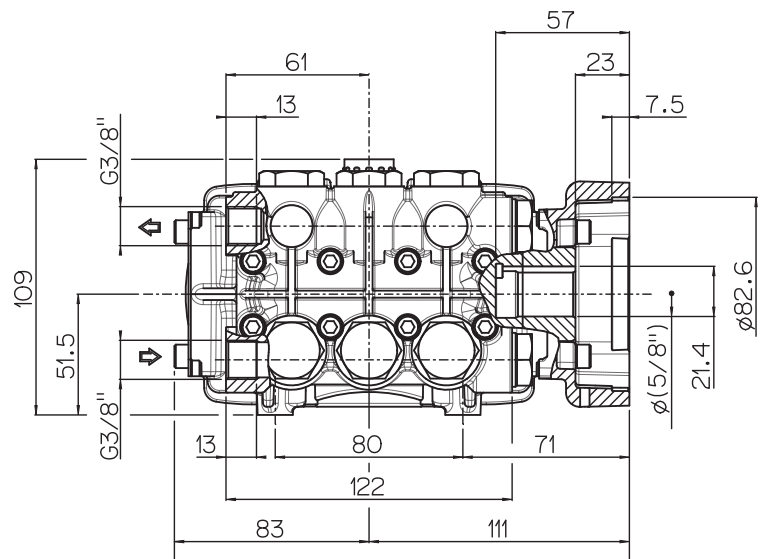
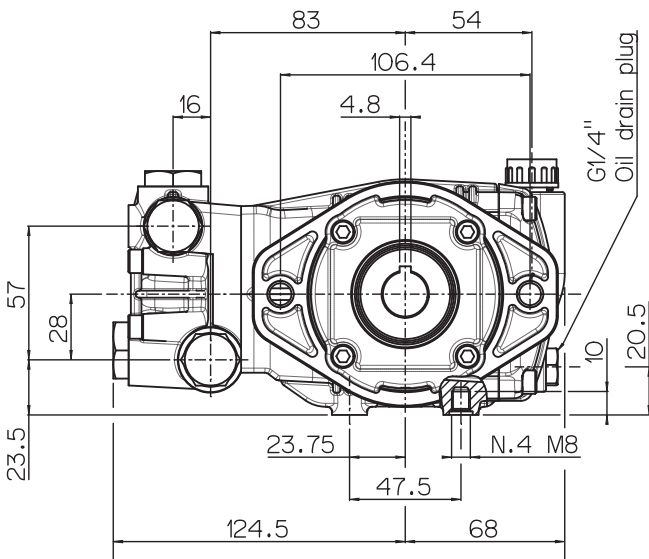
Revised 3-3-2025

Part #	Description	Qty	Part #	Description	Qty
0006.09	BUSHING D45	1	1205.36	CERAMIC PLUNGER D15X30 "PN"	3
0007.18	OIL SEAL D15X24X5	3	1208.03	COVER - PN 2024	1
0007.24	OIL SEAL D40X52X7	1	1212.10	METAL COVER "PN"	1
0009.09	ELASTIC RING D52X2.5	1	1221.12	LOW PRESS. SEAL RETAINER D18 ^{C E}	3
0014.20	PLUNGER GUIDE D15/18 "PN"	3	1401.06	RIVET M6X10	2
0021.78	WATER SEAL LP. D15 ^{B E}	3	1411.01	SERATED WASHER D6	12
0023.22	RING D6.3X9X1.3 2021 "PN/C/G" ^{C E}	3	1502.15	PIN D7X25.5	3
0023.26	INTERMEDIATE RING D18 "PN" ^{C E}	3	1506.26	SNAP RING D20	1
0031.45	HOLLOW SHAFT "PN" D5/8" ECC=6.25	1	1603.34	PLUG G1/4	1
0103.41	CONNECTING ROD "PN/PS"	3	1603.64	PLUG G3/8	1
0208.D7	BACK COVER "PN"	1	1603.69	OIL PLUG G1/4+GASKET	1
0208.E5	COVER "PN"	1	1603.72	VALVE PLUG "PN"PISTON D15/18 ^{A E}	6
0209.02	CRANKCASE "PN/PS"	1	1604.59	HEAD "PN" PISTON D15/18 ^E	1
0214.21	BALL BEARING D20X52X15	1	1625.21	OIL PLUG G3/8 "PN"	1
0301.42	SLINGER RING "PN/PK/PKWT/PS" ^D	3	1805.19	ALLEN BOLT M6X22	4
0303.18	NUT "PN/PK/PKWT/PS M8XH5 ^D	3	1805.21	ALLEN BOLT M6X22	8
0517.12	MOTOR FLANGE "PN" HYD	1	1805.39	ALLEN BOLT M6X60	8
0605.09	GASKET D17X23X1.5 (G3/8)	1	6006.25	VALVE ASSY "PN" W/O O-RING ^{A E}	6
0605.33	GASKET D8X14X2 ^D	3	6017.21	COMPLETE MANIFOLD ASSEMBLY	1
0635.03	HIGH PRESS. SEAL ASSY D15 ^{B E}	3	6061.01	KIT 1 - VALVE KIT "PN/PW"	1
1101.66	O-RING - BEARING COVER	1	6061.08	KIT 8 - WATER SEAL KIT D18 "PN"	1
1101.76	O-RING - OIL PLUG	1	6061.14	KIT 14 - BRASS RING KIT D18 "PN"	1
1101.A2	O-RING - VALVE CAP ^{A E}	6	6061.20	Kit 20 - PLUNGER KIT D15/18 "PN"	1
1101.A3	O-RING - VALVE ^{A E}	6			
1101.A4	O-RING - PLUNGER ^D	3			
1101.A7	O-RING - LP SEAL RETAINER ^{B C E}	3			
1101.K8	O-RING - BACK COVER	1			

^A Parts in 6061.01 (Kit 1)
^B Parts in 6061.04 (Kit 8)
^C Parts in 6061.14 (Kit 14)
^D Parts in 6061.20 (Kit 20)
^E Parts in 6017.21 (Complete Manifold Assembly)

*Dimensional Drawings are
Shown in Millimeters.
To Convert to Inches,
Multiply Dimension x 0.03937*

PN SERIES PUMPS - HYDRAULIC MOTOR FLANGE



TORQUE SPECS

Ref.	Description	Ft./lb.	Nm	Loctite®
1	Head Bolts	8	11	-
2	Valve Caps	75	100	243
3	Inlet Cap	60	80	-
4	Outlet Cap	60	80	243
5	Bearing Flange Bolts	8	11	-
6	Rear Cover Bolts	8	11	-
7	Connecting Rod Bolts	-	-	-
8	Plunger Bolts	11	15	270
9	Valve Cover Bolts	-	-	-
10	Oil Drain Plug	6	8	-

