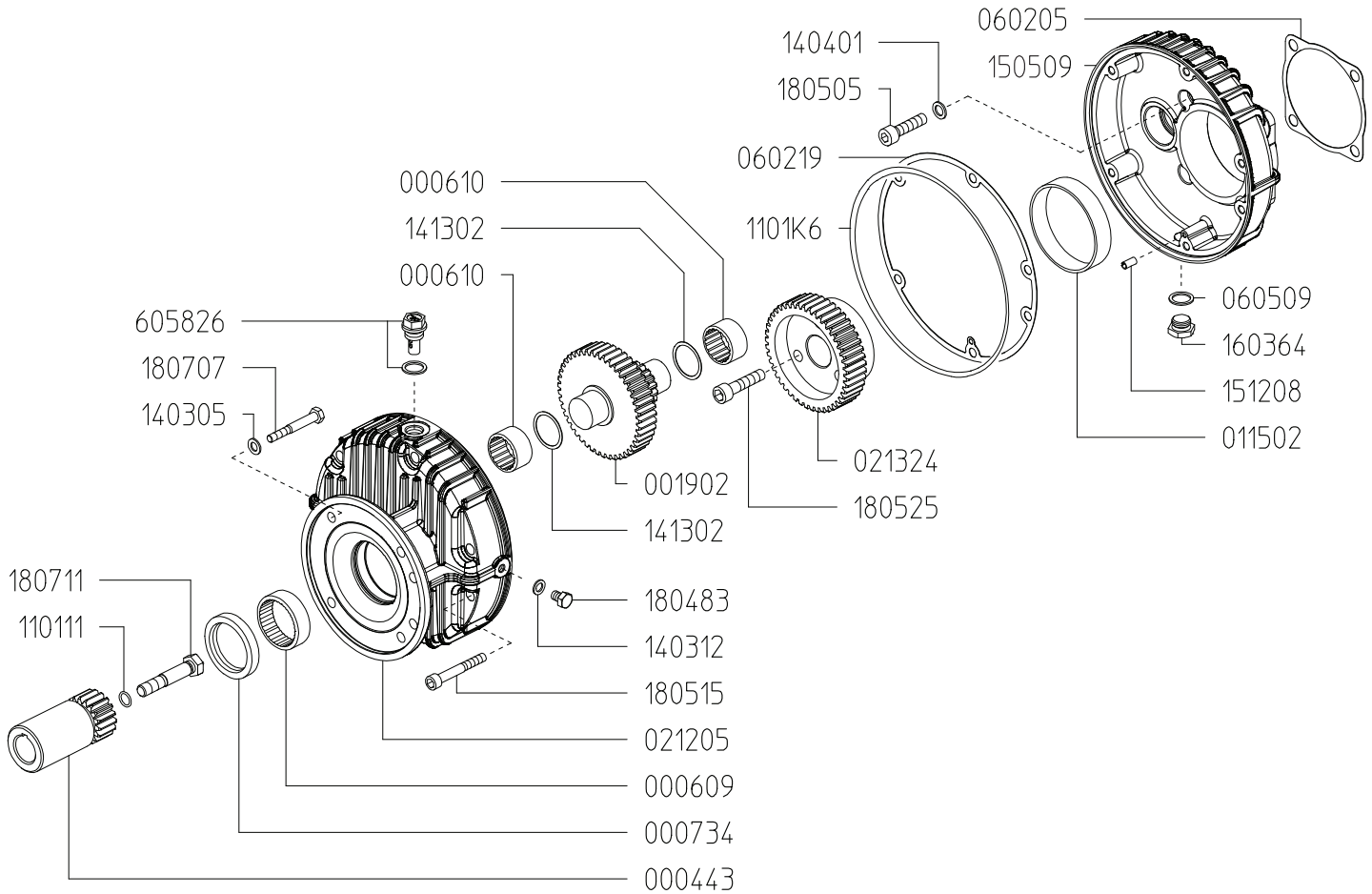


**6.25:1 GAS ENGINE GEAR REDUCTION FOR
DELTA 170 DIAPHRAGM PUMPS
on GAS ENGINES with 1-1/8" SHAFTS
REQUIRES 28 OZ. 90W GEAR LUBE**



Revised 2-5-2025

Part #	Description	Qty	Part #	Description	Qty
0004.43	GEAR SHAFT "S162-1-1/8" - VA"	1	1403.05	WASHER D8.4	4
0006.09	BUSHING D45	1	1403.12	GASKET D8.5	1
0006.10	BUSHING D30	2	1413.02	WASHER D30	2
0007.34	OIL SEAT D45	1	1505.09	GEAR BODY "S162"	1
0019.02	GEAR SHAFT "S162"	1	1512.08	PIN - D4X16	1
0115.02	BUSHING D80 GLY	1	1603.64	PLUG G3/8	1
0212.05	REDUCER COVER "S162"	1	1804.83	HEX BOLT M8X12	1
0213.24	RED.GEAR WHEEL Z=45 "S162-VA"	1	1805.05	ALLEN BOLT M10X30	4
0602.05	GASKET	1	1805.15	ALLEN BOLT M8X60	6
0602.19	GASKET "S162"	1	1805.25	ALLEN BOLT M10X45	3
0605.09	GASKET D17	1	1807.07	HEX BOLT 5/16X1" UNF	4
0605.41	GASKET D10	4	1807.11	HEX BOLT 7/16"X2" UNF	1
1101.11	O-RING - GEAR SHAFT	1	6058.26	OIL PLUG G3/8	1
1101.K6	O-RING - COVER/BODY	1			