

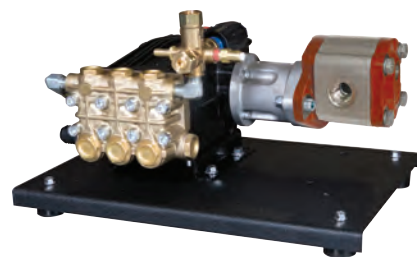
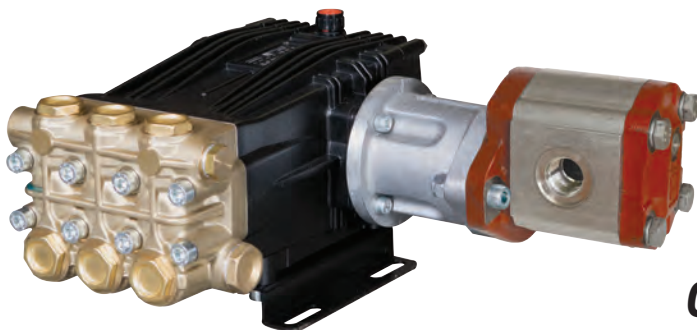
B Series Hydraulic Drive Pumps Pump, Hydraulic Motor, Mounting Rails

	Model	GPM	l/min	PSI	bar	Hydraulic Requirements	Weight
1750 RPM	BD 4.0/30 SH	4.0	15	3000	200	12.0 GPM @ 1500 PSI	36 lbs
	BD 5.0/25 SH	5.0	19	2500	170	12.0 GPM @ 1500 PSI	36 lbs
1750 RPM	BD ___/___ SHK	B Series Hydraulic Drive Plunger Pump with hydraulic gear motor, mounting rails, unloader, 1" hose barb inlet, thermal relief valve, safety pop-off valve and 14" x 20" base with rubber bumpers.					65 lbs



BK Series Hydraulic Drive Pumps Pump, Hydraulic Motor, Mounting Rails

	Model	GPM	l/min	PSI	bar	Hydraulic Requirements	Weight
1750 RPM	BKD 4.0/40 SH	4.0	15	4000	270	12.0 GPM @ 2000 PSI	39 lbs
	BKD 5.0/36 SH	5.0	19	3500	240	12.0 GPM @ 2000 PSI	39 lbs
1750 RPM	BKD ___/___ SHK	BK Series Hydraulic Drive Plunger Pump with hydraulic gear motor, mounting rails, unloader, 1" hose barb inlet, thermal relief valve, safety pop-off valve and 14" x 20" base with rubber bumpers.					70 lbs



C Series Hydraulic Drive Pumps Pump, Hydraulic Motor, Mounting Rails

	Model	GPM	l/min	PSI	bar	Hydraulic Requirements	Weight
1750 RPM	CD 5.5/30 SH	5.5	21	3000	200	12.0 GPM @ 1700 PSI	48 lbs
	CD 7.0/22 SH	7.0	26	2200	150	12.0 GPM @ 2000 PSI	48 lbs
	CD 8.5/20 SH	8.5	32	2000	130	12.0 GPM @ 2000 PSI	48 lbs
1750 RPM	CD 5.5/30 SHK	C Series Hydraulic Drive Plunger Pump with hydraulic gear motor, mounting rails, unloader, 1" hose barb inlet, thermal relief valve, safety pop-off valve and 14" x 20" base with rubber bumpers.					80 lbs

HYDRAULIC DRIVE PUMPS



CK Series Hydraulic Drive Pumps Pump, Hydraulic Motor, Mounting Rails

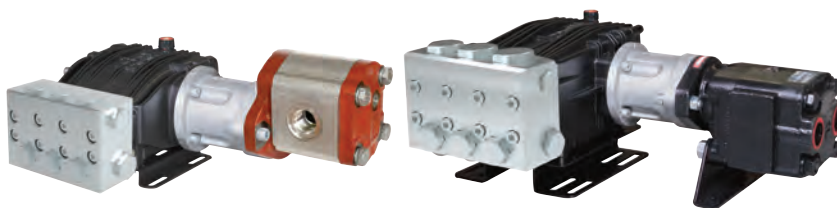
	Model	GPM	l/min	PSI*	bar*	Hydraulic Requirements	Weight
1450 RPM	CKC 17/30 SH	4.5	17.0	4000	275	20.0 GPM @ 2000 PSI	75 lbs
	CKC 17/36 SH	4.5	17.0	5000	350	20.0 GPM @ 2200 PSI	75 lbs
	CKC 21/30 SH	5.5	21.0	4000	275	20.0 GPM @ 2400 PSI	75 lbs
	CKC 21/36 SH	5.5	21.0	5000	350	20.0 GPM @ 2400 PSI	75 lbs
	CKC 26/30 SH	6.9	26.0	4000	275	20.0 GPM @ 2400 PSI	75 lbs
	CKC 30/24 SH	7.9	30.0	3500	240	20.0 GPM @ 2400 PSI	75 lbs
	CKC 34/25 SH	9.0	34.0	3200	220	20.0 GPM @ 2400 PSI	75 lbs
	CKC 38/20 SH	10.0	38.0	3000	200	20.0 GPM @ 2400 PSI	75 lbs
	CKC 42/20 SH	11.6	44.0	2500	175	20.0 GPM @ 2400 PSI	75 lbs
	CKC 50/20 SH	13.2	50.0	2000	140	20.0 GPM @ 2400 PSI	75 lbs
1450 RPM	CKC ___/___ SHK	CK Series Hydraulic Drive Plunger Pump with hydraulic gear motor, mounting rails, unloader, (2) 1" hose barb inlets, thermal relief valve, safety pop-off valve and 14" x 20" base with rubber bumpers.					100 lbs

* NOTE: Pressure ratings are based on maximum hydraulic motor output capacity



GAMMA Series Hydraulic Drive Pumps Pump, Hydraulic Motor, Mounting Rails

	Model	GPM	l/min	PSI	bar	Hydraulic Requirements	Weight
600 RPM	GAMMA-62/CC-HYD	17.0	64	850	60	14.0 GPM @ 1400 PSI	75 lbs
	GAMMA-105/CC-HYD	28.0	106	850	60	14.0 GPM @ 1800 PSI	100 lbs



Stainless Steel Aggressive Environment Hydraulic Drive Pumps Pump, Hydraulic Motor, Mounting Rails

	Model	GPM	l/min	PSI	bar	Hydraulic Requirements	Weight
1450 RPM	BSC 15/20 SH	4.0	15.0	2900	200	10.0 GPM @ 1700 PSI	39 lbs
	BSC 18/20 SH	4.9	18.5	2900	200	10.0 GPM @ 1900 PSI	39 lbs
	BSC 21/20 SH	5.5	21.0	2900	200	10.0 GPM @ 1900 PSI	39 lbs
	CSC 27/20 SH	7.0	27	3000	200	20.0 GPM @ 2000 PSI	80 lbs
	CSC 34/20 SH	9.0	34	3000	200	20.0 GPM @ 2000 PSI	80 lbs
	CSC 42/17 SH	11.5	42	2500	170	20.0 GPM @ 2200 PSI	80 lbs
	CSC 50/15 SH	13.0	50	2200	150	20.0 GPM @ 2200 PSI	80 lbs