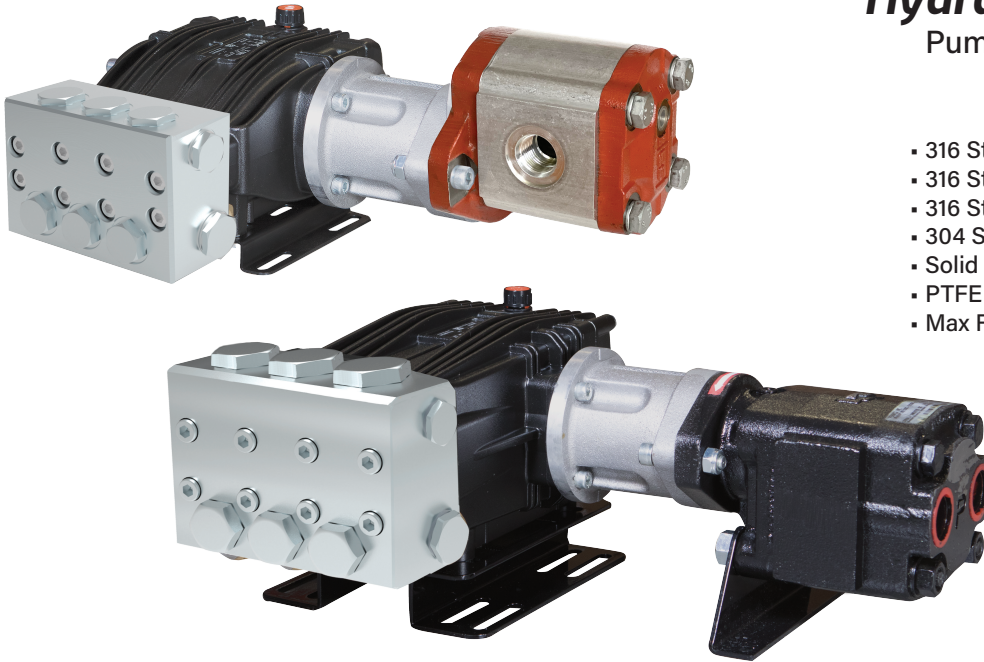


STAINLESS STEEL

Hydraulic Drive Assemblies

Pump, Hydraulic Motor, Mounting Rails
1450 RPM

- 316 Stainless Steel Manifolds
- 316 Stainless Steel Valves
- 316 Stainless Steel Plunger Rods & Nuts
- 304 Stainless Steel Exterior Bolts
- Solid Ceramic Plungers
- PTFE Style Packings
- Max Fluid Temp, 160°F



Stainless Steel Hydraulic Drive Assemblies

Stainless steel hydraulic drive plunger pump assemblies include models with flow rates from 4.0 to 5.0 GPM and pressures up to 2900 PSI.

Applications include general pressure cleaning, sewer jetting, vehicle wash equipment and aggressive environment applications.

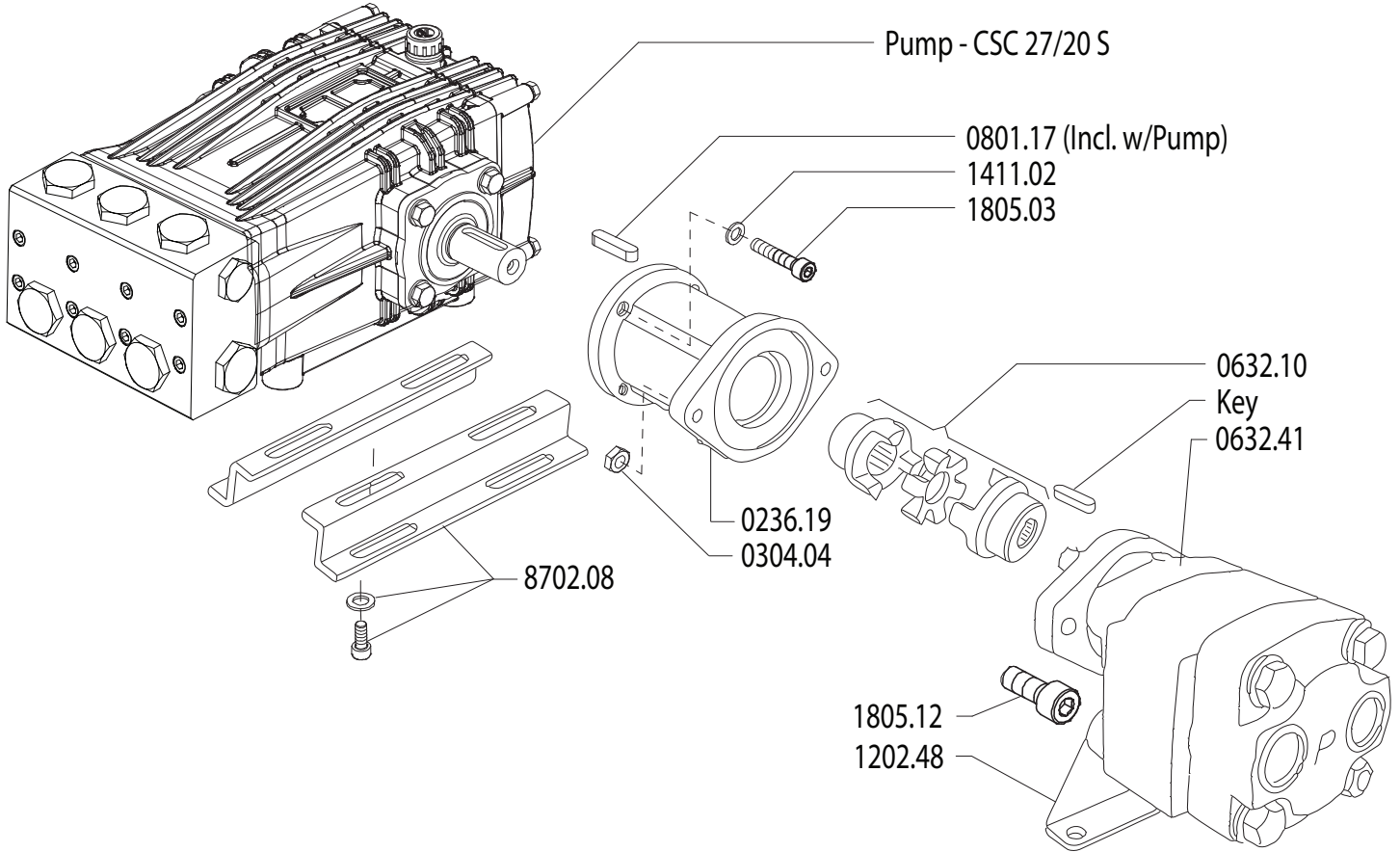
	Model	GPM	l/min	PSI	bar	Hydraulic Requirements	Weight
1450 RPM	BSC 15/20 SH	4.0	15.0	2900	200	10.0 GPM @ 1700 PSI	39 lbs
	BSC 18/20 SH	4.9	18.5	2900	200	10.0 GPM @ 1900 PSI	39 lbs
	BSC 21/20 SH	5.5	21.0	2900	200	10.0 GPM @ 1900 PSI	39 lbs
	CSC 27/20 SH	7.0	27	3000	200	20.0 GPM @ 2000 PSI	80 lbs
	CSC 34/20 SH	9.0	34	3000	200	20.0 GPM @ 2000 PSI	80 lbs
	CSC 42/17 SH	11.5	42	2500	170	20.0 GPM @ 2200 PSI	80 lbs
	CSC 50/15 SH	13.0	50	2200	150	20.0 GPM @ 2200 PSI	80 lbs



Hydraulic Drive Assembly **CSC 27/20 SH**

MAX OUTPUT
 MAX OUTPUT
 RATED PUMP SPEED
 HYDRAULIC REQUIREMENT
 LUBRICATION

7.1 GPM / 27 L/MIN
 3000 PSI / 200 BAR
 1450 RPM
 20.0 GPM / 2000 PSI
 34.5 OZ UDOR LUBE



Revised 1-20-2025

Part #	Description	Qty
0236.19	ADAPTER HYDRAULIC MOTOR	1
0304.04	NUT - M10	2
0632.10	COUPLER 24MMX3/4	1
0632.41	HYDRAULIC MOTOR CK	1
1411.02	WASHER - D8	4

Part #	Description	Qty
1411.03	WASHER - D10	2
1805.03	ALLEN BOLT M8X30	4
1805.12	ALLEN BOLT M10X500	2
8702.10	RAIL KIT WITH BOLTS/WASHERS	1

MAX OUTPUT
MAX OUTPUT
RATED PUMP SPEED
POWER REQUIREMENT
LUBRICATION

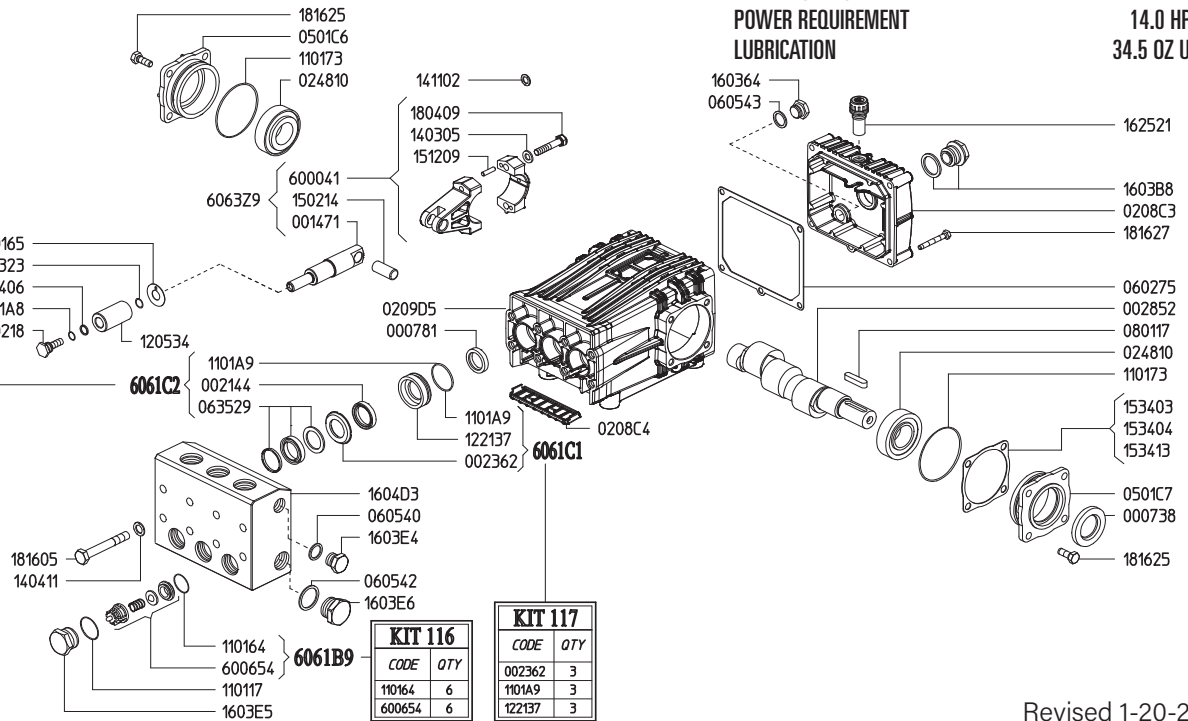
7.1 GPM / 27 L/MIN
3000 PSI / 200 BAR
1450 RPM
14.0 HP ELECTRIC
34.5 OZ UDOR LUBE

KIT 119	
CODE	QTY
002323	3
010218	3
030165	3
1101A8	3
141406	3

KIT 118	
CODE	QTY
002144	3
063529	3
1101A9	3

KIT 116	
CODE	QTY
110164	6
600654	6

KIT 117	
CODE	QTY
002362	3
1101A9	3
122137	3



Revised 1-20-2025

Part #	Description	Qty	Part #	Description	Qty
0007.38	OIL SEAL D30	1	1404.11	GROWER WASHER D10.5 SS	8
0007.81	OIL SEAL D20	3	1411.02	SERATED WASHER D8	6
0014.71	PLUNGER GUIDE D28 "CS"	3	1414.06	WASHER D13.4 SS ^D	3
0021.44	WATER SEAL L.P. D28 BPE ^C	3	1502.14	PIN D14X32	3
0023.23	RING D10.4 ^D	3	1512.09	PLUG D5X20 UNI1707	6
0023.62	UPPER RING D28 "CS" SS ^B	3	1534.03	SHIM 0.1 MM	-
0028.52	MALE SHAFT D24	1	1534.04	SHIM 0.2 MM	-
0102.18	PLUNGER BOLT SS ^D	3	1534.13	SHIM 0.05 MM	-
0208.C3	BACK COVER "C/CK"	1	1603.64	PLUG G3/8	1
0208.C4	COVER "C/CK"	1	1603.B8	OIL PLUG G3/4 + GASKET	1
0209.D5	CRANKCASE "C/CK/CH/CS"	1	1603.E4	PLUG G1/2 SS	1
0248.10	ROLLER BEARING D30	2	1603.E5	VALVE PLUG "CS" PISTON D28 SS	6
0301.65	DISC "CS" SS ^D	3	1603.E6	PLUG G3/4 SS	1
0501.C6	BEARING CLOSED FLANGE	1	1604.D3	HEAD "CS" PISTON D28 SS	1
0501.C7	BEARING HOLLOW FLANGE	1	1625.05	OIL PLUG G3/8	1
0602.75	BACK COVER GASKET	1	1804.09	HEX BOLT M8X40	6
0605.40	GASKET D21.5	1	1816.05	HEX BOLT M10X90 SS	8
0605.42	GASKET D27	1	1816.25	HEX BOLT M8X20 SS	8
0605.43	GASKET D17	1	1816.27	HEX BOLT M6X45 SS	5
0635.29	HIGH PRESS. SEAL KIT D28 ^C	3	6000.41	ROD ASSEMBLY	3
0801.17	KEY A8X7X35 UNI6604	1	6006.54	VALVE ASSY "CS" W/O O-RING ^A	6
1101.17	O-RING - VALVE CAP	6	6061.B9	VALVE KIT "CS" (KIT 116)	1
1101.64	O-RING - VALVE ^A	6	6061.C1	SS RING KIT D28 "CS" (KIT 117)	1
1101.73	O-RING - BEARING FLANGE	2	6061.C2	WATER SEAL KIT D28 (KIT 118)	1
1101.A8	O-RING - PLUNGER BOLT ^D	3	6061.C3	PLUNGER KIT D28 "CS" (KIT 119)	1
1101.A9	O-RING - WATER SEAL ^{B,C}	3			
1205.34	CERAMIC PLUNGER D28	3			
1221.37	PRESSURE RING D28 "CS" SS ^B	3			
1403.05	WASHER D8.4	6			

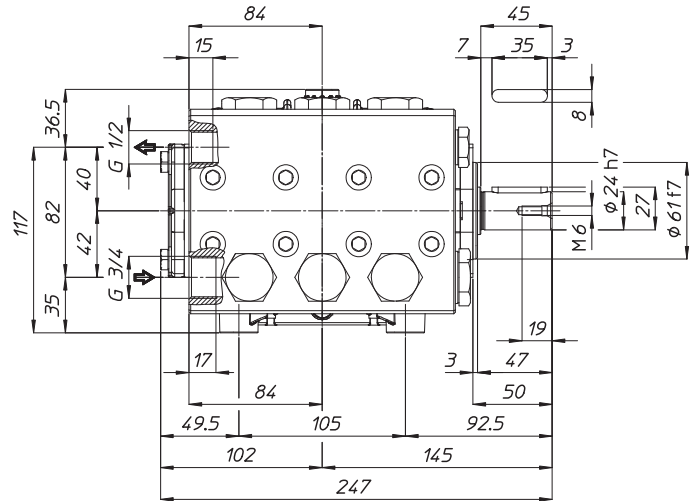
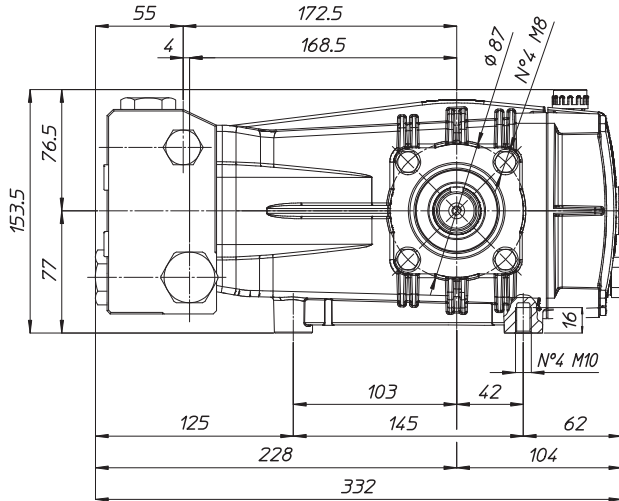
^A Parts in 6061.B9 (Kit 116).
^B Parts in 6061.C1 (Kit 117).
^C Parts in 6061.C2 (Kit 118).
^D Parts in 6061.C3 (Kit 119).

WEIGHT
LUBRICATION

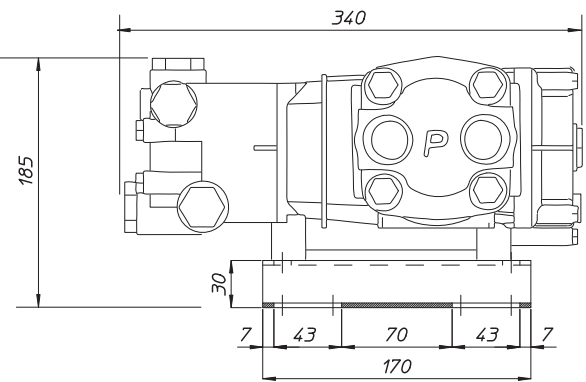
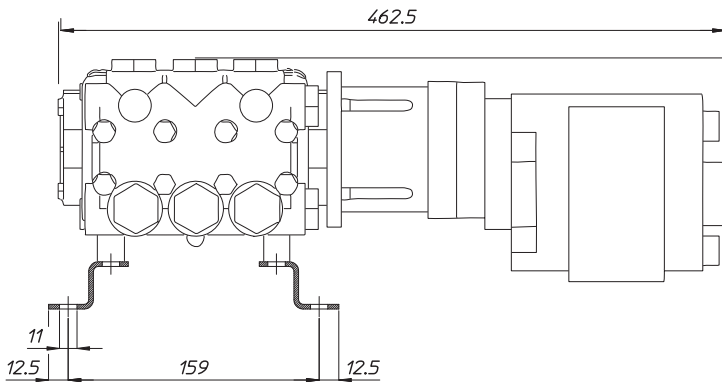
39 LBS
34.5 OZ UDOR LUBE

CS SERIES PUMPS BELOW 10 GPM

*Dimensional Drawings are
Shown in Millimeters.
To Convert to Inches,
Multiply Dimension x 0.03937*



CS SERIES HYDRAULIC DRIVE ASSEMBLIES



TORQUE SPECS

Ref.	Description	Ft./lb.	Nm	Loctite®
1	Head Bolts	37	50	-
2	Valve Caps	103	140	243
3	Inlet Cap	103	140	-
4	Outlet Cap	103	140	243
5	Bearing Flange Bolts	19	25	-
6	Rear Cover Bolts	8	11	-
7	Connecting Rod Bolts	19	25	270
8	Plunger Bolts	15	20	270
9	Valve Cover Bolts	-	-	-
10	Oil Drain Plug	8	11	-

