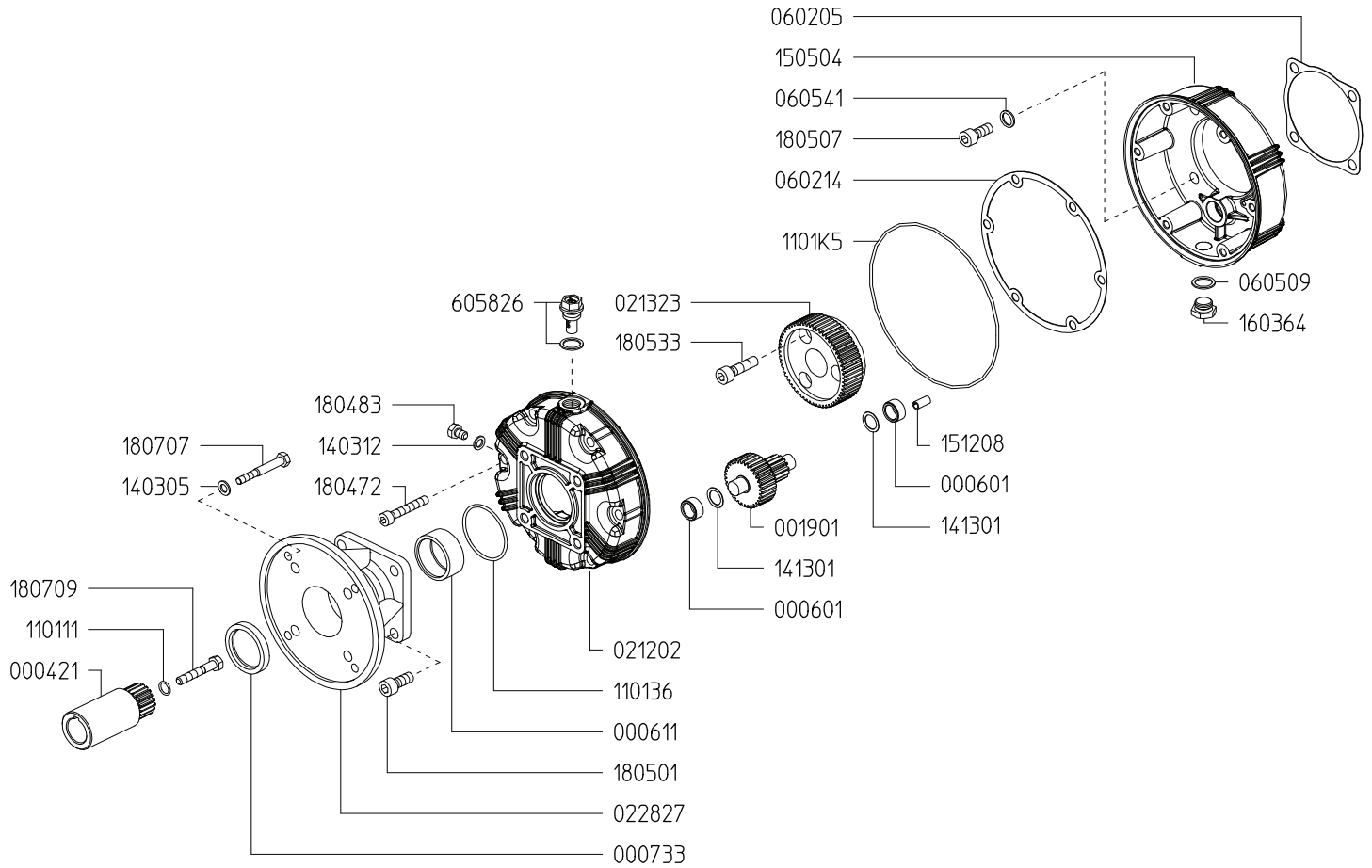


**GAS ENGINE GEAR REDUCTION FOR
KAPPA-55/75, DELTA-75, ZETA-120 DIAPHRAGM PUMPS
on GAS ENGINES with 1" SHAFTS
REQUIRES 17.25 OZ. 90W GEAR LUBE**



Revised 3-8-2023

Part #	Description	Qty	Part #	Description	Qty
0004.21	GEAR SHAFT "S164-1"	1	1403.05	WASHER D8.4	4
0006.01	BUSHING D15	2	1403.12	GASKET D8.5	1
0006.11	BUSHING D40	1	1413.01	WASHER D15	2
0007.33	OIL SEAL D40	1	1505.04	GEAR BODY "S164"	1
0019.01	GEAR SHAFT "S164"	1	1512.08	PLUG D4X16	1
0212.02	REDUCER COVER "S164"	1	1603.64	PLUG G3/8	1
0213.23	RED. GEAR WHEEL Z=60 "S164"	1	1804.72	HEX BOLT M8X50	6
0228.27	COUPLER "S164-VA"	1	1804.83	HEX BOLT M8X12	1
0602.05	GASKET	1	1805.01	ALLEN BOLT M10X25	4
0602.14	GASKET "S164"	1	1805.07	ALLEN BOLT M10X40	4
0605.09	GASKET D17	1	1805.33	ALLEN BOLT M10X35	3
0605.41	GASKET D10	4	1807.07	HEX BOLT 5/16X1" UNF	4
1101.11	O-RING - GEAR SHAFT	1	1807.09	HEX BOLT 5/16X2-1/4" UNF	1
1101.36	O-RING - BUSHING	1	6058.26	OIL PLUG G3/8	1
1101.K5	O-RING - GEAR CASE	1			