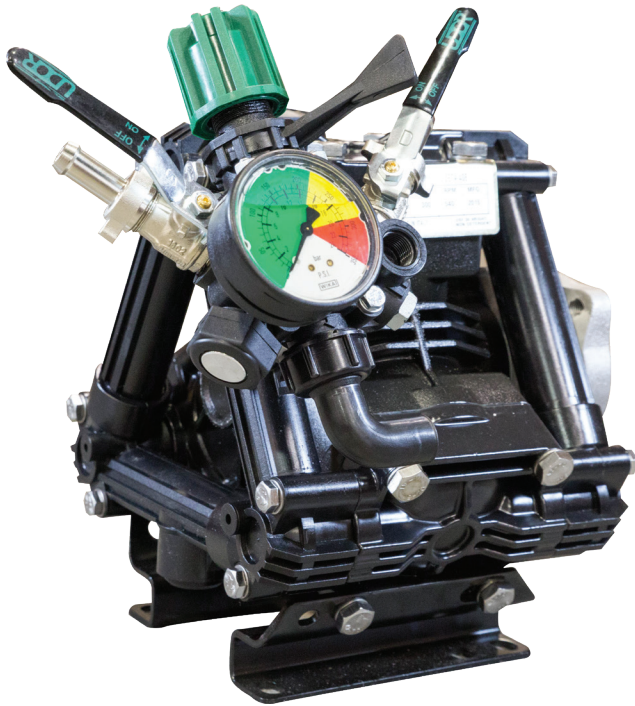


3-Cylinder, Low-Pressure Diaphragm Pumps



ZETA 85 low pressure 3-cylinder diaphragm pumps have anodized aluminum bodies with plasticized aluminum heads, stainless steel valves and glass-filled nylon manifolds. A control valve with pressure gauge is standard on all models.

ZETA pumps are excellent for various horticultural and agricultural spraying applications.

Pumps are available with Universal VA Drive Face or gear reductions for 4 to 6.5 HP gas engines.

Model	GPM	l/min	PSI	bar	RPM	Drive Configuration	Weight
ZETA 85 VA	22.0	85	300	20	550	Universal VA Drive Face.	29 LBS
ZETA 85 VAGR3/4	22.0	85	300	20	550	Gear Reduction for 3/4" Shaft Gas Engine, 4-6.5 HP	36 LBS

Specifications	ZETA 40
Inlet Port	1-1/2" Hose Barb
Outlet Ports - Valve	(2) 1/2" Hose Barb
Bypass	3/4" Hose Barb
Piston Diameter	60.0mm
Crankshaft Stroke/Code	18.0mm / A
Dims. - Pump Only	11"L x 11"W x 12"H
- GR Version	16"L x 11"W x 12"H

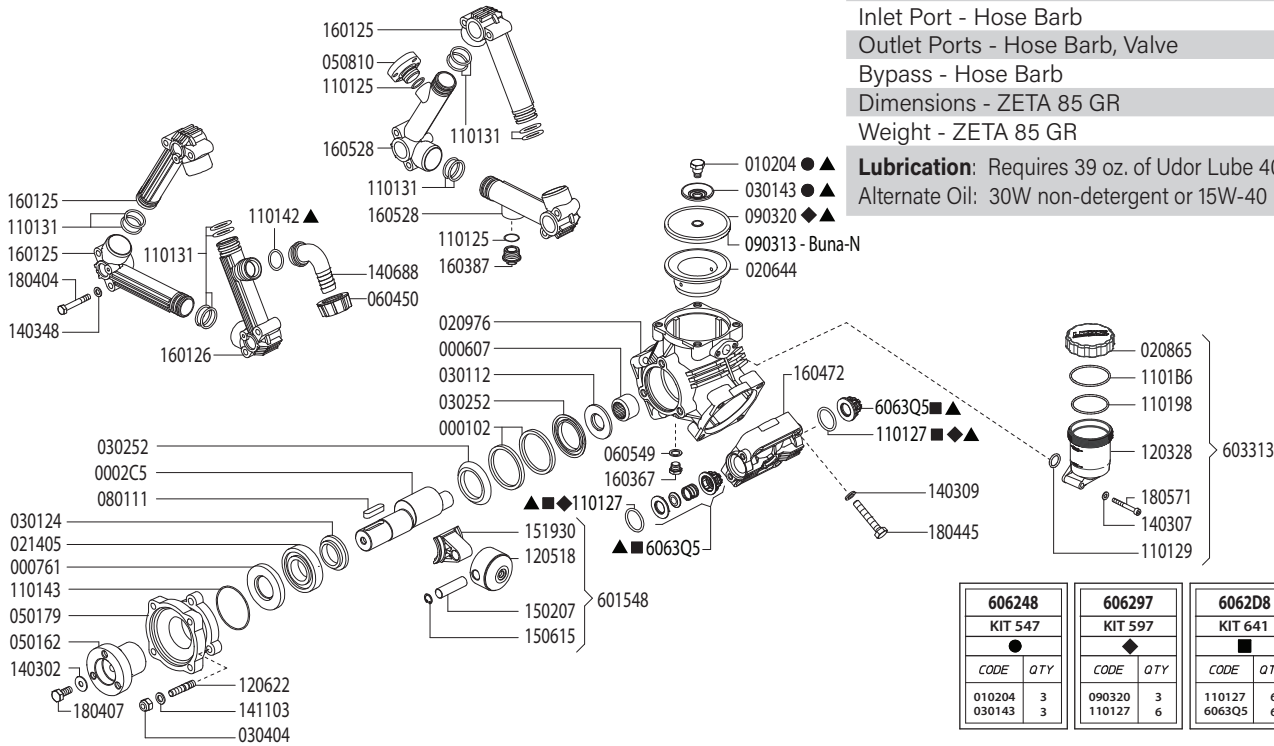
Description	Part #
Diaphragm Kit - GREENTECH	6062.97
Diaphragm Bolt & Washer Kit	6062.48
Valve Kit	6062.D8
Regulator Repair Kit	6062.A9
Complete Repair Kit	8700.60CK

Lubrication: Requires 39 oz. of Udor Lube 40W Premium Pump Oil.
Alternate Oil: 30W non-detergent or 15W-40 non-detergent oil.



Maximum Flow	22 GPM / 85 lpm
Maximum Pressure	300 PSI / 20 bar
Maximum RPM	550 RPM
Inlet Port - Hose Barb	1-1/2" HB
Outlet Ports - Hose Barb, Valve	(2) 1/2" HB
Bypass - Hose Barb	3/4" HB
Dimensions - ZETA 85 GR	16"L x 11"W x 12"H
Weight - ZETA 85 GR	36 lbs

Lubrication: Requires 39 oz. of Udor Lube 40W Premium Pump Oil.
 Alternate Oil: 30W non-detergent or 15W-40 non-detergent oil.



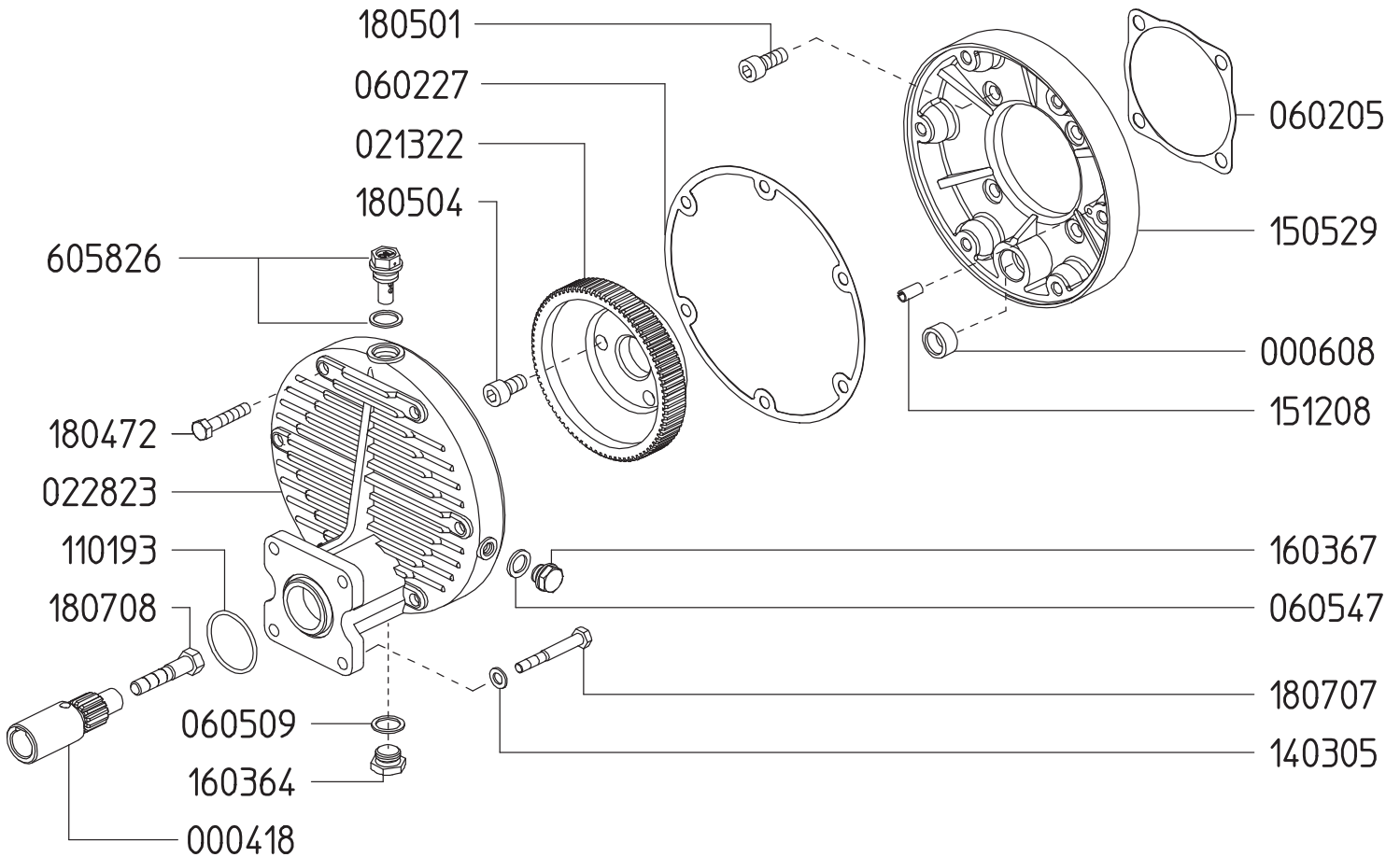
606248 KIT 547		606297 KIT 597		6062D8 KIT 641		8700.60CK	
CODE	QTY	CODE	QTY	CODE	QTY	CODE	QTY
010204	3	090320	3	110127	6	010204	3
030143	3	110127	6	6063Q5	6	030143	3
						090320	3
						110127	6
						110142	1
						6063Q5	6

Revised 8-29-2024

Part #	Description	Qty	Part #	Description	Qty
0001.02	RETAINER RING	2	1206.22	STUD M10X46	3
0002.C5	CRANKSHAFT	1	1403.02	WASHER M10	3
0006.07	BEARING D25	1	1403.07	WASHER M8	2
0007.61	OIL SEAL D35	1	1403.09	WASHER M10	12
0102.04	DIAPHRAGM BOLT ●▲	3	1403.48	WASHER M8	12
0206.44	PISTON SLEEVE D60	3	1406.88	SUCTION HOSE BARB 1-1/2"	1
0208.65	OIL RESERVIOR CAP	1	1411.03	SERATED WASHER M10	3
0209.76	CRANKCASE	1	1502.07	CONNECTING ROD PIN 15X54	3
0214.05	BALL BEARING D35	1	1506.15	SNAP RING D15	3
0301.12	BEARING DISC D25	1	1519.30	CONNECTING ROD	3
0301.24	BEARING DISC D35	1	1601.25	INLET/OUTLET MANIFOLD TUBE	3
0301.43	DIAPHRAGM WASHER ●▲	3	1601.26	SUCTION MANIFOLD TUBE G1-1/2" M	1
0302.52	ROD SPACER	2	1603.67	OIL PLUG G1/4"	1
0304.04	NY-LOCK NUT M10	3	1603.87	MANIFOLD PLUG G3/4"	2
0501.62	ADAPTER - VA	1	1604.72	HEAD	3
0501.79	FLANGE - VA	1	1605.28	DISCHARGE MANIFOLD TUBE G3/4" F	2
0508.10	REGULATOR MOUNTING ADAPTER	1	1804.04	HEX BOLT M8X55	12
0604.50	BARB NUT G1-1/2"	1	1804.07	HEX BOLT M10X25	1
0605.49	OIL PLUG GASKET	1	1804.45	HEX BOLT M10X60	12
0801.11	KEY 10X8X40	1	1805.71	ALLEN BOLT M6X50	2
0903.20	PISTON DIAPHRAGM 100mm,BUNA-N	3	6015.48	PISTON / ROD ASSEMBLY D60	3
0903.20	PISTON DIAPHRAGM 100mm,GREENTECH ◆▲	3	6033.13	OIL RESERVIOR ASSEMBLY	1
1101.25	O-RING - PLUG & ADAPTER	2	6063.Q5	VALVE ASSEMBLY W/O O-RING ■▲	6
1101.27	O-RING - VALVE ◆■▲	6	6062.48	DIAPHRAGM WASHER/BOLT (KIT 547)	1
1101.29	O-RING - OIL RESERVIOR	1	6062.97	DIAPHRAGM KIT - GREENTECH (KIT 597)	1
1101.31	O-RING - MANIFOLD	12	6062.D8	INLET/OUTLET VALVE KIT (KIT 641)	1
1101.42	O-RING - INLET BARB▲	1	8700.60CK	COMPLETE REPAIR KIT	1
1101.43	O-RING - FLANGE	1			
1101.98	O-RING - OIL RESERVIOR	1			
1101.B6	O-RING - OIL RESERVIOR	1			
1203.28	OIL RESERVIOR	1			
1205.18	ALUMINUM PISTON D60	3			

- Parts in 6062.48 (Kit 547)
- ◆ Parts in 6062.97 (Kit 597).
- Parts in 6062.D8 (Kit 641).
- ▲ Parts in 8700.60CK

**GAS ENGINE GEAR REDUCTION FOR
KAPPA-55, ZETA-40/85/120 DIAPHRAGM PUMPS
on GAS ENGINES with 3/4" SHAFTS
REQUIRES 16 OZ. 90W GEAR LUBE**

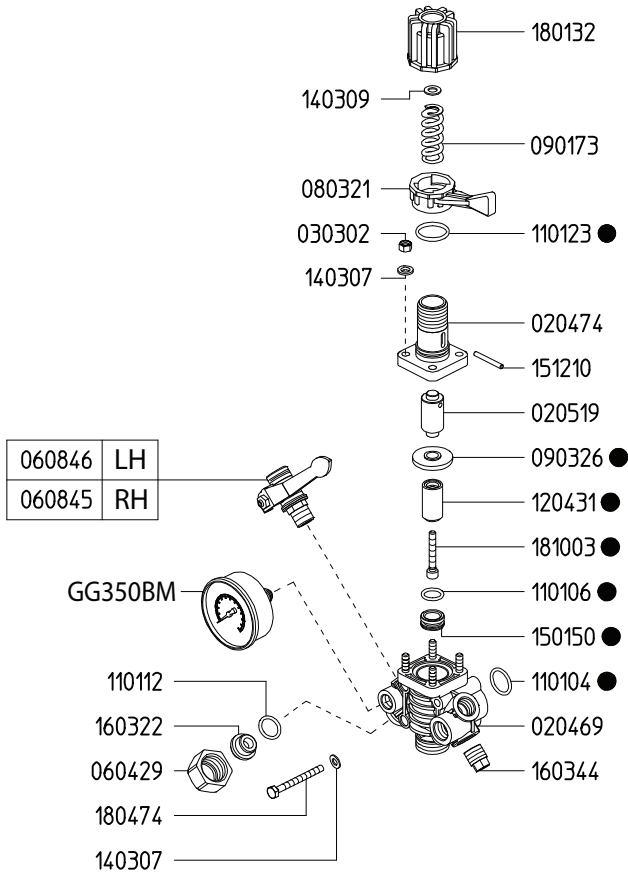


Revised 8-29-2024

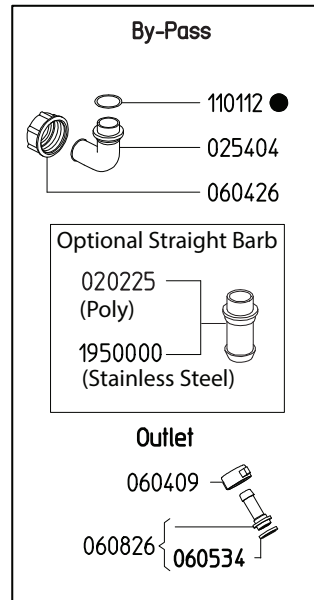
Part #	Description	Qty	Part #	Description	Qty
0004.18	GEAR SHAFT - 3/4"	1	1505.29	GEAR CASE - PUMP	1
0006.08	BEARING	1	1512.08	ALIGNMENT PIN	1
0213.22	PUMP GEAR - VA	1	1603.64	OIL PLUG G3/8	1
0228.23	GEAR CASE - ENGINE	1	1603.67	OIL PLUG G1/4	1
0602.05	GASKET	1	1804.72	HEX BOLT M8X50	6
0602.27	GASKET	1	1805.01	ALLEN BOLT M10X25	4
0605.09	GASKET - ALUMINUM	1	1805.04	ALLEN BOLT M10X20	3
0605.47	GASKET - ALUMINUM	1	1807.07	HEX BOLT 5/16 X 1"	4
1101.93	O-RING	1	1807.08	HEX BOLT 5/16 X 2-1/4"	1
1403.05	WASHER	4	6058.26	VENTED OIL CAP	1

Adjustable Pressure Regulator

Maximum Flow	27.0 GPM / 102 lpm
Maximum Pressure	350 PSI / 24 bar
Inlet Port - Hose Barb	-
Outlet Ports - Hose Barb, Valve	(2) 1/2" HB
Bypass - Hose Barb	3/4" HB



060846	LH
060845	RH



6062A9	
KIT 608	
CODE	QTY
090326	1
110104	1
110106	1
110112	1
110123	1
120431	1
150150	1
181003	1

Revised 8-29-2024

Part #	Description	Qty
0202.25	BYPASS HOSE BARB - STRAIGHT (OPTIONAL)	1
0204.69	BODY	1
0204.70	BODY	1
0205.19	CYLINDER	1
0254.04	BYPASS HOSE BARB - ELBOW	1
0303.02	NUT	4
0604.09	BARB NUT	2
0604.26	BYPASS BARB NUT	1
0604.29	NUT	1
0605.34	GASKET	2
0608.26	1/2" HOSE BARB W/GASKET	2
0608.45	BALL VALVE - RIGHT	1
0608.46	BALL VALVE - LEFT	1
0803.21	LEVER	1
0901.73	SPRING (LP 300 PSI)	1
0903.26	DIAPHRAGM ●	1
1101.04	O-RING ●	1

Part #	Description	Qty
1101.06	O-RING ●	1
1101.12	O-RING ●	2
1101.23	O-RING ●	1
1204.31	POPPET ●	1
1403.07	WASHER	6
1501.50	SEAT ●	1
1512.10	PIN	1
1603.22	PLUG	1
1603.44	PLUG	1
1801.32	ADJUSTMENT KNOB	1
1804.74	BOLT	2
1810.03	STAINLESS STEEL BOLT ●	1
19500.00	BYPASS HOSE BARB - STRAIGHT, SS (OPTIONAL)	1
6062.A9	REPAIR KIT FOR 6010.9X CONTROL UNIT (KIT 608)	1
GG350BM	PRESSURE GAUGE - 350 PSI BACK MOUNT	1

● Parts Included in Repair Kit #6062.A9 (KIT 608)

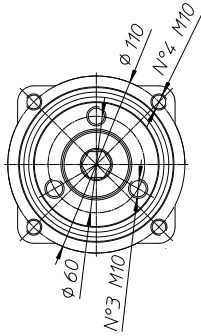
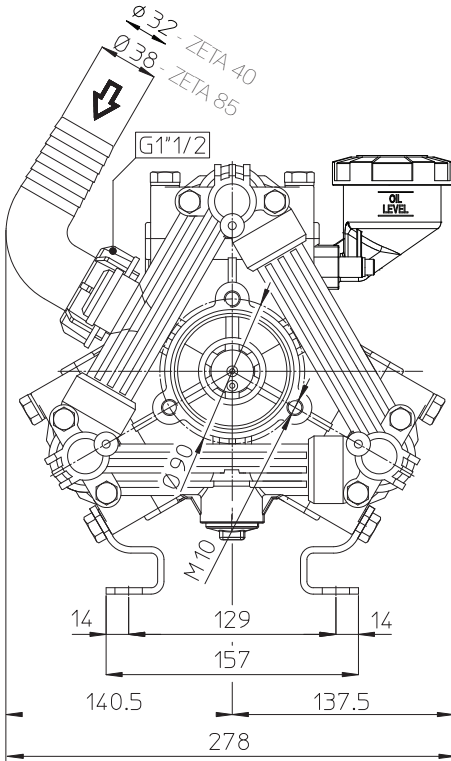
The control unit features a manual dump valve, pressure control knob, glycerine filled pressure gauge, and two ball valve discharge ports.

1. Before operating or re-operating the pump move lever (0803.21) to the dump position (Right) so the pump will start at zero pressure. (Failure to do so will void the pump warranty.)
2. Turn pressure adjustment knob (1801.32) counter clockwise to relieve spring tension. This step only applies to the initial start up and is not necessary in daily operation of pump.
3. Start unit and let run until air is evacuated from the system.
4. Move lever (0803.21) to the pressure position (Left) open spray gun or spray boom and turn the pressure adjustment knob (1801.32) clockwise until desired operating pressure is achieved.

ZETA 40/85 DIMENSIONS

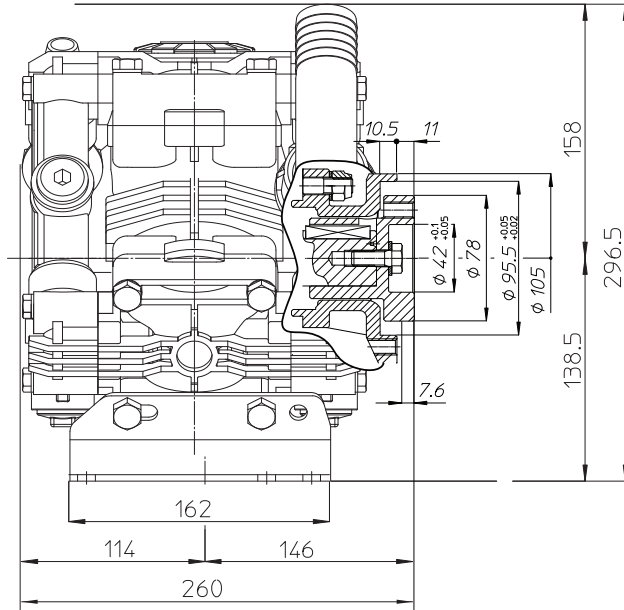
All Dimensions are WITHOUT Control Unit or Regulator

Dimensional Drawings are Shown in Millimeters. To Convert to Inches, Multiply Dimension x 0.03937



Specifications	ZETA 40	ZETA 85
Inlet Port - Hose Barb	1" HB	1-1/2" HB
Outlet Ports - Hose Barb, Valve	(2) 1/2" HB	(2) 1/2" HB
Bypass - Hose Barb	3/4" HB	3/4" HB
Dimensions - Pump Only		11"L x 11"W x 12"H
- GR Version		16"L x 11"W x 12"H
Diaphragm Material	GREENTECH (Std) Buna-N (Opt)	

Lubrication: Requires 39 oz. of Udor Lube 40W Premium Pump Oil. Alternate Oil: 30W non-detergent or 15W-40 non-detergent oil.



VA Universal Drive Face Detail

Dimensional Drawings are Shown in Millimeters. To Convert to Inches, Multiply Dimension x 0.03937

TORQUE SPECS

Ref.	Description	Ft./lb.	Nm
1	Diaphragm Bolts (Use Loctite 243)	18	25
2	Head Bolts	30	40
3	Pulsation Dampener Bolts	18	25
4	Oil Cup Bolts	6	8
5	Manifold Bolts (Plastic)	14	20

