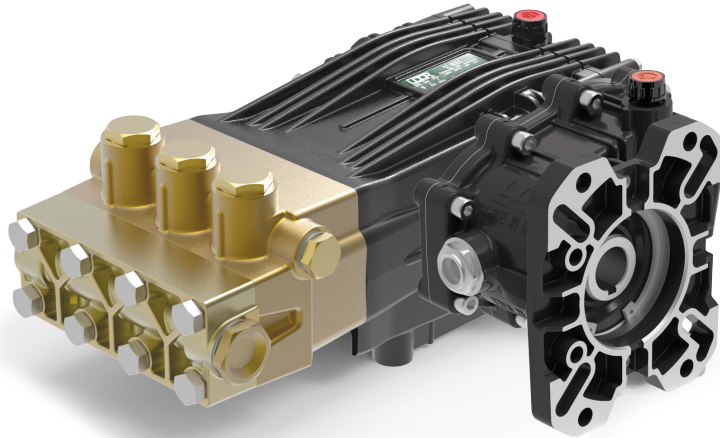


## Gear Reduction, Gas Engine Models

1" or 1-1/8" Hollow Shaft, SAE J609-B Flange.  
2.2:1 Gear Reduction Drive



- Solid Ceramic Plungers
- Stainless Steel Check Valves
- Heavy Duty Brass Manifold
- Heavy Duty Bronze Connecting Rods
- Deeper Back Cover for Increased Oil Capacity
- 34.5 oz. Capacity Vented Oil Bath Crank Case
- 3/4" BSP-F Inlet. 3/8" BSP-F Outlet
- Max Fluid Temp, 160°F

### CXC Series Gas Engine, Gear Reduction Drive Plunger Pumps

CXC Series super duty plunger pumps include a wide range of models with flow rates from 4.0 to 5.8 GPM and pressures up to 7250 PSI.

Other drive options include a 24mm solid, keyed shaft.

Applications include general pressure cleaning,, construction, hydro-excavation and oil field applications.

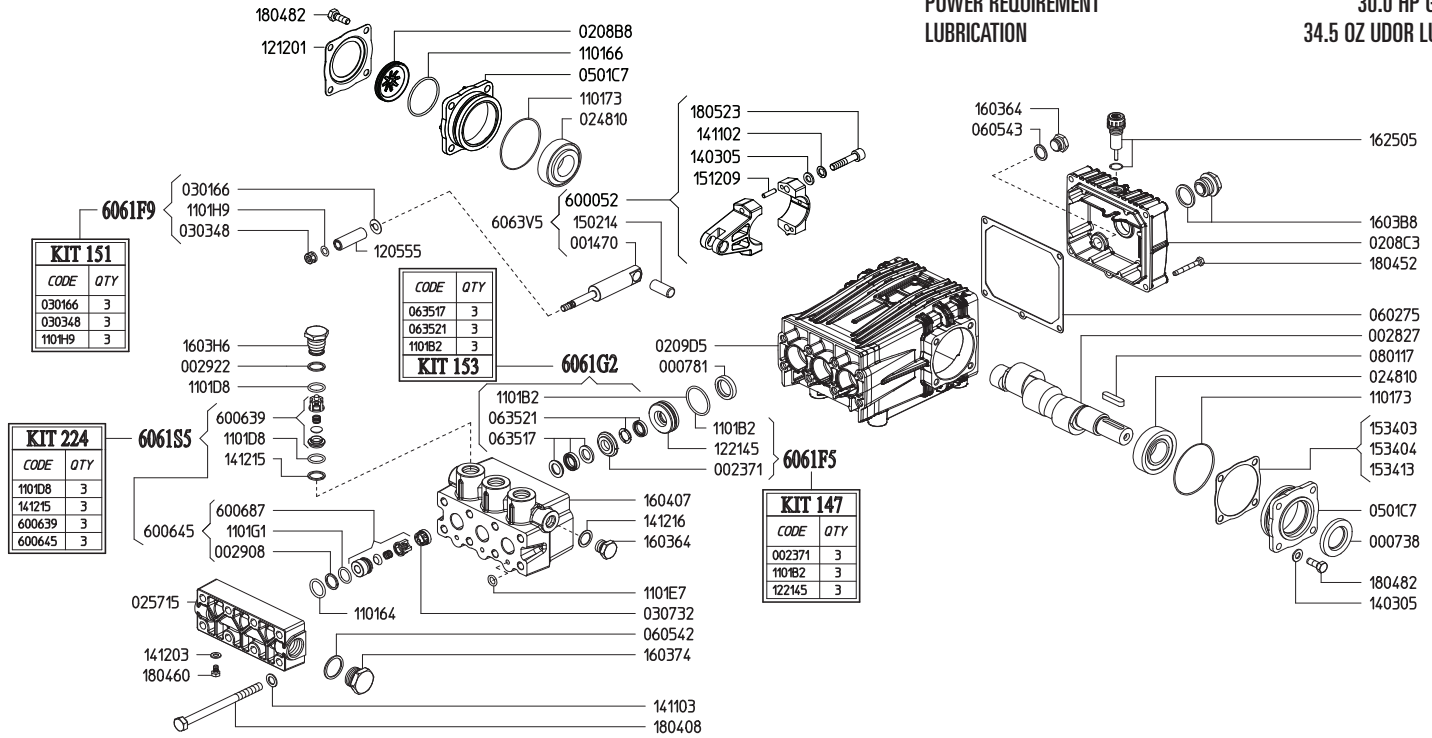
	Model	Flow		Pressure		Plunger Dia.	Crankshaft		Power	Seal Kit	Valve Kit	Wt.
		GPM	l/min	PSI	bar		Stroke	Code				
Gear Reduction	CXC 15/50 GR	4.0	15.0	7250	500	15mm	21.0mm	E	26.0 HP Gas	6061.88	6061.S5	59 lbs
	<b>CXC 18/50 GR</b>	4.8	18.0	7250	500	18mm	17.0mm	Y	32.0 HP Gas	6061.G2	6061.S5	59 lbs
	CXC 22/50 GR	5.8	22.0	7250	500	18mm	21.0mm	E	36.0 HP Gas	6061.G2	6061.S5	59 lbs

**NOTE:** All models available with 1" or 1-1/8" Hollow Shafts . Specify size when ordering (ex. **CXC 15/50 GR1** or **CXC 15/50 GR1-1/8.**)



MAX OUTPUT  
MAX OUTPUT  
RATED PUMP SPEED  
POWER REQUIREMENT  
LUBRICATION

4.8 GPM / 18.0 L/MIN  
7250 PSI / 500 BAR  
1450 RPM  
30.0 HP GAS  
34.5 OZ UDOR LUBE



Revised 9-27-2024

Part #	Description	Qty	Part #	Description	Qty
0007.38	OIL SEAL D30	1	1403.05	WASHER D8.4	10
0007.81	OIL SEAL D20	3	1411.02	SERRATED WASHER D8	6
0014.69	PLUNGER GUIDE D15 "CX/CH"	3	1411.03	SERRATED WASHER D10	8
0023.71	UPPER RING D18 <sup>D</sup>	3	1412.03	SERRATED WASHER D10	1
0028.27	MALE SHAFT "CX" D24	1	1412.15	RING 400BAR <sup>A</sup>	3
0029.08	RING	3	1412.16	BONDED WASHER D17.3	1
0029.22	RING D15.2	3	1502.14	PIN D14X32	3
0208.B8	OIL SIGHT GLASS	1	1512.09	PLUG D5X20 UNI1707	6
0208.C3	BACK COVER "C/CK/CX"	1	1534.03	SHIM 0.1 MM	-
0209.D5	CRANKCASE "C/CK/CH/CX"	1	1534.04	SHIM 0.2 MM	-
0248.10	ROLLER BEARING D30	2	1534.13	SHIM 0.05 MM	-
0257.15	SUCTION MANIFOLD "CX"	1	1603.64	PLUG G3/8	2
0301.66	SLINGER RING <sup>B</sup>	3	1603.74	PLUG G3/4	1
0303.48	NUT D18 <sup>B</sup>	3	1603.B8	OIL PLUG G3/4 + GASKET	1
0307.32	SPACER D16/18	3	1603.H6	VALVE PLUG "CK/CX" PISTON D20	3
0501.C7	BEARING HOLLOW FLANGE	2	1604.07	HEAD "CX" PISTON D18	1
0602.75	BACK COVER GASKET	1	1625.05	OIL PLUG G3/8	1
0605.42	GASKET D27	1	1804.08	HEX BOLT M10X140	8
0605.43	GASKET D17	1	1804.09	HEX BOLT M8X40	6
0635.17	HIGH PRESS. SEAL KIT D18 <sup>C</sup>	3	1804.52	HEX BOLT M6X45	5
0635.21	LOW PRESS. SEAL KIT D18 <sup>C</sup>	3	1804.60	HEX BOLT M6X10	1
0801.17	KEY A8X7X35	1	1804.82	HEX BOLT M8X22	8
1101.64	O-RING - INLET VALVE	3	6000.41	ROD ASSEMBLY	3
1101.66	O-RING - OIL SIGHT GLASS	1	6006.39	VALVE ASSY 400BAR W/O O-RING <sup>A</sup>	3
1101.73	O-RING - BEARING FLANGE	2	6006.45	SUCTION VALVE ASSEMBLY COMPLETE <sup>A</sup>	3
1101.B2	O-RING - PRESSURE RING <sup>C D</sup>	3	6006.87	SUCTION VALVE ASSEMBLY	3
1101.D8	O-RING - DISCHARGE VALVE <sup>A</sup>	3	6061.F9	PLUNGER KIT D18 (KIT 151)	
1101.D8	O-RING - DISCHARGE VALVE	3	6061.F5	BRASS RING KIT (KIT 147)	
1101.E7	O-RING - SPLIT MANIFOLD	3	6061.G2	WATER SEAL KIT (KIT 153)	
1101.G1	O-RING - INLET VALVE	3	6061.S5	VALVE KIT D15/18 "CX" (KIT 224)	
1101.H9	O-RING - PLUNGER BOLT <sup>B</sup>	3			
1205.55	CERAMIC PLUNGER D18	3			
1212.01	RETAINER - OIL SIGHT GLASS	1			
1221.45	PRESSURE RING D18 <sup>D</sup>	3			

<sup>A</sup> Parts in 6061.S5 (Kit 224).

<sup>B</sup> Parts in 6061.F9 (Kit 151).

<sup>C</sup> Parts in 6061.G2 (Kit 153).

<sup>D</sup> Parts in 6061.F5 (Kit 147).

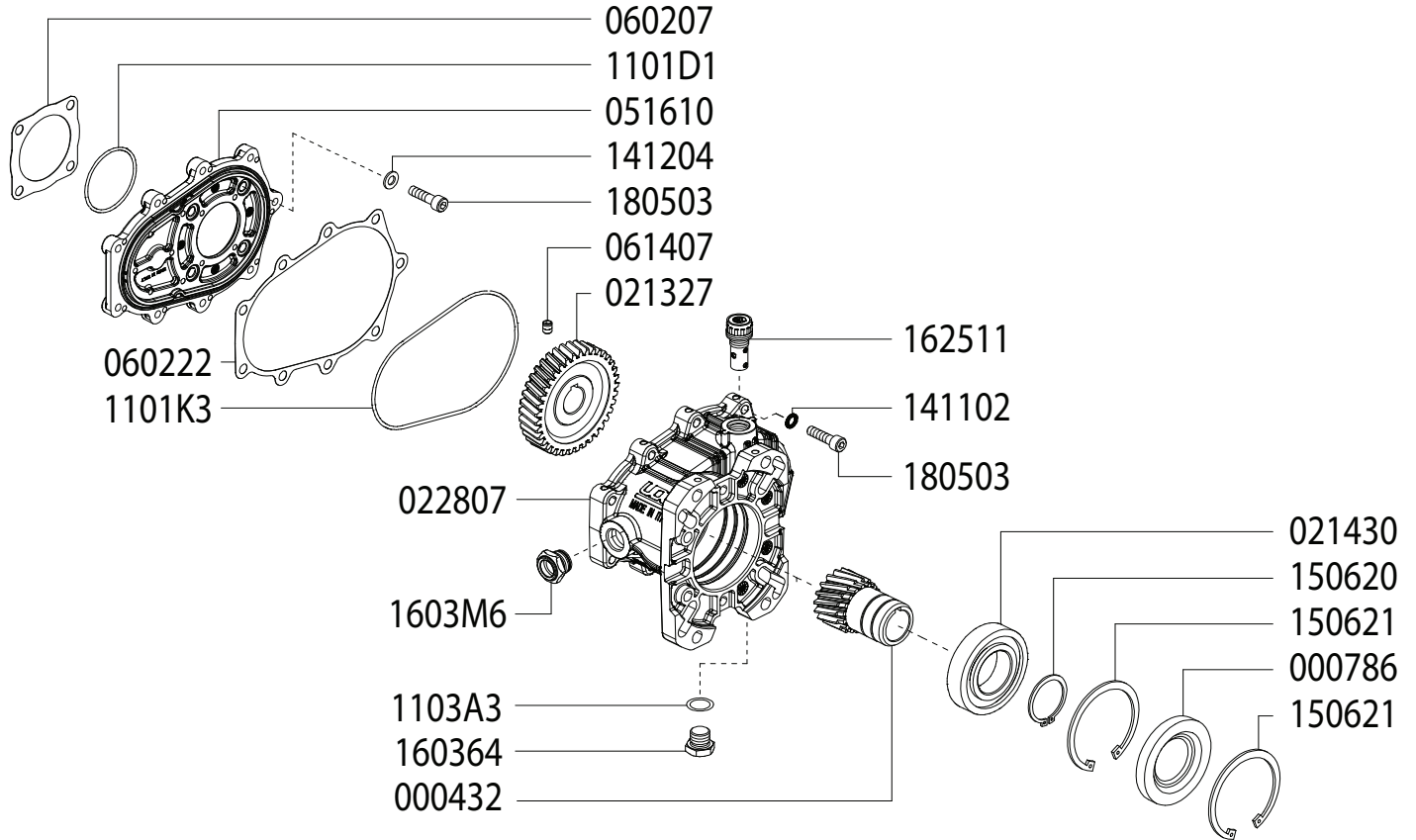
**GAS ENGINE GEAR REDUCTION FOR  
B/BK/BS/BWT/C/CS/CWT/CK/CX-SERIES PLUNGER PUMPS  
on GAS ENGINES with 1" SHAFTS  
REQUIRES 11.5 OZ. 90W GEAR LUBE**



Updated 9-27-2024

Part #	Description	Qty	Part #	Description	Qty
0004.56	GEAR - 1"	1	1101.D1	O-RING	1
0007.87	OIL SEAL - D40 - RBC122K	1	1101.K3	O-RING	1
0213.27	PUMP GEAR	1	1411.02	WASHER	9
0214.22	BEARING - D40 - RBC122K	1	1412.04	WASHER	4
0228.07	COUPLER - RBC122	1	1506.20	SNAP RING - D40	1
0516.10	FLANGE - RBC122	1	1506.21	SNAP RING - D80	2
0602.07	GASKET - RC122	1	1603.64	PLUG - 3/8"	1
0602.22	GASKET - RBC122 HOUSING	1	1603.M6	OIL SIGHT GLASS	1
0614.07	SET SCREW - M5X8	1	1625.11	OIL PLUG - G3/8"	1
1101.A3	O-RING	1	1805.03	ALLEN BOLT - M8x30	13

**GAS ENGINE GEAR REDUCTION FOR  
B/BK/BS/BWT/C/CS/CWT/CK/CX-SERIES PLUNGER PUMPS  
on GAS ENGINES with 1-1/8" SHAFTS  
REQUIRES 11.5 OZ. 90W GEAR LUBE**

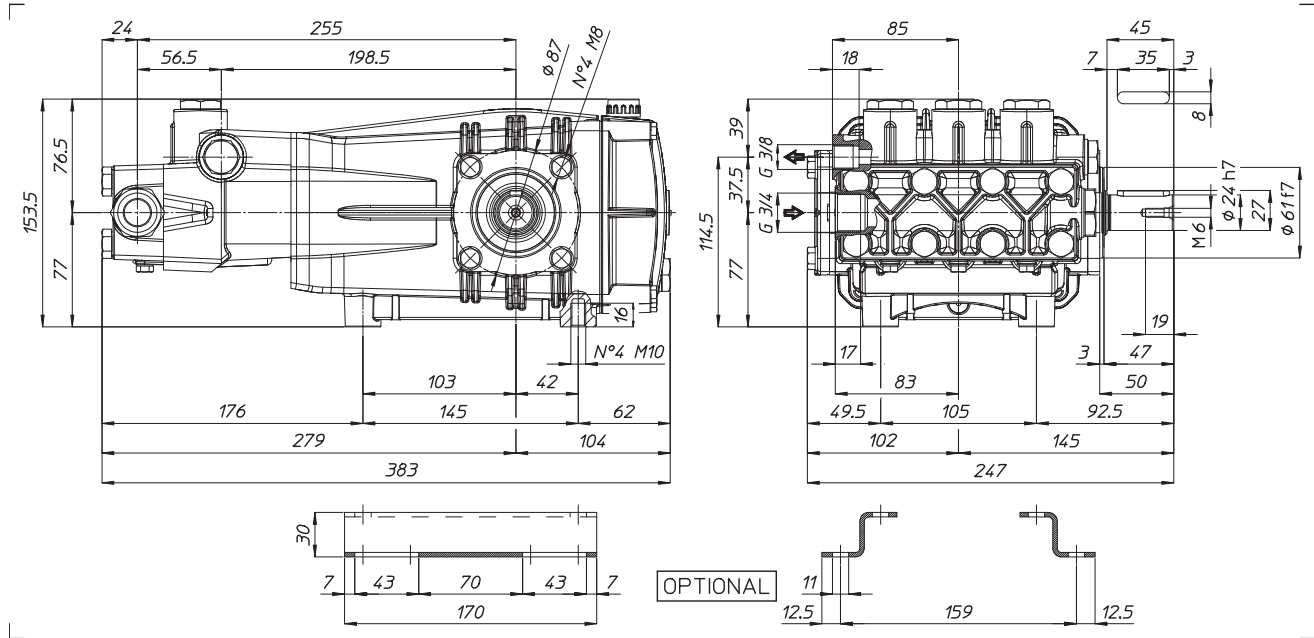


Updated 9-27-2024

Part #	Description	Qty	Part #	Description	Qty
0004.32	GEAR - 1-1/8"	1	1101.D1	O-RING	1
0007.87	OIL SEAL - D40 - RBC122X	1	1101.K3	O-RING	1
0213.27	PUMP GEAR	1	1411.02	WASHER	9
0214.30	BEARING - D40 - RBC122X	1	1412.04	WASHER	4
0228.07	COUPLER - RBC122	1	1506.20	SNAP RING - D40	1
0516.10	FLANGE - RBC122	1	1506.21	SNAP RING - D80	2
0602.07	GASKET - RC122	1	1603.64	PLUG - 3/8"	1
0602.22	GASKET - RBC122 HOUSING	1	1603.M6	OIL SIGHT GLASS	1
0614.07	SET SCREW - M5X8	1	1625.11	OIL PLUG - G3/8"	1
1101.A3	O-RING	1	1805.03	ALLEN BOLT - M8x30	13

*Dimensional Drawings are  
Shown in Millimeters.  
To Convert to Inches,  
Multiply Dimension x 0.03937*

## CX SERIES PUMPS - 24mm SOLID SHAFT



## TORQUE SPECS

Ref.	Description	Ft./lb.	Nm	Loctite*
1	Head Bolts	37	50	-
2	Valve Caps	-	-	-
3	Inlet Cap	103	140	-
4	Outlet Cap	60	80	243
5	Bearing Flange Bolts	19	25	-
6	Rear Cover Bolts	8	11	-
7	Connecting Rod Bolts	19	25	270
8	Plunger Bolts	15	20	270
9	Valve Cover Bolts	37	50	-
10	Oil Drain Plug	8	11	-

