

- Solid Ceramic Plungers
- Stainless Steel Check Valves
- Stainless Steel Block Manifold with Nickel Plated Valve Covers
- Deeper Back Cover for Increased Oil Capacity
- 34.5 oz. Capacity Vented Oil Bath Crank Case
- 3/4" BSP-F Inlet. 3/8" BSP-F Outlet
- Max Fluid Temp, 160°F

CHC Series 24mm Keyed Solid Shaft Plunger Pumps

CHC Series super duty plunger pumps include a wide range of models with flow rates from 3.2 to 5.3 GPM and pressures up to 7250 PSI.

Other drive options include gas engine gear reduction.

Applications include general pressure cleaning,, construction, hydro-excavation and oil field applications.

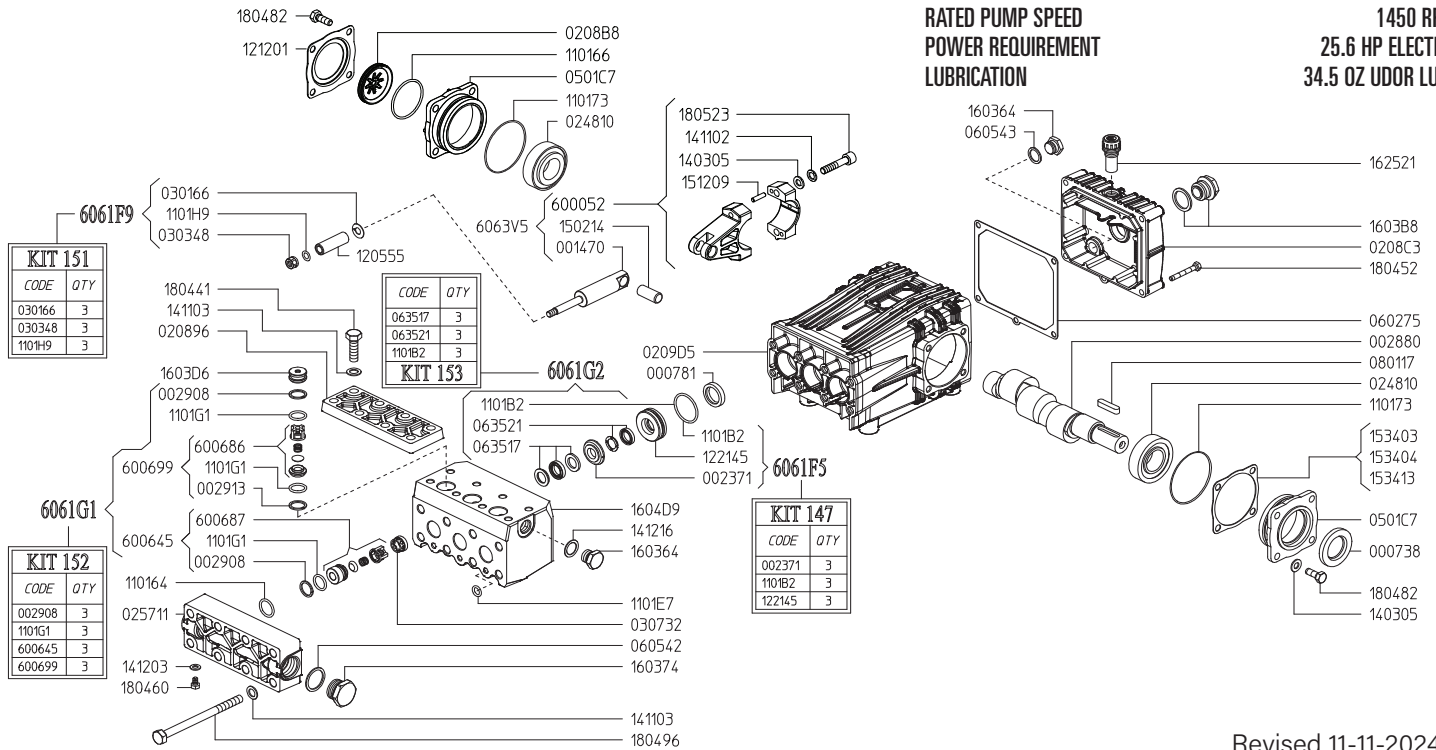
	Model	Flow		Pressure		Plunger Dia.	Crankshaft		Power	Seal Kit	Valve Kit	Wt.
		GPM	l/min	PSI	bar		Stroke	Code				
1450 RPM	CHC 12/50 S	3.2	12.0	7250	500	15mm	17.0mm	X	15.4 EBHP	6061.88	6061.G1	49 lbs
	CHC 16/50 S	4.2	16.0	7250	500	15mm	22.0mm	1	20.5 EBHP	6061.88	6061.G1	49 lbs
	CHC 20/50 S	5.3	20.0	7250	500	18mm	19.0mm	Y	25.6 EBHP	6061.G2	6061.G1	49 lbs

NOTE: All pump models available with left-hand drive option. Add 'L' to model number when ordering (ex. CHD 4.5/75 SL)



MAX FLOW
MAX PRESSURE
RATED PUMP SPEED
POWER REQUIREMENT
LUBRICATION

5.3 GPM / 20.0 L/MIN
7250 PSI / 500 BAR
1450 RPM
25.6 HP ELECTRIC
34.5 OZ UDOR LUBE



Revised 11-11-2024

Part #	Description	Qty
0007.38	OIL SEAL D30	1
0007.81	OIL SEAL D20	3
0014.69	PLUNGER GUIDE D15 "CH"	3
0023.71	UPPER RING D18 ^D	3
0028.80	MALE SHAFT D24	1
0029.08	RING ^A	3
0029.08	RING ^A / PART OF 6006.45	3
0029.13	RING ^A / PART OF 6006.99	3
0208.96	COVER "CH"	1
0208.B8	OIL SIGHT GLASS	1
0208.C3	BACK COVER "C/CK"	1
0209.D5	GRANKCASE "C/CK/CH"	1
0248.10	ROLLER BEARING D30	2
0257.11	SUCTION MANIFOLD	1
0301.66	SLINGER RING ^B	3
0303.48	NUT D18 ^B	3
0307.27	SPACER	3
0501.C7	BEARING HOLLOW FLANGE	2
0602.75	BACK COVER GASKET	1
0605.42	GASKET D27	1
0605.43	GASKET D17	1
0635.17	HIGH PRESSURE SEAL KIT D18 ^C	3
0635.21	LOW PRESSURE SEAL KIT D18 ^C	3
0801.17	KEY A8X7X35	1
1101.64	O-RING - SUCTION MANIFOLD	3
1101.66	O-RING - OIL SIGHT GLASS	1
1101.73	O-RING - BEARING FLANGE	2
1101.B2	O-RING - PRESSURE RING ^{C,D}	3
1101.E7	O-RING - SPLIT MANIFOLD	3
1101.G1	O-RING - VALVE ^A	3
1101.G1	O-RING - VALVE ^A / in 6006.99	3
1101.G1	O-RING - VALVE ^A / in 6006.45	3
1101.H9	O-RING - PLUNGER ^B	3
1205.55	CERAMIC PLUNGER D18	3
1212.01	RETAINER - OIL SIGHT GLASS	1
1221.45	PRESSURE RING D18 ^D	3

Part #	Description	Qty
1403.05	WASHER D8.4	10
1411.02	SERRATED WASHER D8	6
1411.03	SERRATED WASHER D10	16
1412.03	BONDED WASHER D6.7	1
1412.16	BONDED WASHER D17.3	1
1502.14	PIN D14X32	3
1512.09	PLUG D5X20 UNI1707	6
1534.03	SHIM 0.1 MM	-
1534.04	SHIM 0.2 MM	-
1534.13	SHIM 0.05 MM	-
1603.64	PLUG G3/8	2
1603.74	PLUG G3/4	1
1603.B8	OIL PLUG G3/4 + GASKET	1
1603.D6	PLUG	3
1604.D9	HEAD PISTON D18 SS	1
1625.21	OIL PLUG G3/8	1
1804.09	HEX BOLT M8X40	6
1804.41	HEX BOLT M10X35	8
1804.52	HEX BOLT M6X45	5
1804.60	HEX BOLT M6X10	1
1804.82	HEX BOLT M8X22	8
1804.96	HEX BOLT M10X140	8
6000.52	ROD ASSEMBLY	3
6006.45	SUCTION VALVE ASS'Y COMPLETE ^A	3
6006.86	OUTLET VALVE ASS'Y W/O O-RING ^A / in 6006.99	3
6006.87	SUCTION VALVE ASS'Y W/O O-RING ^A / in 6006.45	3
6006.99	OUTLET VALVE ASS'Y COMPLETE ^A	3
6061.F5	BRASS RING KIT D18 (KIT 147)	
6061.F9	PLUNGER KIT D18 (KIT 151)	
6061.G1	VALVE KIT D18 (KIT 152)	
6061.G2	WATER SEAL KIT (KIT 153)	

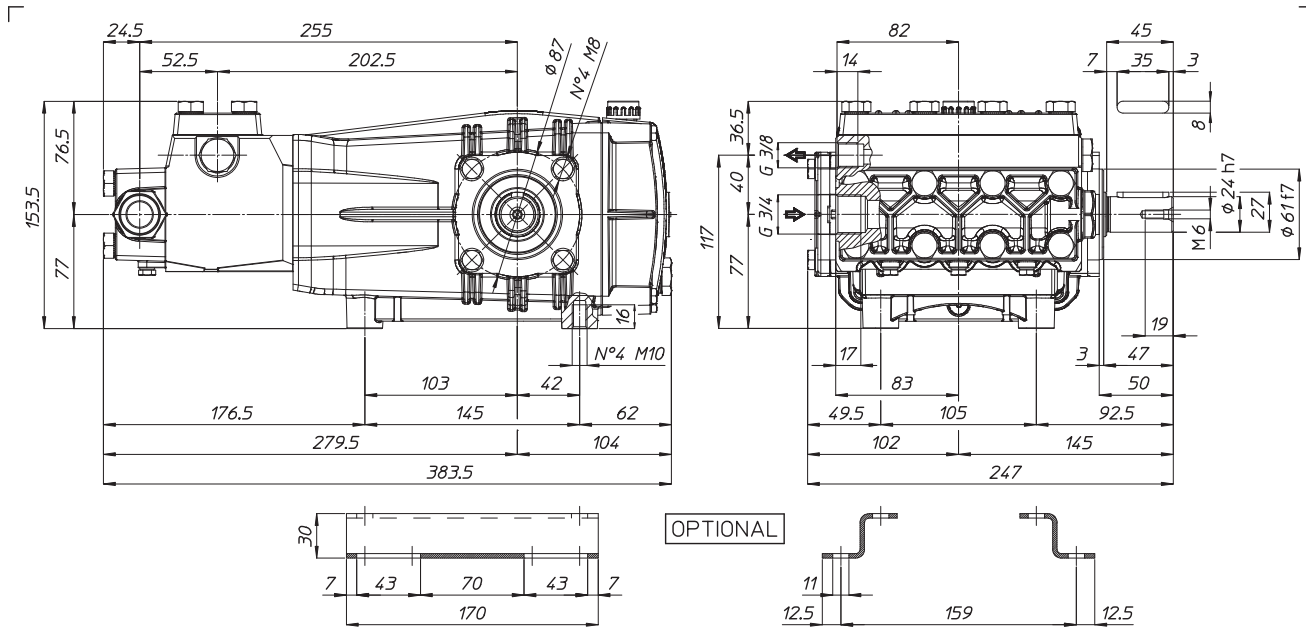
^A Parts in 6061.G1 (Kit 152).
^B Parts in 6061.F9 (Kit 151).
^C Parts in 6061.G2 (Kit 153).
^D Parts in 6061.F5 (Kit 147).

WEIGHT
LUBRICATION

49 LBS
34.5 OZ UDOR LUBE

*Dimensional Drawings are
Shown in Millimeters.
To Convert to Inches,
Multiply Dimension x 0.03937*

CH SERIES PUMPS - 24mm SOLID SHAFT



TORQUE SPECS

Ref.	Description	Ft./lb.	Nm	Loctite®
1	Head Bolts	37	50	-
2	Valve Caps	-	-	-
3	Inlet Cap	103	140	-
4	Outlet Cap	60	80	243
5	Bearing Flange Bolts	19	25	-
6	Rear Cover Bolts	8	11	-
7	Connecting Rod Bolts	19	25	270
8	Plunger Bolts	15	20	270
9	Valve Cover Bolts	37	50	-
10	Oil Drain Plug	8	11	-

