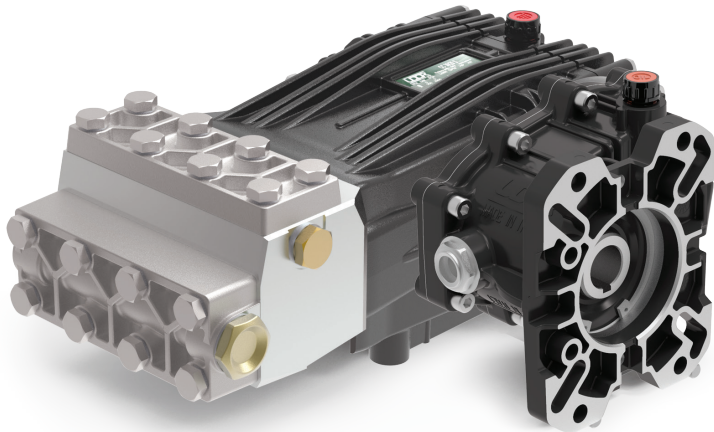


## Gear Reduction, Gas Engine Models

1" or 1-1/8" Hollow Shaft, SAE J609-B Flange.  
2.2:1 Gear Reduction Drive



- Solid Ceramic Plungers
- Stainless Steel Check Valves
- Stainless Steel Block Manifold with Nickel Plated Valve Covers
- Deeper Back Cover for Increased Oil Capacity
- 34.5 oz. Capacity Vented Oil Bath Crank Case
- 3/4" BSP-F Inlet. 3/8" BSP-F Outlet
- Max Fluid Temp, 160°F

### CHC Series Gas Engine, Gear Reduction Drive Plunger Pumps

CHC Series super duty plunger pumps include a wide range of models with flow rates from 3.2 to 5.3 GPM and pressures up to 7250 PSI.

Other drive options include a 24mm solid, keyed shaft.

Applications include general pressure cleaning,, construction, hydro-excavation and oil field applications.

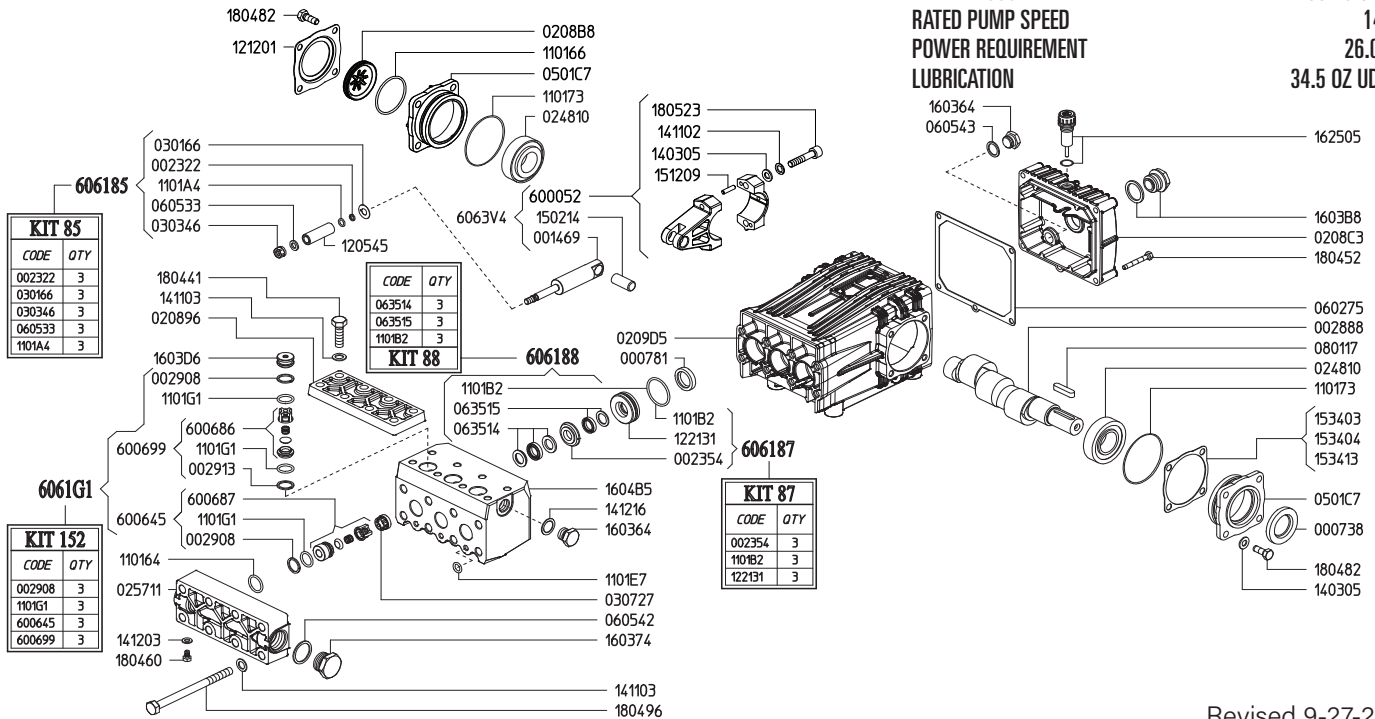
	Model	Flow		Pressure		Plunger Dia.	Crankshaft		Power	Seal Kit	Valve Kit	Wt.
		GPM	l/min	PSI	bar		Stroke	Code				
Gear Reduction	CHC 12/50 GR	3.2	12.0	7250	500	15mm	17.0mm	X	20.0 HP Gas	6061.88	6061.G1	59 lbs
	<b>CHC 16/50 GR</b>	4.2	16.0	7250	500	15mm	22.0mm	1	26.0 HP Gas	6061.88	6061.G1	59 lbs
	CHC 20/50 GR	5.3	20.0	7250	500	18mm	19.0mm	Y	34.0 HP Gas	6061.G2	6061.G1	59 lbs

**NOTE:** All models available with 1" or 1-1/8" Hollow Shafts . Specify size when ordering (ex. **CHC 12/50 GR1** or **CHC 12/50 GR1-1/8.**)



MAX FLOW  
MAX PRESSURE  
RATED PUMP SPEED  
POWER REQUIREMENT  
LUBRICATION

4.2 GPM / 16.0 L/MIN  
7250 PSI / 500 BAR  
1450 RPM  
26.0 HP GAS  
34.5 OZ UDOR LUBE



Revised 9-27-2024

Part #	Description	Qty	Part #	Description	Qty
0007.38	OIL SEAL D30	1	1221.31	PRESSURE RING D15 <sup>D</sup>	3
0007.81	OIL SEAL D20	3	1403.05	WASHER D8.4	10
0014.69	PLUNGER GUIDE D15 "CH"	3	1411.02	SERRATED WASHER D8	6
0023.22	RING D6.3 <sup>B</sup>	3	1411.03	SERRATED WASHER D10	16
0023.54	UPPER RING D15 <sup>D</sup>	3	1412.03	BONDED WASHER D6.7	1
0028.88	MALE SHAFT D24	1	1412.16	BONDED WASHER D17.3	1
0029.08	RING <sup>A</sup>	3	1502.14	PIN D14X32	3
0029.08	RING <sup>A</sup> / PART OF 6006.45	3	1512.09	PLUG D5X20 UNI1707	6
0029.13	RING <sup>A</sup> / PART OF 6006.99	3	1534.03	SHIM 0.1 MM	-
0208.96	COVER "CH"	1	1534.04	SHIM 0.2 MM	-
0208.B8	OIL SIGHT GLASS	1	1534.13	SHIM 0.05 MM	-
0208.C3	BACK COVER "C/CK"	1	1603.64	PLUG G3/8	2
0209.D5	GRANKCASE "C/CK/CH"	1	1603.74	PLUG G3/4	1
0248.10	ROLLER BEARING D30	2	1603.B8	OIL PLUG G3/4 + GASKET	1
0257.11	SUCTION MANIFOLD	1	1603.D6	PLUG	3
0301.66	SLINGER RING <sup>B</sup>	3	1604.B5	HEAD PISTON D15 SS	1
0303.46	NUT D15 <sup>B</sup>	3	1625.05	OIL PLUG G3/8	1
0307.27	SPACER	3	1804.09	HEX BOLT M8X40	6
0501.C7	BEARING HOLLOW FLANGE	2	1804.41	HEX BOLT M10X35	8
0602.75	BACK COVER GASKET	1	1804.52	HEX BOLT M6X45	5
0605.33	GASKET D8 <sup>B</sup>	3	1804.60	HEX BOLT M6X10	1
0605.42	GASKET D27	1	1804.82	HEX BOLT M8X22	8
0605.43	GASKET D17	1	1804.96	HEX BOLT M10X140	8
0635.14	HIGH PRESSURE SEAL KIT D15 <sup>C</sup>	3	6000.52	ROD ASSEMBLY	3
0635.15	LOW PRESSURE SEAL KIT D15 <sup>C</sup>	3	6006.45	SUCTION VALVE ASS'Y COMPLETE <sup>A</sup>	3
0801.17	KEY A8X7X35	1	6006.86	OUTLET VALVE ASS'Y W/O O-RING <sup>A</sup> / in 6006.99	3
1101.64	O-RING - SUCTION MANIFOLD	3	6006.87	SUCTION VALVE ASS'Y W/O O-RING <sup>A</sup> / in 6006.45	3
1101.66	O-RING - OIL SIGHT GLASS	1	6006.99	OUTLET VALVE ASS'Y COMPLETE <sup>A</sup>	3
1101.73	O-RING - BEARING FLANGE	2	6061.85	PLUNGER KIT D15 (KIT 85)	-
1101.A4	O-RING - PLUNGER <sup>B</sup>	3	6061.87	BRASS RING KIT D15 (KIT 87)	-
1101.B2	O-RING - PRESSURE RING <sup>C D</sup>	3	6061.88	WATER SEAL KIT (KIT 88)	-
1101.E7	O-RING - SPLIT MANIFOLD	3	6061.G1	VALVE KIT D18 (KIT 152)	-
1101.G1	O-RING - VALVE <sup>A</sup>	3			
1101.G1	O-RING - VALVE <sup>A</sup> / in 6006.99	3			
1101.G1	O-RING - VALVE <sup>A</sup> / in 6006.45	3			
1205.45	CERAMIC PLUNGER D15	3			
1212.01	RETAINER - OIL SIGHT GLASS	1			

<sup>A</sup> Parts in 6061.G1 (Kit 152).

<sup>B</sup> Parts in 6061.85 (Kit 85).

<sup>C</sup> Parts in 6061.88 (Kit 88).

<sup>D</sup> Parts in 6061.87 (Kit 87).

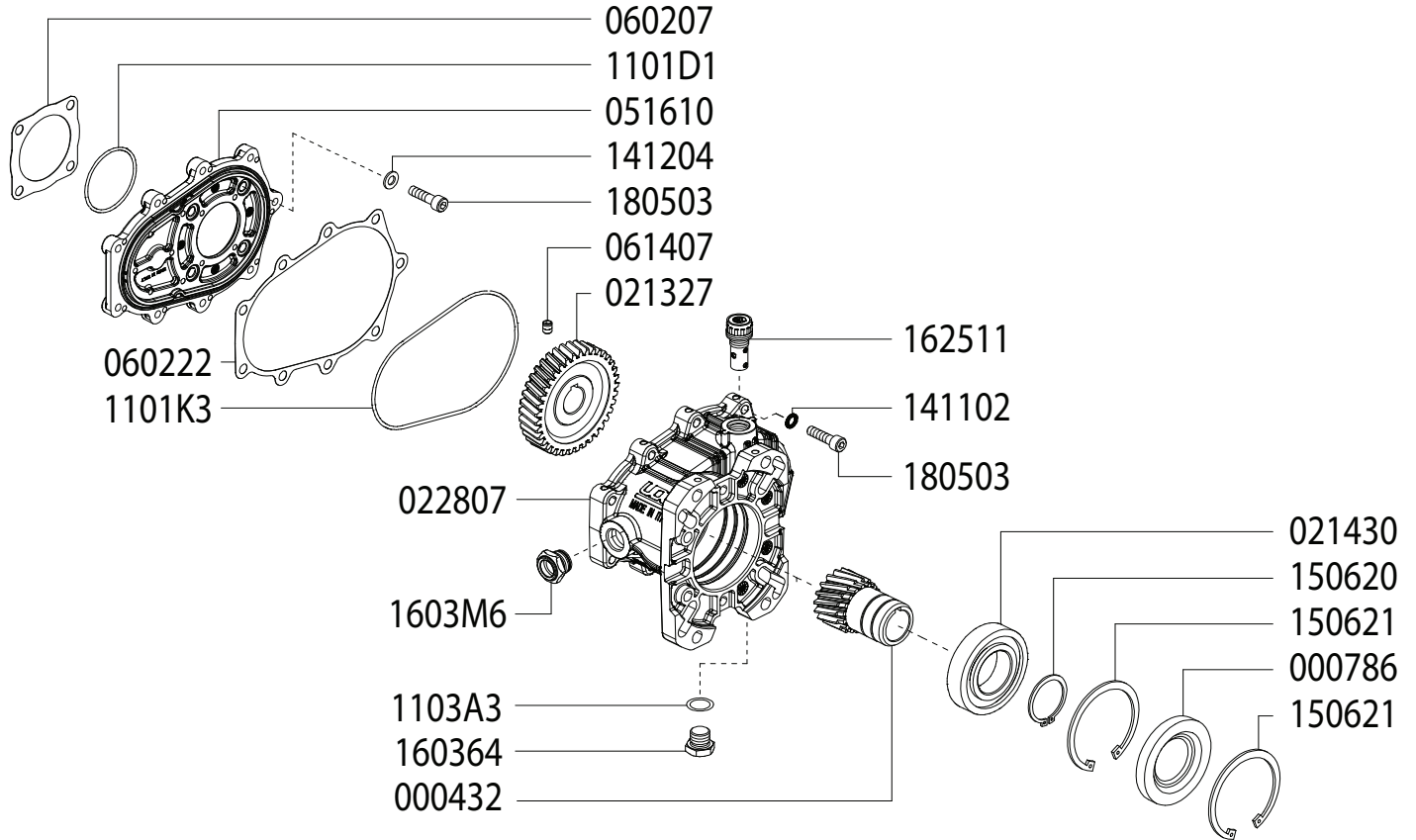
**GAS ENGINE GEAR REDUCTION FOR  
B/BK/BS/BWT/C/CS/CWT/CK/CX-SERIES PLUNGER PUMPS  
on GAS ENGINES with 1" SHAFTS  
REQUIRES 11.5 OZ. 90W GEAR LUBE**



Updated 9-27-2024

Part #	Description	Qty	Part #	Description	Qty
0004.56	GEAR - 1"	1	1101.D1	O-RING	1
0007.87	OIL SEAL - D40 - RBC122K	1	1101.K3	O-RING	1
0213.27	PUMP GEAR	1	1411.02	WASHER	9
0214.22	BEARING - D40 - RBC122K	1	1412.04	WASHER	4
0228.07	COUPLER - RBC122	1	1506.20	SNAP RING - D40	1
0516.10	FLANGE - RBC122	1	1506.21	SNAP RING - D80	2
0602.07	GASKET - RC122	1	1603.64	PLUG - 3/8"	1
0602.22	GASKET - RBC122 HOUSING	1	1603.M6	OIL SIGHT GLASS	1
0614.07	SET SCREW - M5X8	1	1625.11	OIL PLUG - G3/8"	1
1101.A3	O-RING	1	1805.03	ALLEN BOLT - M8x30	13

**GAS ENGINE GEAR REDUCTION FOR  
B/BK/BS/BWT/C/CS/CWT/CK/CX-SERIES PLUNGER PUMPS  
on GAS ENGINES with 1-1/8" SHAFTS  
REQUIRES 11.5 OZ. 90W GEAR LUBE**



Updated 9-27-2024

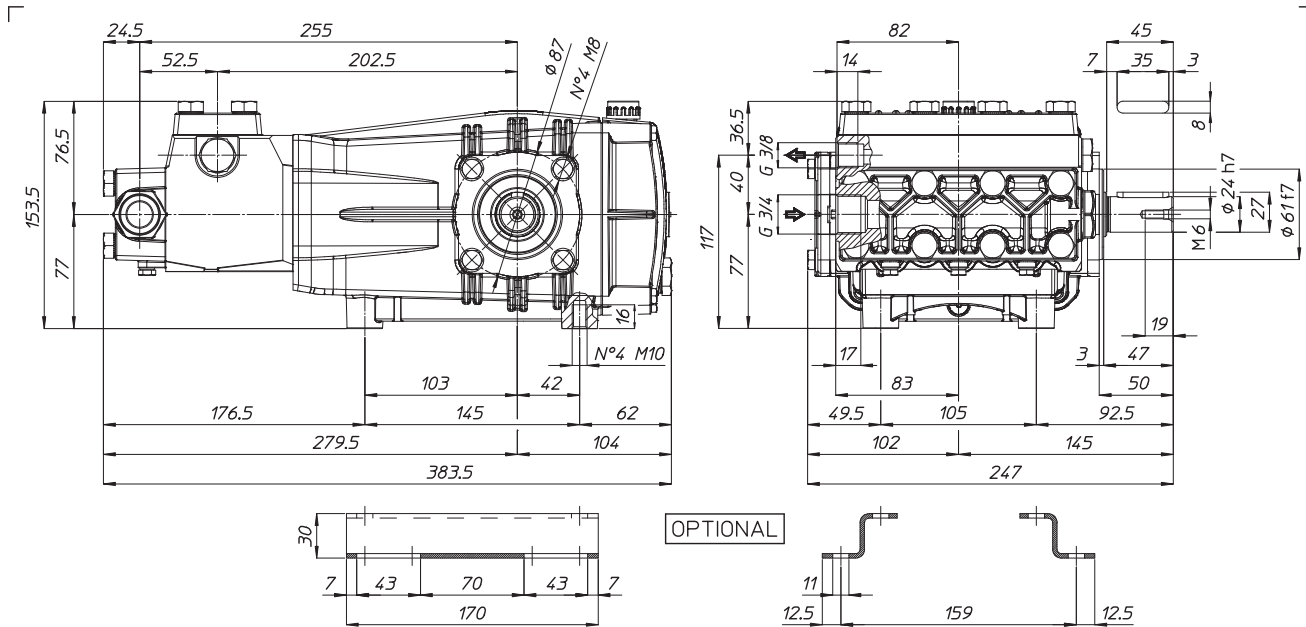
Part #	Description	Qty	Part #	Description	Qty
0004.32	GEAR - 1-1/8"	1	1101.D1	O-RING	1
0007.87	OIL SEAL - D40 - RBC122X	1	1101.K3	O-RING	1
0213.27	PUMP GEAR	1	1411.02	WASHER	9
0214.30	BEARING - D40 - RBC122X	1	1412.04	WASHER	4
0228.07	COUPLER - RBC122	1	1506.20	SNAP RING - D40	1
0516.10	FLANGE - RBC122	1	1506.21	SNAP RING - D80	2
0602.07	GASKET - RC122	1	1603.64	PLUG - 3/8"	1
0602.22	GASKET - RBC122 HOUSING	1	1603.M6	OIL SIGHT GLASS	1
0614.07	SET SCREW - M5X8	1	1625.11	OIL PLUG - G3/8"	1
1101.A3	O-RING	1	1805.03	ALLEN BOLT - M8x30	13

WEIGHT  
LUBRICATION

49 LBS  
34.5 OZ UDOR LUBE

*Dimensional Drawings are  
Shown in Millimeters.  
To Convert to Inches,  
Multiply Dimension x 0.03937*

## CH SERIES PUMPS - 24mm SOLID SHAFT



## TORQUE SPECS

Ref.	Description	Ft./lb.	Nm	Loctite®
1	Head Bolts	37	50	-
2	Valve Caps	-	-	-
3	Inlet Cap	103	140	-
4	Outlet Cap	60	80	243
5	Bearing Flange Bolts	19	25	-
6	Rear Cover Bolts	8	11	-
7	Connecting Rod Bolts	19	25	270
8	Plunger Bolts	15	20	270
9	Valve Cover Bolts	37	50	-
10	Oil Drain Plug	8	11	-

