



UDOR[®]
USA

World Leader in Diaphragm and Plunger Pumps



Sewer Jetting Applications
Plunger Pumps and Accessories

Pumps for Sewer Jetting Applications

Sewer jetters face a variety of challenges, from cutting through roots in residential systems to jetting highly contaminated municipal or industrial locations. Sewer jetting systems use high-pressure water to remove obstructions and build-up in sewer/drain lines. High-pressure jetting is necessary for proper line maintenance and is a cost-effective alternative to line replacement.

Designed and engineered to handle the toughest applications. From smaller portable units to larger truck or trailer mounted rigs, UDOR USA offers the pumps and drive options to meet your specific needs.

With features like anodized die-cast aluminum crankcases, heavy duty brass manifolds, heavy duty bronze connecting rods, stainless steel conical valve assemblies, tapered roller bearings, heat treated crank shafts, stainless steel stepped plunger guides for increased seal life, replaceable PTFE coated body guides and high-polished solid ceramic plungers, our pumps will provide the service life you've come to expect from UDOR USA.

Your company depends on providing a quality product that will withstand the harshest conditions. Designed and built in our factory in Italy, UDOR USA's complete line of industrial duty pumps not only meets your needs today, but they provide solutions that help your company grow tomorrow.

PN SERIES ▼



0.5 to 4.0 GPM
Up to 2465 PSI
24mm Male Solid Shaft
1450, 1750 & 3400 RPM
Also Available with
Gas Engine Gear Reduction Drive
and Direct Drive Gas & Electric Flanges

B SERIES ▼



3.4 to 6.0 GPM
Up to 2900 PSI
24mm Male Solid Shaft
1450, 1750 & 3400 RPM
Also Available with
Gas Engine Gear Reduction Drive
and Direct Drive Gas & Electric Flanges

BK SERIES ▼



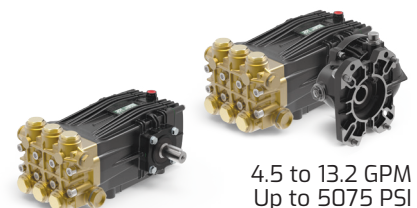
3.4 to 5.5 GPM
Up to 4350 PSI
24mm Male Solid Shaft
1450, 1750 & 3400 RPM
Also Available with
Gas Engine Gear Reduction Drive
and Direct Drive Gas Flanges

C SERIES ▼



5.5 to 18.5 GPM
Up to 2900 PSI
24mm Male Solid Shaft
1450 & 1750 RPM
Also Available with
Gas Engine Gear Reduction Drive

CK SERIES ▼



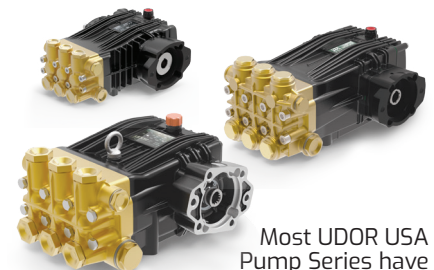
4.5 to 13.2 GPM
Up to 5075 PSI
24mm Male Solid Shaft
1450 & 1750 RPM
Also Available with
Gas Engine Gear Reduction Drive

NK SERIES ▼



9.1 to 37.8 GPM
Up to 5075 PSI
30mm Solid Keyed Shaft
1450 & 1750 RPM
Also Available with
Gas Engine Gear Reduction Drive

HYDRAULIC DRIVE ▼



Most UDOR USA
Pump Series have
Hydraulic (MI) Drive
Options Available



BYPASS UNLOADERS ▼



UD130
5.0 GPM @ 2300 PSI
3/8" M Inlet
3/8" M Outlet
3/8" F Bypass



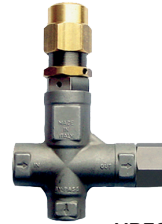
UD7300
10.5 GPM @ 3625 PSI
3/8" F Inlet
3/8" F Outlet
3/8" F Bypass



UD7400
10.5 GPM @ 4350 PSI
3/8" F Inlet
3/8" F Outlet
3/8" F Bypass



UB351
10.5 GPM @ 5075 PSI
3/8" M Inlet
3/8" F Outlet
3/8" F Bypass



UB501
21.0 GPM @ 7250 PSI
1/2" F Inlet
1/2" F Outlet
1/2" F Bypass



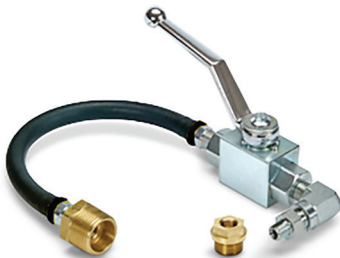
UB600
15.9 GPM @ 8700 PSI
1/2" F Inlet
1/2" F Outlet
3/8" F Bypass

PUMP PULSATION KIT ▼

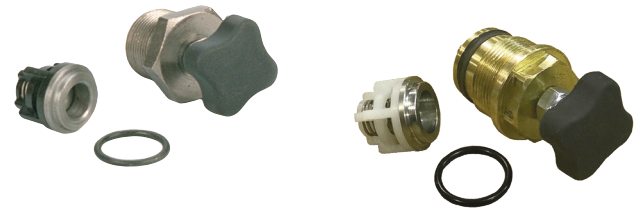
The UDOR USA Pulsation Kit allows a user open or close a ball valve to switch between a pulsating jet or standard high-pressure operation.

When the ball valve is opened, flow from one of the three inlet valves is bypassed back to the pump inlet, eliminating the possibility of dead-heading the pump.

The Pulsation Kit easily mounts to the inlet manifold valve plug on many models for a simple field-retrofit.



PULSING VALVES ▼



The UDOR USA Pulsing Valves allows a user close one valve on the pump to switch between a pulsating jet or standard high-pressure operation.

These valve kits replace one of the inlet valves and caps and are available for most UDOR plunger pumps.

DRIVE COMPONENTS AND MOUNTING ▼



DRIVE COMPONENTS

Udor USA offers a broad range of drive components to accommodate your equipment needs.

- Gear reductions for engines up to 75 HP
- Hydraulic motors
- Mounting flanges for gas, electric and hydraulic applications
- Shaft couplers for electric and hydraulic motors
- Mounting rails and hardware

INLET FILTERS ▼



POLYPROPYLENE INLET FILTERS

- 1", 1-1/4" and 1-1/2" Models
- 32 Mesh - for Plunger Pump Applications
- 16 Mesh - for Diaphragm Pump Applications

PUMP LUBRICATION ▼

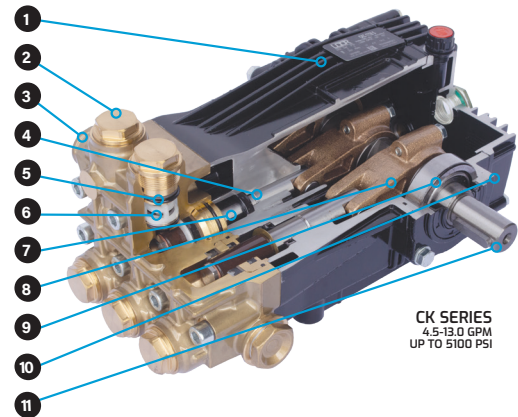


UDOR LUBE / UDOR LUBE SYNTHETIC

SAE 40W non-detergent lubricant. Specially formulated for use in Udor diaphragm & plunger pumps.

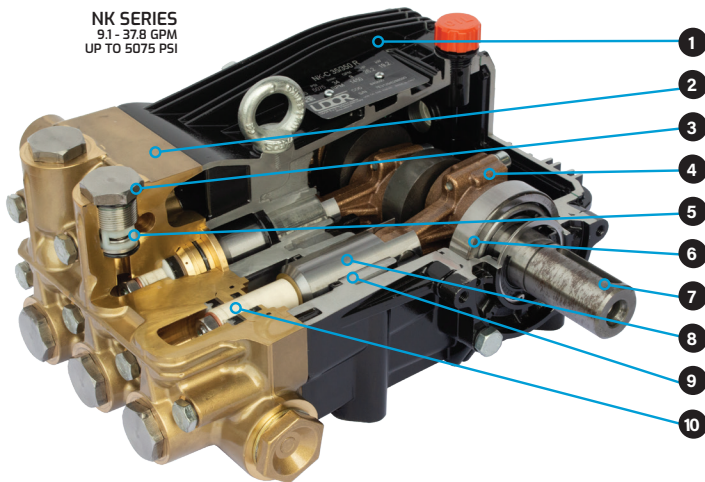
- Non-Detergent. Non-Foaming
- Rust Inhibitors
- Anti-wear Agents
- Resists Breakdown Due to Oxidation
- Synthetic Oil Recommended for Cold Weather Uses

Industrial Duty Plunger Pumps



CK SERIES
4.5-13.0 GPM
UP TO 5100 PSI

- 1 Anodized Die-Cast Aluminum Crankcase
- 2 Large Diameter Valve Caps with Increased Thread Depth
- 3 Heavy Duty Brass Manifold with Internal and External Bracing
- 4 Stainless Steel Stepped Plunger Guide for Increased Seal Life
- 5 Bottom Mount O-Ring and Back-Up Ring to Prevent Thread Damage
- 6 Stainless Steel Conical Valve Assembly for Increased Efficiency
- 7 High-Polished Solid Ceramic Plungers
- 8 Heavy Duty Bronze Connecting Rods
- 9 Heavy Duty Tapered Roller Bearings
- 10 Deeper Back Cover for Increased Oil Capacity
- 11 Heat Treated Crank Shaft



NK SERIES
9.1 - 37.8 GPM
UP TO 5075 PSI

- 1 Anodized Die-Cast Aluminum Crankcase
- 2 Heavy Duty Brass Manifold with Internal and External Bracing
- 3 Large Diameter Valve Caps with 1-Piece Cover Plate
- 4 Heavy Duty Bronze Connecting Rods
- 5 Stainless Steel Conical Valve Assembly for Increased Efficiency
- 6 Heavy Duty Tapered Roller Bearings
- 7 Heat Treated Crank Shaft
- 8 Stainless Steel Stepped Plunger Guide for Increased Seal Life
- 9 Replaceable PTFE Coated Body Guides
- 10 High-Polished Solid Ceramic Plungers



UDOR[®]
USA
World Leader in Diaphragm and Plunger Pumps

An UDO[®] Brand
BOOMINATOR[®]
BOOMLESS SPRAY NOZZLES

6180 140th Avenue NW
Ramsey, MN 55303

Ph: 651-785-0666
Fax: 800-732-2670

www.udorusa.com
www.boominator.com
info@udorusa.com

Scan this QR Code
to Visit www.udorusa.com



FLYER
SJ224A