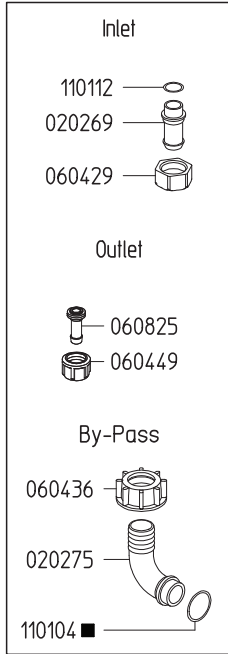
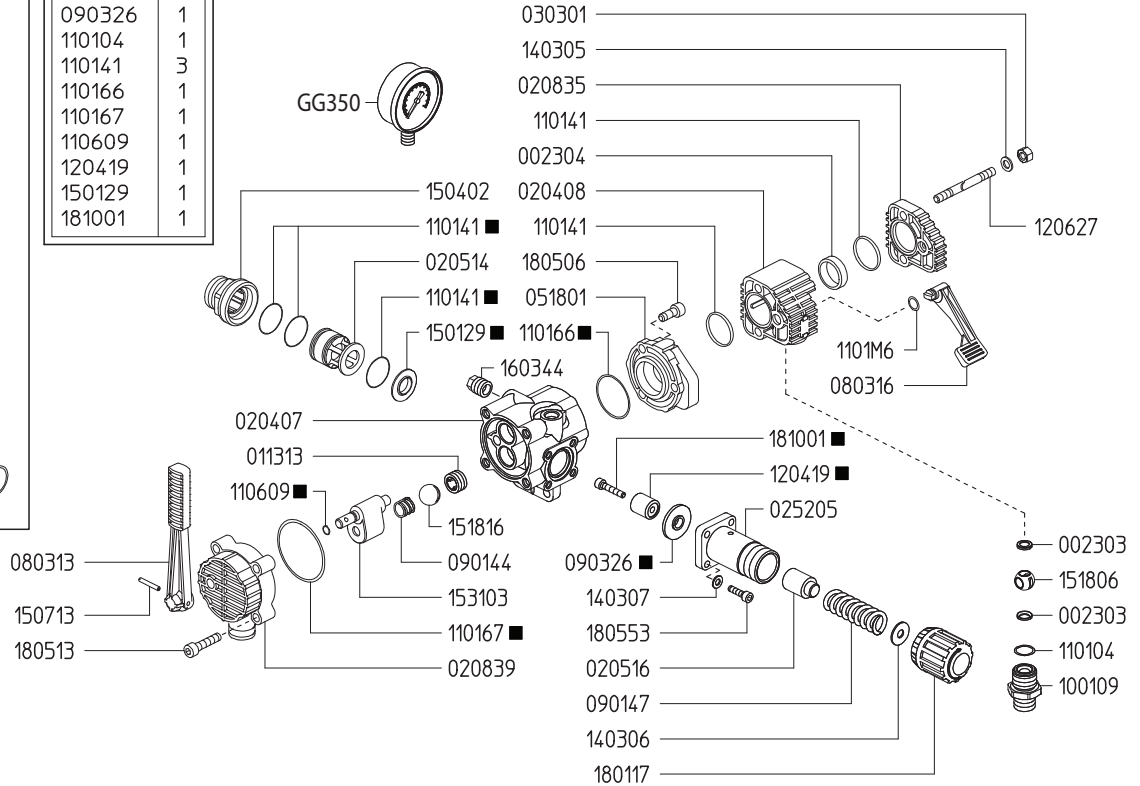


## Adjustable Pressure Regulator

Maximum Flow	32.0 GPM / 120 lpm
Maximum Pressure	290 PSI / 20 bar
Inlet Port - Hose Barb	3/4" HB
Outlet Ports - Hose Barb, Valve	(3) 1/2" HB
Bypass - Hose Barb	1" HB



606256	
KIT 555	
CODE	QTY
090326	1
110104	1
110141	3
110166	1
110167	1
110609	1
120419	1
150129	1
181001	1



Revised 6-6-2024

Part #	Description	Qty
0023.03	SEAL	6
0023.04	GUIDE	3
0113.13	BALL SEAT	2
0202.69	HOSE BARB D19	1
0202.75	BYPASS HOSE BARB	1
0204.07	RELIEF VALVE BODY	1
0204.08	VALVE BODY	3
0205.14	CYLINDER	1
0205.16	SPRING GUIDE	1
0208.35	END PLATE	1
0208.39	SELECTOR BODY	1
0252.05	SPRING BODY	1
0303.01	NUT	2
0518.01	FLANGE	1
0604.29	BARB NUT	1
0604.36	NUT	1
0604.49	PLASTIC BARB NUT	3
0608.25	HOSE BARB D10+GASKET	3
0803.13	LEVER	1
0803.16	LEVER	3
0901.44	BALL SPRING	1
0901.47	SPRING	1
0903.26	DIAPHRAGM	1
1001.09	NIPPLE	3
1101.04	O-RING	4
1101.12	O-RING	1

Part #	Description	Qty
1101.41	O-RING - RELIEF VALVE	3
1101.41	O-RING - BODY	4
1101.66	O-RING	1
1101.67	O-RING	1
1101.M6	O-RING	1
1106.09	O-RING	3
1204.19	STEEL POPPET	1
1206.27	STUD	2
1403.05	WASHER	
1403.06	WASHER	1
1403.07	WASHER	4
1501.29	SEAT	1
1504.02	SUCTION SEAT	1
1507.13	ROLL PIN	1
1518.06	OUTLET BALL	3
1518.16	CONTROL UNIT BALL	
1531.03	CONTROL SELECTOR	1
1603.44	PLUG	1
1801.17	ADJUSTMENT KNOB	1
1805.06	BOLT	3
1805.13	BOLT	4
1805.53	BOLT	4
1810.01	STAINLESS STEEL BOLT	1
GG350	PRESSURE GAUGE - 350PSI BOTTOM MOUNT	1
6062.56	REPAIR KIT FOR SB3 CONTROL UNIT	

■ Parts Included in Repair Kit 6062.56