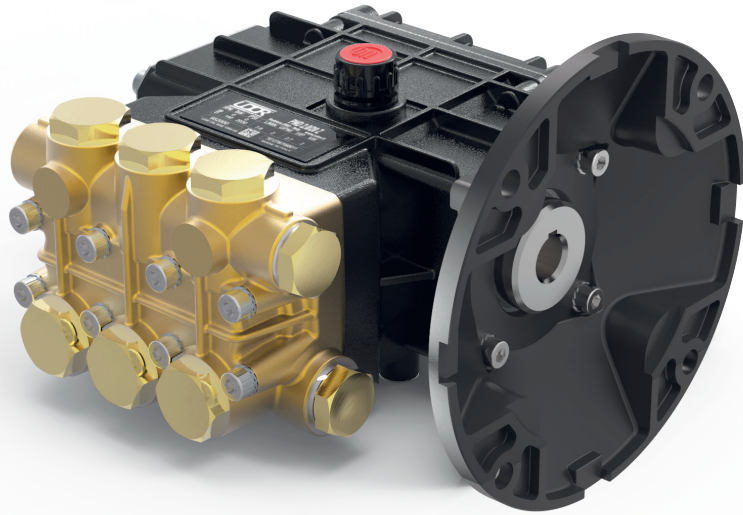


## Direct Drive, Electric Flange Models

5/8" Hollow Shaft with NEMA 56C Mounting Flange  
1750 RPM



- Brass Manifold
- Heat Treated Crankshaft
- Stainless Steel Piston Guides
- High Strength Aluminum Alloy or Bronze Connecting Rods
- Industrial Quality Ball Bearings and Needle Bearings
- Solid Ceramic Plungers
- Stainless Steel Check Valves
- Heavy Duty Flat Base High Pressure Seals
- Dual Oil Sight Gauges
- 10.25 oz. Capacity Vented Oil Bath Crank Case
- 3/8" BSP-F Inlet. 3/8" BSP-F Outlet
- Max Fluid Temp, 160°F

### PND Series 24mm Keyed Solid Shaft Plunger Pumps

PND Series standard duty plunger pumps include a wide range of models with flow rates from 0.5 to 4.0 GPM and pressures up to 2030 PSI.

Other drive options include 24mm solid shaft, gas engine flange, gas engine gear reduction and hydraulic motor flange.

Applications include general pressure cleaning, sewer jetting, vehicle wash equipment and fire fighting applications.

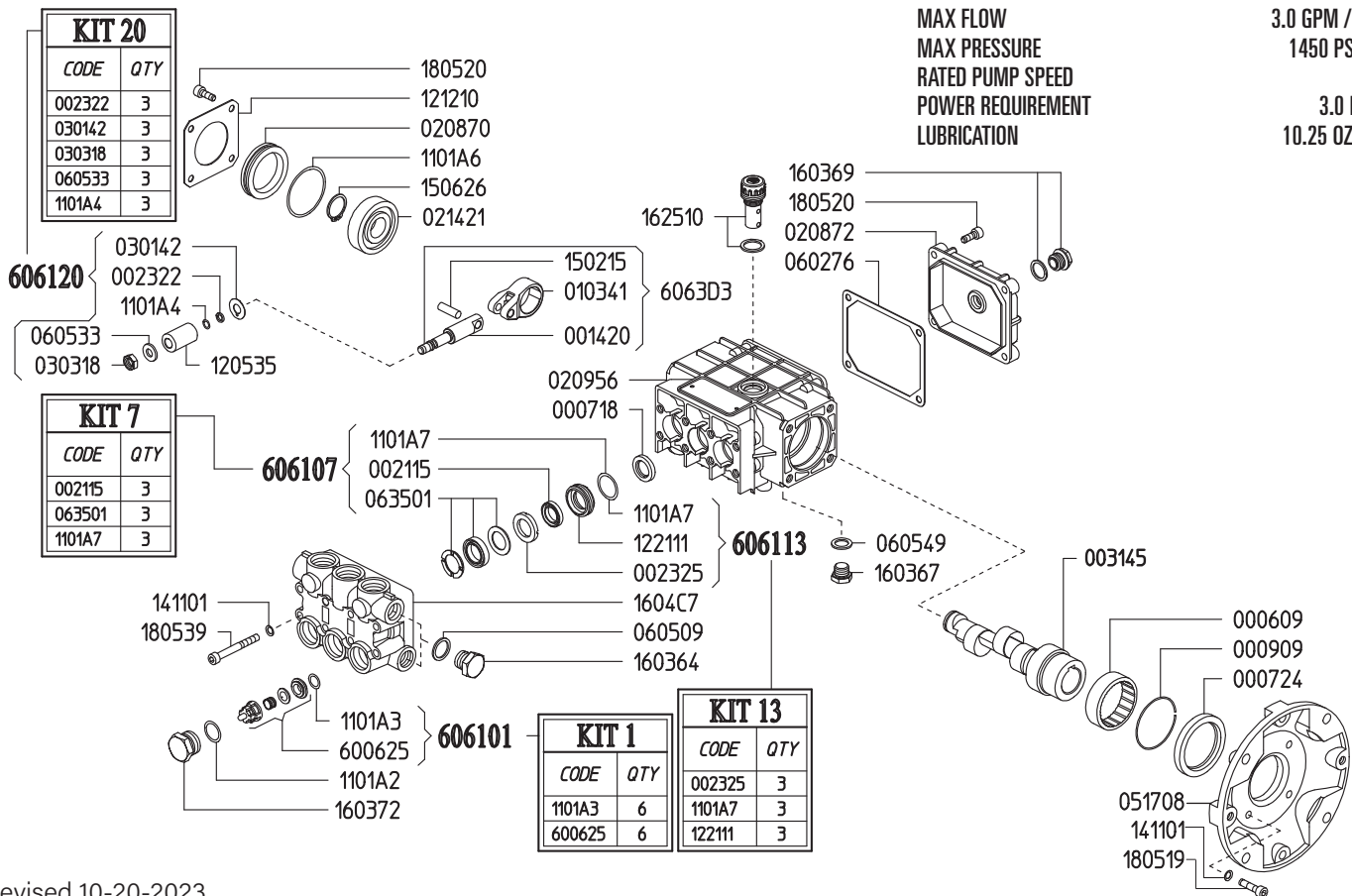
	Model	Flow		Pressure		Plunger Dia.	Crankshaft		Power	Seal Kit	Valve Kit	Wt.
		GPM	l/min	PSI	bar		Stroke	Code				
1750 RPM	PND 0.5/20 Z	0.5	2.0	2030	140	15mm	2.0mm	1	.75 EBHP	6061.07	6061.01	13 lbs
	PND 1.0/20 Z	1.0	3.8	2030	140	18mm	3.0mm	K	1.5 EBHP	6061.08	6061.01	13 lbs
	PND 1.5/20 Z	1.5	5.7	2030	140	15mm	7.5mm	H	2.0 EBHP	6061.07	6061.01	13 lbs
	PND 2.0/20 Z	2.0	7.6	2030	140	15mm	9.4mm	U	2.7 EBHP	6061.07	6061.01	13 lbs
	PND 3.0/15 ZA*	3.0	11.4	1450	100	15mm	12.5mm	S	3.0 EBHP	6061.07	6061.01	11 lbs
	PND 3.0/20 Z	3.0	11.4	2030	140	15mm	12.5mm	S	4.1 EBHP	6061.07	6061.01	13 lbs
	PND 4.0/15 Z	4.0	15.0	2030	140	18mm	12.5mm	S	4.0 EBHP	6061.08	6061.01	13 lbs

NOTE: All pump models available with left-hand drive option. Add 'L' to model number when ordering (ex. PND 1.5/20 ZL)  
\*Aluminum Manifold



3.0 GPM / 11.4 L/MIN  
 1450 PSI / 100 BAR  
 1750 RPM  
 3.0 HP ELECTRIC  
 10.25 OZ UDOR LUBE

MAX FLOW  
 MAX PRESSURE  
 RATED PUMP SPEED  
 POWER REQUIREMENT  
 LUBRICATION



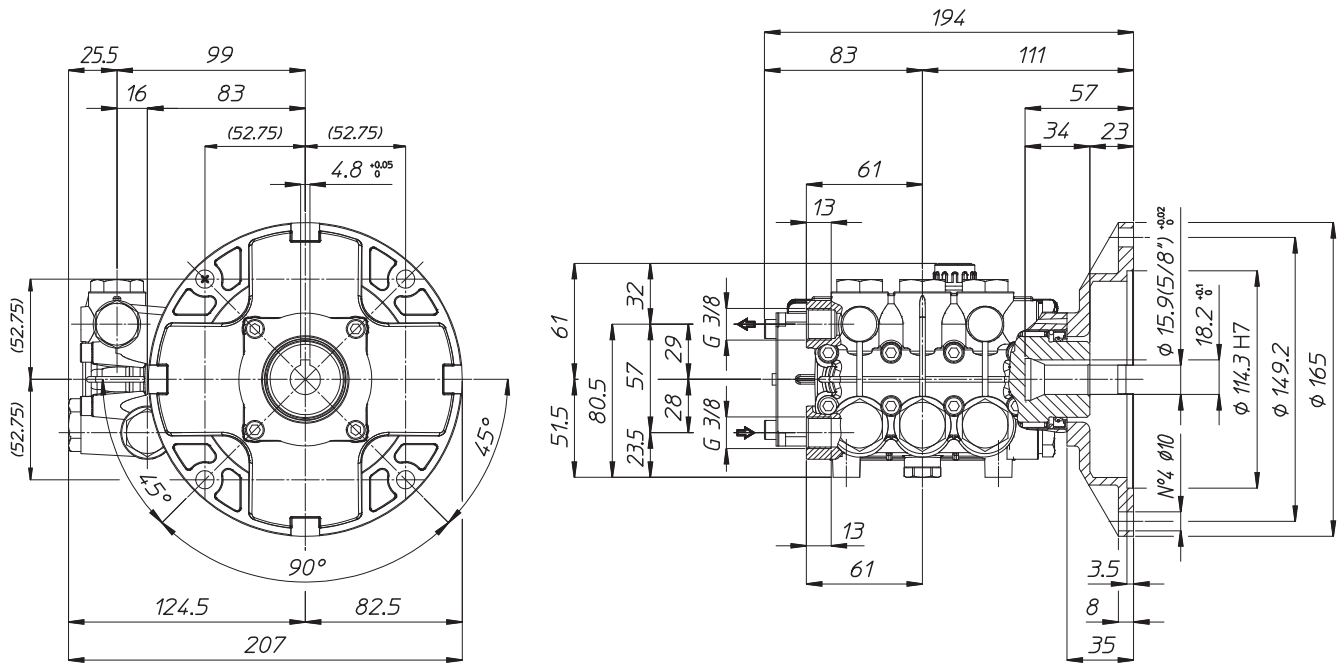
Revised 10-20-2023

Part #	Description	Qty	Part #	Description	Qty
0006.09	BUSHING D45X52X16 HK45-16	1	1101.A6	O-RING - BEARING COVER	1
0007.18	OIL SEAL D15X24X4	3	1101.A7	O-RING - LP SEAL RETAINER <sup>B C</sup>	3
0007.24	OIL SEAL D40X52X7	1	1205.35	CERAMIC PLUNGER D15X30 "PN"	3
0009.09	ELASTIC RING D52X2.5	1	1212.10	METAL COVER "PN"	1
0014.20	PLUNGER GUIDE D15/18 "PN"	3	1221.11	LOW PRESS. SEAL RETAINER D15 <sup>C</sup>	3
0021.15	WATER SEAL LP. D15 <sup>B</sup>	3	1411.01	SERATED WASHER D6	12
0023.22	RING D6.3X9X1.3 2021 "PN/C/G" <sup>C</sup>	3	1502.15	PIN D7X25.5	3
0023.25	INTERMEDIATE RING D15 "PN"	3	1506.26	SNAP RING D20	1
0031.45	HOLLOW SHAFT "PN" D5/8" ECC=5.25	1	1603.34	PLUG G1/4	1
0103.41	CONNECTING ROD "PN/PS"	3	1603.64	PLUG G3/8	1
0208.70	COVER "PN"	1	1603.69	OIL PLUG G1/4+GASKET	1
0208.72	BACK COVER "PN"	1	1603.72	VALVE PLUG "PN"PISTON D15/18 <sup>A</sup>	6
0209.F8	CRANKCASE "PN/PS"	1	1604.C7	HEAD "PN" PISTON D15/18 ALUMINUM	1
0214.21	BALL BEARING D20X52X15	1	1625.11	OIL PLUG G3/8 "PN"	1
0301.42	SLINGER RING "PN/PK/PKWT/PS" <sup>D</sup>	3	1805.19	ALLEN BOLT M6X25	4
0303.18	NUT "PN/PK/PKWT/PS M8XH5 <sup>D</sup>	3	1805.20	ALLEN BOLT M6X16	8
0517.08	ENGINE FLANGE "PN" NEMA 56H	1	1805.39	ALLEN BOLT M6X60	8
0602.76	BACK COVER GASKET "PN/PK/PW/PS	1	6006.25	VALVE ASSY "PN" W/O O-RING <sup>A</sup>	6
0605.09	GASKET D17X23X1.5 (G3/8)	1	6061.01	KIT 1 - VALVE KIT "PN/PW"	1
0605.33	GASKET D8X14X2 <sup>D</sup>	3	6061.07	KIT 7 - WATER SEAL KIT D15 "PN/PK"	1
0635.01	HIGH PRESS. SEAL ASSY D15 <sup>B</sup>	3	6061.13	KIT 13 - BRASS RING KIT D15 "PN"	1
1101.76	O-RING - OIL PLUG	1	6061.20	Kit 20 - PLUNGER KIT D15/18 "PN"	1
1101.A2	O-RING - VALVE CAP	6			
1101.A3	O-RING - VALVE <sup>A</sup>	6			
1101.A4	O-RING - PLUNGER <sup>D</sup>	3			

<sup>A</sup> Parts in 6061.01 (Kit 1).  
<sup>B</sup> Parts in 6061.07 (Kit 7).  
<sup>C</sup> Parts in 6061.13 (Kit 13).  
<sup>D</sup> Parts in 6061.20 (Kit 20).

*Dimensional Drawings are  
Shown in Millimeters.  
To Convert to Inches,  
Multiply Dimension x 0.03937*

## PN SERIES PUMPS - 5/8" HOLLOW SHAFT w/ NEMA 56C FLANGE



## TORQUE SPECS

Ref.	Description	Ft./lb.	Nm	Loctite®
1	Head Bolts	8	11	-
2	Valve Caps	75	100	243
3	Inlet Cap	60	80	-
4	Outlet Cap	60	80	243
5	Bearing Flange Bolts	8	11	-
6	Rear Cover Bolts	8	11	-
7	Connecting Rod Bolts	-	-	-
8	Plunger Bolts	11	15	270
9	Valve Cover Bolts	-	-	-
10	Oil Drain Plug	6	8	-

