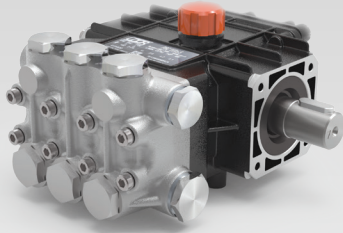




for Aggressive Environment Applications

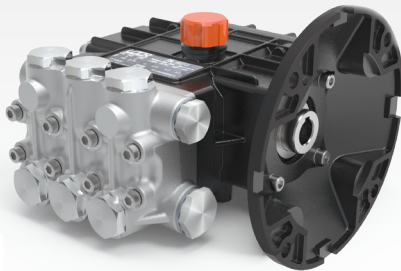


Scan this QR Code for more information

- 316 Stainless Steel Manifolds
- 316 Stainless Steel Valves
- 316 Stainless Steel Plunger Rods & Nuts
- 304 Stainless Steel Exterior Bolts
- Solid Ceramic Plungers
- 1/2" BSP-F Inlet. 3/8" BSP-F Outlet
- PTFE Style Packings
- 11.5 oz. Oil Capacity

PS Series Solid Shaft Models 24mm Keyed Solid Shaft

	Model	Flow		Pressure		Plunger Dia.	Crankshaft		Power	Seal Kit	Valve Kit	Wt.
		GPM	l/min	PSI	bar		Stroke	Code				
1450 RPM	PSC 06/15 S	1.5	5.7	2175	150	18mm	5.5mm	D	2.2 EBHP	6061.B1	6061.D7	13.5 lbs
	PSC 08/15 S	2.2	8.2	2175	150	18mm	8.0mm	4	3.3 EBHP	6061.B1	6061.D7	13.5 lbs
	PSC 11/15 S	2.9	11.0	2175	150	18mm	10.5mm	O	4.2 EBHP	6061.B1	6061.D7	13.5 lbs
	PSC 13/15 S	3.4	13.0	2175	150	18mm	12.5mm	S	5.0 EBHP	6061.B1	6061.D7	13.5 lbs

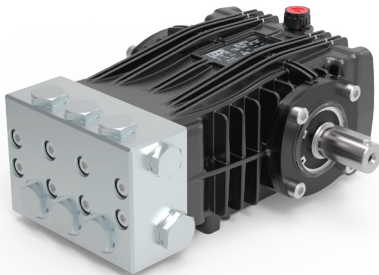


Scan this QR Code for more information

- 316 Stainless Steel Manifolds
- 316 Stainless Steel Valves
- 316 Stainless Steel Plunger Rods & Nuts
- 304 Stainless Steel Exterior Bolts
- Solid Ceramic Plungers
- 1/2" BSP-F Inlet. 3/8" BSP-F Outlet
- PTFE Style Packings
- 11.5 oz. Oil Capacity

PS Series Direct Drive, Electric Flange Models 5/8" Hollow Shaft with NEMA 56C Mounting Flange

	Model	Flow		Pressure		Plunger Dia.	Crankshaft		Power	Seal Kit	Valve Kit	Wt.
		GPM	l/min	PSI	bar		Stroke	Code				
1750 RPM	PSD 1.6/15 Z	1.6	6.2	1450	100	18mm	5.0mm	B	1.6 EBHP	6061.B1	6061.D7	14.5 lbs
	PSD 2.4/15 Z	2.4	9.0	1450	100	18mm	7.5mm	H	2.4 EBHP	6061.B1	6061.D7	14.5 lbs
	PSD 3.0/15 Z	3.0	11.5	1450	100	18mm	9.4mm	U	3.0 EBHP	6061.B1	6061.D7	14.5 lbs
	PSD 3.6/15 Z	3.6	13.5	1450	100	18mm	10.5mm	O	3.4 EBHP	6061.B1	6061.D7	14.5 lbs
	PSD 4.2/15 Z	4.2	16.0	1450	100	18mm	12.5mm	S	4.0 EBHP	6061.B1	6061.D7	14.5 lbs



Scan this QR Code for more information

- 316 Stainless Steel Manifolds
- 316 Stainless Steel Valves
- 316 Stainless Steel Plunger Rods & Nuts
- 304 Stainless Steel Exterior Bolts
- Solid Ceramic Plungers
- PTFE Style Packings
- 15.4 oz. Capacity Vented Oil Bath Crank Case
- 1/2" BSP-F Inlet. 3/8" BSP-F Outlet
- Max Fluid Temp, 160°F

BS Series Solid Shaft Models 24mm Keyed Solid Shaft

	Model	Flow		Pressure		Plunger Dia.	Crankshaft		Power	Seal Kit	Valve Kit	Wt.
		GPM	l/min	PSI	bar		Stroke	Code				
1450 RPM	BSC 15/20 S	4.0	15.0	2900	200	18mm	14.5mm	I	7.7 EBHP	6700.01	6930.01	26 lbs
	BSC 18/20 S	4.9	18.5	2900	200	18mm	18.0mm	9	9.5 EBHP	6700.01	6930.01	26 lbs
	BSC 21/20 S	5.5	21.0	2900	200	18mm	19.0mm	Y	10.8 EBHP	6700.01	6930.01	26 lbs

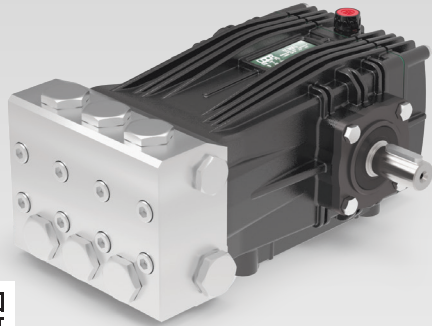
All Models available with Gas Engine Gear Reductions. Contact UDOR USA for pricing and availability.



STAINLESS STEEL PUMPS



for Aggressive Environment Applications



- 316 Stainless Steel Manifolds
- 316 Stainless Steel Valves
- 316 Stainless Steel Plunger Rods & Nuts
- 304 Stainless Steel Exterior Bolts
- Solid Ceramic Plungers
- PTFE Style Packings
- 34.5 oz. Capacity Vented Oil Bath Crank Case
- 3/4" BSP-F Inlet. 1/2" BSP-F Outlet - Below 10 GPM
- 1" BSP-F Inlet. 1/2" BSP-F Outlet - Over 10 GPM
- Max Fluid Temp, 160°F

CS Series

Solid Shaft Models

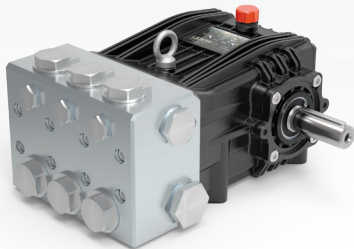
24mm Keyed Solid Shaft



Scan this QR Code for more information

	Model	Flow		Pressure		Plunger Dia.	Crankshaft		Power	Seal Kit	Valve Kit	Wt.
		GPM	l/min	PSI	bar		Stroke	Code				
1450 RPM	CSC 27/20 S	7.1	27.0	2900	200	28mm	11.0mm	P	13.8 EBHP	6061.C2	6061.B9	43 lbs
	CSC 34/20 S	9.0	34.0	2900	200	28mm	13.5mm	N	17.4 EBHP	6061.C2	6061.B9	43 lbs
	CSC 42/17 S	11.6	44.0	2465	170	28mm	17.0mm	X	19.5 EBHP	6061.C2	6061.B9	44 lbs
	CSC 50/15 S	13.2	50.0	2175	150	28mm	19.0mm	Y	19.5 EBHP	6061.C2	6061.B9	44 lbs

All Models available with Gas Engine Gear Reductions. Contact UDOR USA for pricing and availability.



- 316 Stainless Steel Manifolds
- 316 Stainless Steel Valves
- 316 Stainless Steel Plunger Rods & Nuts
- 304 Stainless Steel Exterior Bolts
- Solid Ceramic Plungers
- 1-1/4" BSP-F Inlet.
- 3/4" or 1" BSP-F Outlet.
- 57.6 oz. Oil Capacity
- Max Fluid Temp, 160°F

NKS Series

Solid Shaft Models

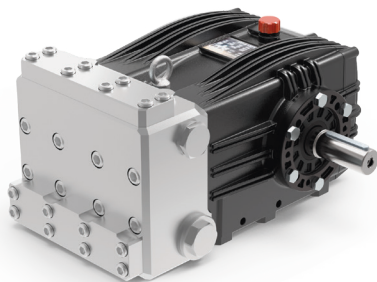
30mm Keyed Solid Shaft



Scan this QR Code for more information

	Model	Flow		Pressure		Plunger Dia.	Crankshaft		Power	Seal Kit	Valve Kit	Wt.
		GPM	l/min	PSI	bar		Stroke	Code				
1450 RPM	NKS-C 75/170 R	19.9	75.1	2465	170	28mm	30.0mm	F	32.8 EBHP	6061.I2	6061.M6	79.6 lbs
	NKS-C 85/170 R	22.5	85.2	2465	170	28mm	34.0mm	7	37.1 EBHP	6061.I2	6061.M6	79.6 lbs
	NKS-C 100/150 R	26.4	100.0	2175	150	30mm	34.0mm	7	38.4 EBHP	6072.O2	6930.O3	79.6 lbs
	NKS-C 145/100 R	37.8	143.0	1450	100	36mm	34.0mm	7	36.7 EBHP	6061.Q1	6930.O4	79.6 lbs

All Models available with Gas Engine Gear Reductions. Contact UDOR USA for pricing and availability.



- 316 Stainless Steel Manifolds
- 316 Stainless Steel Valves
- 316 Stainless Steel Plunger Rods & Nuts
- 304 Stainless Steel Exterior Bolts
- Solid Ceramic Plungers
- 128 oz. Capacity Vented Oil Bath Crank Case
- 1-1/2" BSP-F Inlet. 1" BSP-F Outlet
- Max Fluid Temp, 160°F

VXS Series

Solid Shaft Models

35mm Keyed Solid Shaft



Scan this QR Code for more information

	Model	Flow		Pressure		Plunger Dia.	Crankshaft		Power	Seal Kit	Valve Kit	Wt.
		GPM	l/min	PSI	bar		Stroke	Code				
1000 RPM	VXS-B 100/200 R	25.9	98.0	2900	200	32mm	42.0mm	8	50.3 EBHP	6061.B6	6061.Z2	150 lbs.
	VXS-B 130/160 R	32.8	124.0	2320	160	36mm	42.0mm	8	50.9 EBHP	6061.F1	6061.Z2	150 lbs.
	VXS-B 160/130 R	41.0	155.0	1885	130	40mm	42.0mm	8	51.7 EBHP	6061.F3	6061.Z2	150 lbs.