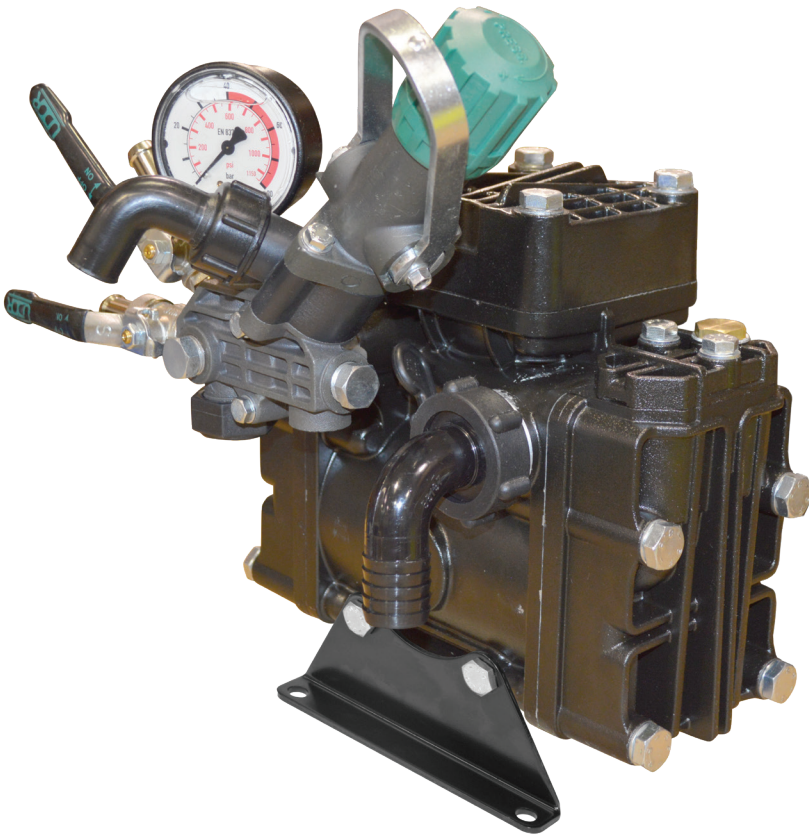


## 2-Cylinder, Medium-Pressure Diaphragm Pumps



DELTA 40 2-cylinder, medium pressure diaphragm pumps are internally manifolded with anodized aluminum construction and anodized aluminum and stainless steel liquid handling parts.

DELTA 40 pumps are excellent choices for various horticultural, agricultural, lawn care, nursery, pest control and turf spraying applications. They are also effectively used for aircraft de-icing, hydrostatic testing and cleaning applications.

| Model          | GPM  | l/min | PSI | bar | RPM | Drive Configuration   | Weight |
|----------------|------|-------|-----|-----|-----|---|--------|
| DELTA 40       | 10.5 | 40.0  | 560 | 40  | 550 | 25 mm Solid Keyed Shaft. Mounting Rails                           | 29 LBS |
| DELTA 40 TSFVA | 10.5 | 40.0  | 560 | 40  | 550 | 25 mm Solid Keyed Shaft x Universal VA Drive Face. Mounting Rails | 29 LBS |
| DELTA 40 GR3/4 | 10.5 | 40.0  | 560 | 40  | 550 | Gear Reduction for 3/4" Shaft Gas Engine, 4-6.5 HP                | 39 LBS |

| Specifications         | DELTA 40                 | Description               | Part #    |
|------------------------|--------------------------|---------------------------|-----------|
| Inlet Port             | 1" Hose Barb             | Diaphragm Kit (GREENTECH) | 6062.G4   |
| Outlet Ports           | (2) 1/2" Hose Barb       | Diaphragm Bolt/Washer Kit | 6062.B4   |
| Bypass                 | 3/4" Hose Barb           | Valve Kit                 | 6062.G3   |
| Piston Diameter        | 55mm                     | Regulator Repair Kit      | 6062.A9   |
| Crankshaft Stroke/Code | 15.0mm / T               | Complete Repair Kit       | 8700.85CK |
| Dimensions             | 10.5"L x 11.5"W x 10.5"H |                           |           |

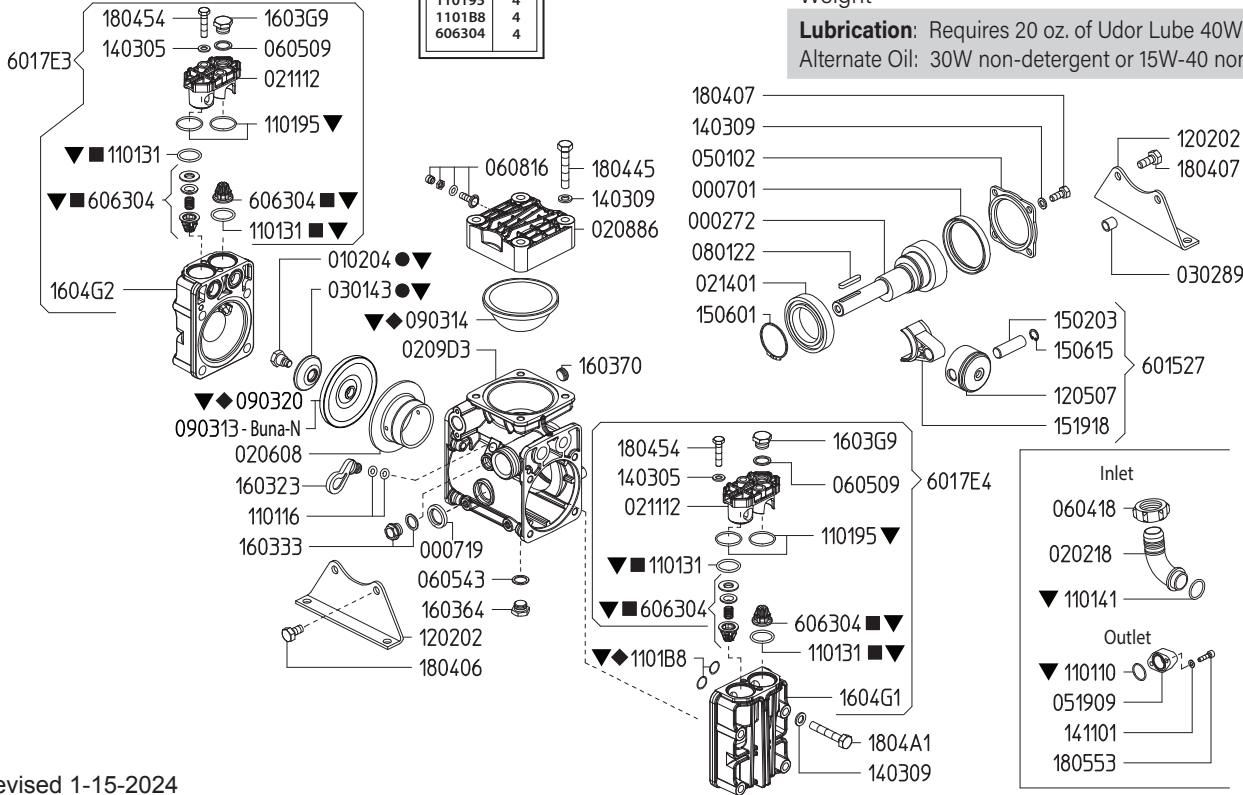
**Lubrication:** Requires 20 oz. of Udor Lube 40W Premium Pump Oil.  
Alternate Oil: 30W non-detergent or 15W-40 non-detergent oil.



| 6062B4<br>KIT 612 |     | 6062G3<br>KIT 663 |     | 6062G4<br>KIT 664 |     | 8700.85CK |     |
|-------------------|-----|-------------------|-----|-------------------|-----|-----------|-----|
| CODE              | QTY | CODE              | QTY | CODE              | QTY | CODE      | QTY |
| 010204            | 2   | 110131            | 4   | 090314            | 1   | 010204    | 2   |
| 030143            | 2   | 606304            | 4   | 090320            | 2   | 030143    | 2   |
|                   |     |                   |     | 1101B8            | 4   | 090320    | 2   |
|                   |     |                   |     |                   |     | 110131    | 4   |
|                   |     |                   |     |                   |     | 110141    | 1   |
|                   |     |                   |     |                   |     | 110195    | 4   |
|                   |     |                   |     |                   |     | 1101B8    | 4   |
|                   |     |                   |     |                   |     | 606304    | 4   |

|                                 |                          |
|---------------------------------|--------------------------|
| Maximum Flow                    | 10.5 GPM / 40 lpm        |
| Maximum Pressure                | 560 PSI / 40 bar         |
| Maximum RPM                     | 550 RPM                  |
| Inlet Port - Hose Barb          | 1" HB                    |
| Outlet Ports - Hose Barb, Valve | (2) 1/2" HB              |
| Bypass - Hose Barb              | 3/4" HB                  |
| Dimensions                      | 10.5"L x 11.5"W x 10.5"H |
| Weight                          | 29 lbs                   |

**Lubrication:** Requires 20 oz. of Udor Lube 40W Premium Pump Oil.  
Alternate Oil: 30W non-detergent or 15W-40 non-detergent oil.



Revised 1-15-2024

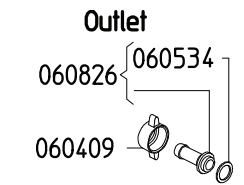
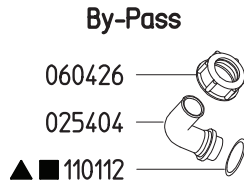
| Part #  | Description                        | Qty | Part #    | Description                           | Qty |
|---------|------------------------------------|-----|-----------|---------------------------------------|-----|
| 0002.72 | SHAFT "DELTA 40" TS FVA            | 1   | 1403.05   | WASHER M8                             | 4   |
| 0007.01 | OIL SEAL D78                       | 1   | 1403.09   | WASHER M10                            | 14  |
| 0007.19 | OIL SEAL D25                       | 1   | 1411.01   | SERATED WASHER M6                     | 2   |
| 0102.04 | DIAPHRAGM BOLT ●▼                  | 2   | 1502.03   | PIN D15X48                            | 2   |
| 0202.18 | HOSE BARB D25 ( 1" )               | 1   | 1506.01   | SNAP RING D60                         | 1   |
| 0206.08 | SLEEVE D55                         | 2   | 1506.15   | SNAP RING D15                         | 2   |
| 0209.D3 | CRANKCASE "DELTA 40/50" TS         | 1   | 1519.18   | CONNECTING ROD                        | 2   |
| 0211.12 | VALVE COVER                        | 2   | 1603.23   | OIL PLUG W/O O-RINGS                  | 1   |
| 0214.01 | DIAPHRAGM                          | 1   | 1603.33   | PLUG G3/8+GASKET                      | 1   |
| 0301.43 | DIAPHRAGM DISC ●▼                  | 2   | 1603.64   | PLUG G3/8                             | 1   |
| 0302.50 | ROD SPACER                         | 2   | 1603.G9   | HEAD PLUG 3/8                         | 2   |
| 0302.89 | SPACER                             | 2   | 1604.G1   | RIGHT HEAD                            | 1   |
| 0501.02 | FLANGE                             | 1   | 1604.G2   | LEFT HEAD                             | 1   |
| 0519.09 | REMOTE CONTROL FLANGE G1/2         | 1   | 1804.06   | HEX BOLT M10X20                       | 2   |
| 0604.18 | BARB NUT M42X2                     | 1   | 1804.07   | HEX BOLT M10X25                       | 4   |
| 0605.09 | GASKET D17                         | 2   | 1804.45   | HEX BOLT M10X60                       | 4   |
| 0605.43 | GASKET D17                         | 1   | 1804.54   | HEX BOLT M8X35                        | 4   |
| 0608.16 | AIR VALVE ASSEMBLY                 | 1   | 1804.A1   | HEX BOLT M10X70                       | 8   |
| 0801.22 | KEY A8X7X45                        | 1   | 1805.53   | ALLEN BOLT M6X22                      | 2   |
| 0903.13 | PISTON DIAPHRAGM D100 BUNA-N       | 2   | 6015.27   | ROD ASSEMBLY D55                      | 2   |
| 0903.14 | ACCUMULATOR DIAPHRAGM ◆▼           | 1   | 6017.E3   | HEAD ASSEMBLY - LEFT                  | 1   |
| 0903.20 | PISTON DIAPHRAGM D100 GREENTECH ◆▼ | 2   | 6017.E4   | HEAD ASSEMBLY - RIGHT                 | 1   |
| 1101.10 | O-RING - DISCHARGE PORT            | 1   | 6063.04   | VALVE ASSEMBLY W/O O-RING ■▼          | 4   |
| 1101.16 | O-RING - OIL PLUG                  | 2   | 6062.B4   | DIAPHRAGM BOLT / WASHER KIT (KIT 612) | 1   |
| 1101.31 | O-RING - VALVE ■▼                  | 4   | 6062.G3   | IN/OUTLET VALVE KIT (KIT 663)         | 1   |
| 1101.41 | O-RING - INLET HOSE BARB ▼         | 1   | 6062.G4   | DIAPHRAGM KIT - GREENTECH (KIT 664)   | 1   |
| 1101.95 | O-RING - VALVE COVER ▼             | 4   | 8700.85CK | COMPLETE REPAIR KIT                   | 1   |
| 1101.B8 | O-RING - HEAD ◆▼                   | 4   |           |                                       |     |
| 1202.02 | BASE PLATE                         | 2   |           |                                       |     |
| 1205.07 | ALUMINIUM PISTON D55               | 2   |           |                                       |     |

- Parts in 6062.B4 (Kit 612)
- Parts in 6062.G3 (Kit 663)
- ◆ Parts in 6062.G4 (Kit 664)
- ▼ Parts in 8700.85CK (Complete Repair Kit)

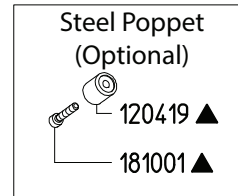
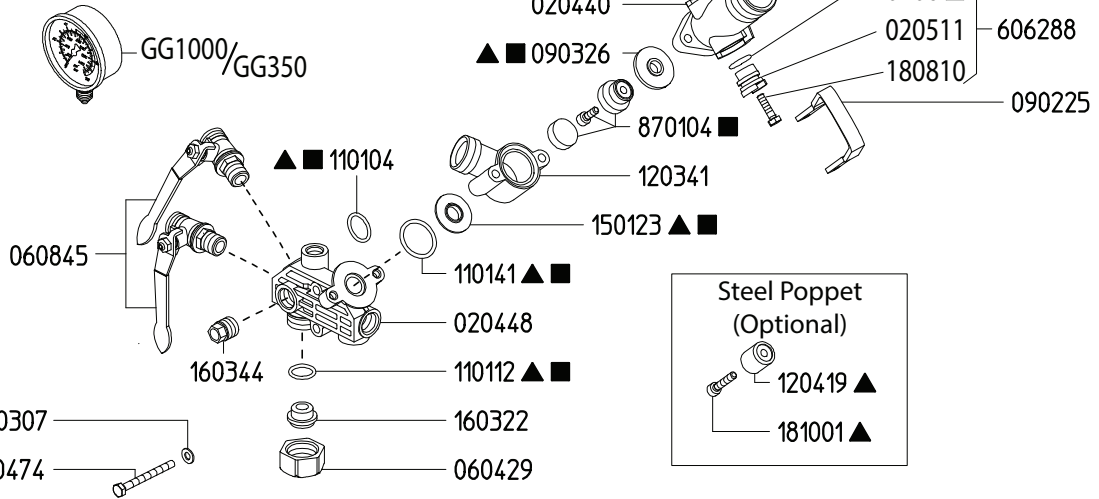
# 6010.24 & 6010.24/LP

## Pump Mounted Adjustable Pressure Regulators

| 606253     |     | 606255  |     |
|------------|-----|---------|-----|
| KIT 552    |     | KIT 554 |     |
| Optional ▲ |     | ■       |     |
| CODE       | QTY | CODE    | QTY |
| 090326     | 1   | 090326  | 1   |
| 110104     | 1   | 110104  | 1   |
| 110112     | 2   | 110106  | 2   |
| 110141     | 1   | 110112  | 2   |
| 120419     | 1   | 110141  | 1   |
| 150123     | 1   | 150123  | 1   |
| 181001     | 1   | 870104  | 1   |



|                                 |                  |                    |
|---------------------------------|------------------|--------------------|
| 6010.24                         | Maximum Flow     | 27.0 GPM / 102 lpm |
|                                 | Maximum Pressure | 560 PSI / 38 bar   |
| 6010.24/LP                      | Maximum Flow     | 27.0 GPM / 102 lpm |
|                                 | Maximum Pressure | 350 PSI / 24 bar   |
| Inlet Port - Hose Barb          |                  | -                  |
| Outlet Ports - Hose Barb, Valve |                  | (2) 1/2" HB        |
| Bypass - Hose Barb              |                  | 3/4" HB            |



Revised 1-15-2024

| Part #  | Description                            | Qty |
|---------|--|-----|
| 0202.25 | BYPASS HOSE BARB - STRAIGHT (OPTIONAL) | 1   |
| 0204.40 | VALVE BODY                             | 1   |
| 0204.48 | MAIN BODY                              | 1   |
| 0205.10 | VALVE CYLINDER                         | 1   |
| 0205.11 | VALVE CYLINDER CAM                     | 2   |
| 0254.04 | BYPASS HOSE BARB - ELBOW               | 1   |
| 0604.09 | DISCHARGE BARB NUT                     | 2   |
| 0604.26 | BYPASS BARB NUT                        | 1   |
| 0604.29 | BARB NUT                               | 1   |
| 0605.34 | GASKET                                 | 2   |
| 0608.26 | 1/2" HOSE BARB W/GASKET                | 2   |
| 0608.45 | BALL VALVE; RIGHT                      | 2   |
| 0901.24 | HIGH PRESSURE SPRING "6010.24"         | 1   |
| 0901.47 | LOW PRESSURE SPRING "6010.24/LP"       | 1   |
| 0902.25 | DUMP VALVE LEVER                       | 1   |
| 0903.26 | DIAPHRAGM ▲■                           | 1   |
| 1101.04 | O-RING ▲■                              | 1   |
| 1101.06 | O-RING ■                               | 2   |
| 1101.12 | O-RING ▲■                              | 2   |
| 1101.41 | O-RING ▲■                              | 1   |

| Part #  | Description                                  | Qty |
|---------|--|-----|
| 1203.41 | BODY   | 1   |
| 1204.19 | STEEL POPPET - OPTIONAL ▲                    | 1   |
| 1403.06 | WASHER                                       | 1   |
| 1403.07 | WASHER                                       | 4   |
| 1501.23 | SEAT ▲■                                      | 1   |
| 1603.22 | PLUG   | 1   |
| 1603.44 | PLUG   | 2   |
| 1801.17 | ADJUSTMENT KNOB                              | 1   |
| 1804.74 | BOLT   | 4   |
| 1808.10 | BOLT   | 2   |
| 1810.01 | STAINLESS STEEL BOLT - OPTIONAL ▲            | 1   |
| 6062.88 | REGULATOR CAM KIT                            | 2   |
| 8701.04 | URETHANE POPPET ASSEMBLY ■                   | 1   |
| GG1000  | HIGH PRESSURE GAUGE - 1000 PSI "6010.24"     | 1   |
| GG350   | LOW PRESSURE GAUGE - 350 PSI "6010.24/LP"    | 1   |
| 6062.53 | REPAIR KIT - STEEL POPPET (KIT 552) OPTIONAL | 1   |
| 6062.55 | REPAIR KIT - 6010.24/LP (KIT 554)            | 1   |

▲ Parts Included in Repair Kit 6062.53 (KIT 552)

■ Parts Included in Repair Kit 6062.55 (KIT 554)

1. Before operating or re-operating the pump, push the manual dump valve lever (0902.25) down, so the pump will start at zero pressure. FAILURE TO DO SO WILL VOID PUMP WARRANTY.
2. Turn pressure adjustment knob (1801.17) counterclockwise to relieve spring tension. NOTE: Step 2 applies only to initial start-up, and is not necessary in daily operation of pump.
3. Start unit and let run until air is evacuated from system, when only liquid is expelled from the bypass line.
4. Return dump valve lever to the UP position. Open spray gun or spray boom and turn the pressure adjustment knob (1801.17) clockwise until desired operating pressure is achieved.

All Dimensions are WITHOUT Control Unit or Regulator

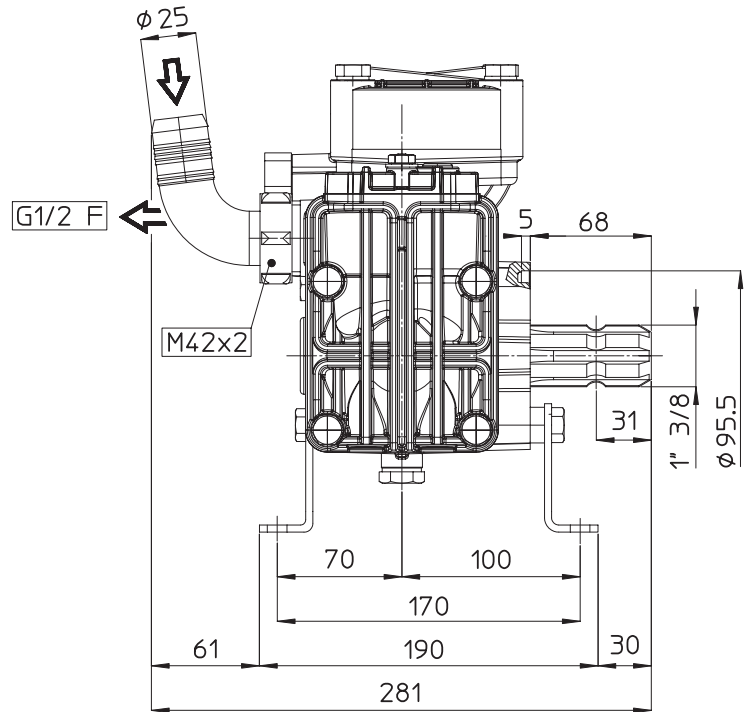
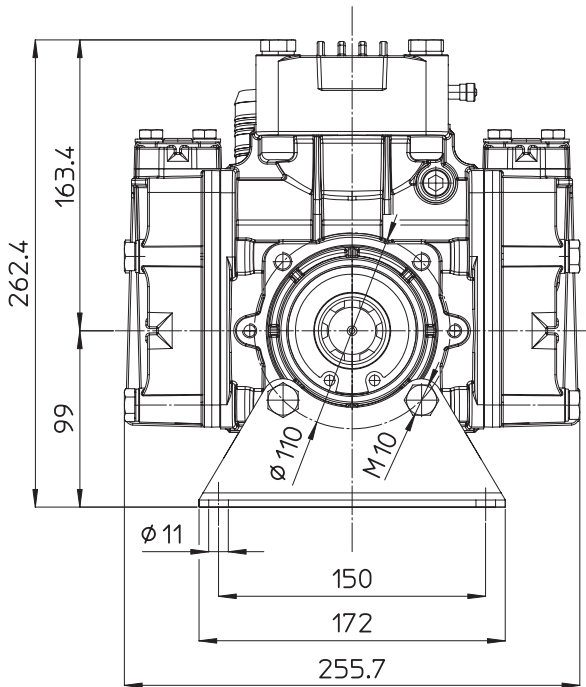
Dimensional Drawings are Shown in Millimeters. To Convert to Inches, Multiply Dimension x 0.03937

### Specifications

### DELTA 40

|                          |                              |
|--------------------------|------------------------------|
| Inlet Port - Hose Barb   | 1" HB                        |
| Outlet Ports - Hose Barb | (2) 1/2" HB                  |
| Bypass - Hose Barb       | 3/4" HB                      |
| Dimensions               | 10.5"L x 11.5"W x 10.5"H     |
| Diaphragm Material       | GREENTECH (Std) Buna-N (Opt) |

**Lubrication:** Requires 20 oz. of Udor Lube 40W Premium Pump Oil. Alternate Oil: 30W non-detergent or 15W-40 non-detergent oil.



## TORQUE SPECS

| Ref. | Description                       | Ft./lb. | Nm |
|------|-----------------------------------|---------|----|
| 1    | Diaphragm Bolts (Use Loctite 243) | 18      | 25 |
| 2    | Head Bolts                        | 30      | 40 |
| 3    | Pulsation Dampener Bolts          | 20      | 28 |
| 4    | Inlet Flange Bolts                | -       | -  |
| 5    | Bearing Flange Bolts              | 25      | 34 |
| 6    | Oil Cup Bolts                     | -       | -  |
| 7    | Valve Cover Bolts                 | -       | -  |

