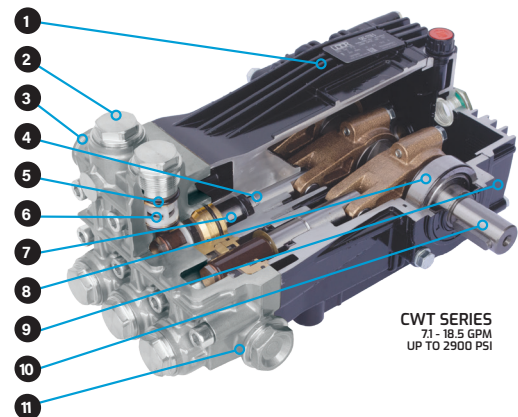
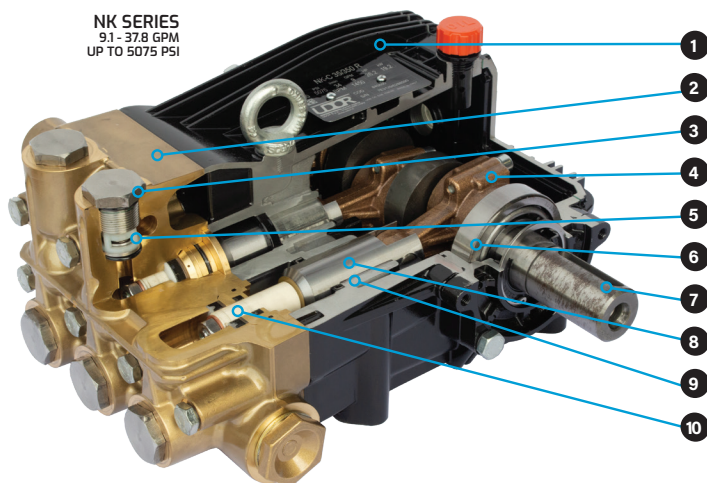


# Plunger Pumps for Car Wash Applications



- 1 Anodized Die-Cast Aluminum Crankcase
- 2 Large Diameter Stainless Steel Valve Caps with Increased Thread Depth
- 3 Heavy Duty Nickel Plated Brass Manifold
- 4 Stainless Steel Stepped Plunger Guide for Increased Seal Life
- 5 Bottom Mount O-Ring and Back-Up Ring to Prevent Thread Damage
- 6 Stainless Steel Conical Valve Assembly for Increased Efficiency
- 7 High-Polished Solid Ceramic Plungers
- 8 Heavy Duty Tapered Roller Bearings
- 9 Deeper Back Cover for Increased Oil Capacity
- 10 Heat Treated Crankshaft
- 11 Reinforcing Ring on Inlet and Discharge Ports



- 1 Anodized Die-Cast Aluminum Crankcase
- 2 Heavy Duty Brass Manifold with Internal and External Bracing
- 3 Large Diameter Valve Caps with 1-Piece Cover Plate
- 4 Heavy Duty Bronze Connecting Rods
- 5 Stainless Steel Conical Valve Assembly for Increased Efficiency
- 6 Heavy Duty Tapered Roller Bearings
- 7 Heat Treated Crank Shaft
- 8 Stainless Steel Stepped Plunger Guide for Increased Seal Life
- 9 Replaceable PTFE Coated Body Guides
- 10 High-Polished Solid Ceramic Plungers



**UDOR**<sup>®</sup>  
**USA**  
World Leader in Diaphragm and Plunger Pumps

An **UDOR** Brand  
**BOOMINATOR**<sup>®</sup>  
BOOMLESS SPRAY NOZZLES

6180 140th Avenue NW  
Ramsey, MN 55303

Ph: 651-785-0666  
Fax: 800-732-2670

[www.udorusa.com](http://www.udorusa.com)  
[www.boominator.com](http://www.boominator.com)  
[info@udorusa.com](mailto:info@udorusa.com)

Scan this QR Code  
to Visit [www.udorusa.com](http://www.udorusa.com)



**FLYER**  
**CW224B**





# **UDOR<sup>®</sup>**

**USA**

*World Leader in Diaphragm and Plunger Pumps*



**Car Wash Equipment & Applications**  
**Plunger Pumps and Accessories**





# Industrial Duty Plunger Pumps

## Pumps for Car Wash Applications

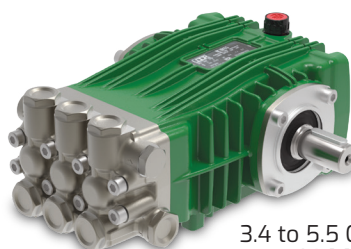
Designed and engineered to handle the toughest applications. From smaller self-service bays to large tunnel or roll-over car washes, UDOR USA offers the pumps and drive options to meet your specific needs.

With features like anodized die-cast aluminum crankcases, plated brass or stainless steel manifolds, stainless steel conical valve assemblies, tapered roller bearings, heat treated crank shafts, high temperature seals and high-polished solid ceramic plungers, our pumps will provide the service life you've come to expect from UDOR USA.

Your company depends on providing a quality product that will withstand the harshest conditions. Designed and built in our factory in Italy, UDOR USA's complete line of industrial duty pumps not only meets your needs today, but they provide solutions that help your company grow tomorrow.



### BCW SERIES - CAR WASH PUMPS ▼

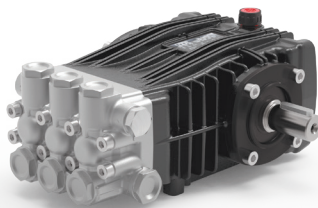


3.4 to 5.5 GPM  
Up to 2900 PSI  
24mm Male Solid Shaft  
1450 RPM  
Nickel Plated Manifold &  
Stainless Steel Valve Caps  
HNBR Seals. 170°F Max

#### ChemWall Seal Advantages:

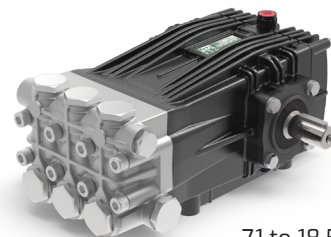
- Special coated stainless steel shell.
- Rigid design resists collapsing due to chemical and high temperature exposure.
- Greater resistance to aggressive chemicals including wheel cleaner concentrates.
- Longer Seal Life - Up to 10x times that of standard seals, reducing maintenance and down time.

### BWT SERIES ▼



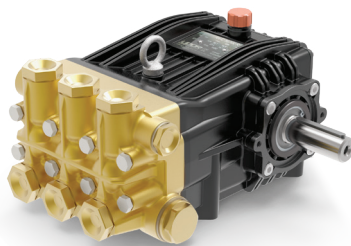
4.0 to 5.5 GPM  
Up to 2900 PSI  
24mm Male Solid Shaft  
1450 RPM  
Nickel Plated Manifold &  
Stainless Steel Valve Caps  
PTFE High Temp. Seals. 185°F Max

### CWT SERIES ▼



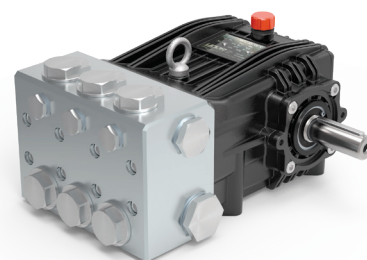
7.1 to 18.5 GPM  
Up to 2900 PSI  
24mm Male Solid Shaft  
1450 RPM  
Nickel Plated Manifold &  
Stainless Steel Valve Caps  
PTFE High Temp. Seals. 185°F Max

### NK SERIES ▼



9.1 to 37.8 GPM  
Up to 5075 PSI  
30mm Solid Keyed Shaft  
1450 & 1750 RPM  
Also Available with  
MI Hydraulic Drive Flange

### NKS SERIES ▼



19.9 to 37.8 GPM  
Up to 2465 PSI  
30mm Solid Keyed Shaft  
1450 RPM  
Stainless Steel Manifold,  
Valves and Bolts. PTFE Seals.

## UNLOADERS and RELIEF VALVES ▼



**UD7100**  
10.5 GPM @ 1500 PSI  
3/8" F Inlet  
3/8" F Outlet  
3/8" F Bypass



**UB150SS**  
21.0 GPM @ 2320 PSI  
1/2" F Inlet  
1/2" F Outlet  
1/2" F Bypass



**UD600F**  
53.0 GPM @ 2610 PSI  
3/8" F Inlet  
1/2" F Bypass



**UD555SS**  
7.0 GPM @ 2000 PSI  
3/8" M Inlet  
3/8" F Bypass  
Stainless Steel

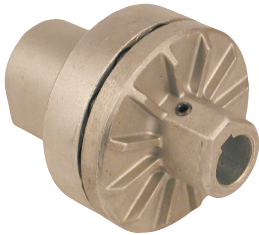


**UD550**  
7.0 GPM @ 1000 PSI  
3/8" M Inlet  
3/8" F Bypass

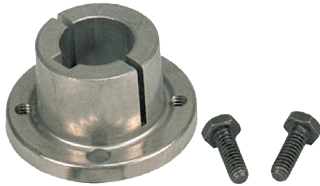


**UD555FT**  
7.0 GPM @ 2000 PSI  
3/8" F Inlet  
3/8" F Outlet  
3/8" F Bypass

## DRIVE COMPONENTS ▼



**O632.29 / O632.30**  
Electric Motor Drive Couplers  
Couple 24mm Pump Shaft  
to 1-1/8" or 1-3/8" Shaft  
Electric Motors



**10H24 / 10H30**  
Pulley Bushings  
Mount Belt Drive Pulleys  
to 24mm or 30mm  
Pump Shafts



**O210.12**  
Electric Motor Flange  
Mount NEMA 182/184 TC Flanged  
Electric Motors to B & BK Series  
Pumps with Drive Coupler



**O210.14**  
Electric Motor Flange  
Mount NEMA 213/215 Flanged Electric  
Motors to B, BK, C & CK Series Pumps  
with Drive Coupler

## PUMP RAIL KITS ▼



UDOR USA offers a variety of pump rail kits to fit your mounting configuration.

## SPRAY GUNS ▼



UDOR USA offers many spray gun options to fit your specific car wash application.

## GAUGES ▼



UDOR USA offers pressure gauges in stem and back mount configurations up to 4000 psi.

Gauge port valve caps are also available to simplify your plumbing design.

## INLET FILTERS ▼



### POLYPROPYLENE INLET FILTERS

- 1", 1-1/4" and 1-1/2" Models
- 32 Mesh - for Plunger Pump Applications
- 16 Mesh - for Diaphragm Pump Applications

## PUMP LUBRICATION ▼



### UDOR LUBE / UDOR LUBE SYNTHETIC

SAE 40W non-detergent lubricant. Specially formulated for use in Udor diaphragm & plunger pumps.

- Non-Detergent. Non-Foaming
- Rust Inhibitors
- Anti-wear Agents
- Resists Breakdown Due to Oxidation
- Synthetic Oil Recommended for Cold Weather Uses