



BETA 195

4-Cylinder, High-Pressure Diaphragm Pumps with 4900.10 - VRG 260 Regulator



BETA-195 4-cylinder, high pressure, high volume diaphragm pumps are constructed of anodized aluminum, brass and stainless steel and have anodized aluminum, brass and stainless steel liquid handling parts. Includes mounting rails and 6005.08 control unit with pressure gauge. Simplicity of design and common parts allow for easy and economical maintenance.

BETA-195 pumps are excellent choices for various horticultural and agricultural spraying applications.

Model	GPM	l/min	PSI	bar	RPM	Drive Configuration	Weight
BETA 195 TS2C	51.0	193.0	725	50	550	1-3/8" 6-Spline Male PTO Thru-Shaft	130 LBS

Specifications	BETA 195	Description	Part #
Inlet Port	2" Hose Barb	Diaphragm Kit (GREENTECH)	8700.07
Outlet Ports	(3) 1/2" Hose Barb, 3/4" NPT	Diaphragm Bolt / Washer Kit	6640.03
Bypass	1" Hose Barb	Valve Kit	6062.E1
Piston Diameter	75mm	Regulator Repair Kit	6062.54
Crankshaft Stroke/Code	19.0mm / U		
Dimensions	16"L x 15.5"W x 12.6"H		

Lubrication: Requires 91 oz. of Udor Lube 40W Premium Pump Oil.
Alternate Oil: 30W non-detergent or 15W-40 non-detergent oil.



**World Leader in
Diaphragm and Plunger Pumps**

6180 140th Avenue NW
Ramsey, MN 55303

Ph: 651-785-0666
Fax: 800-732-2670

www.udorusa.com
sales@udorusa.com

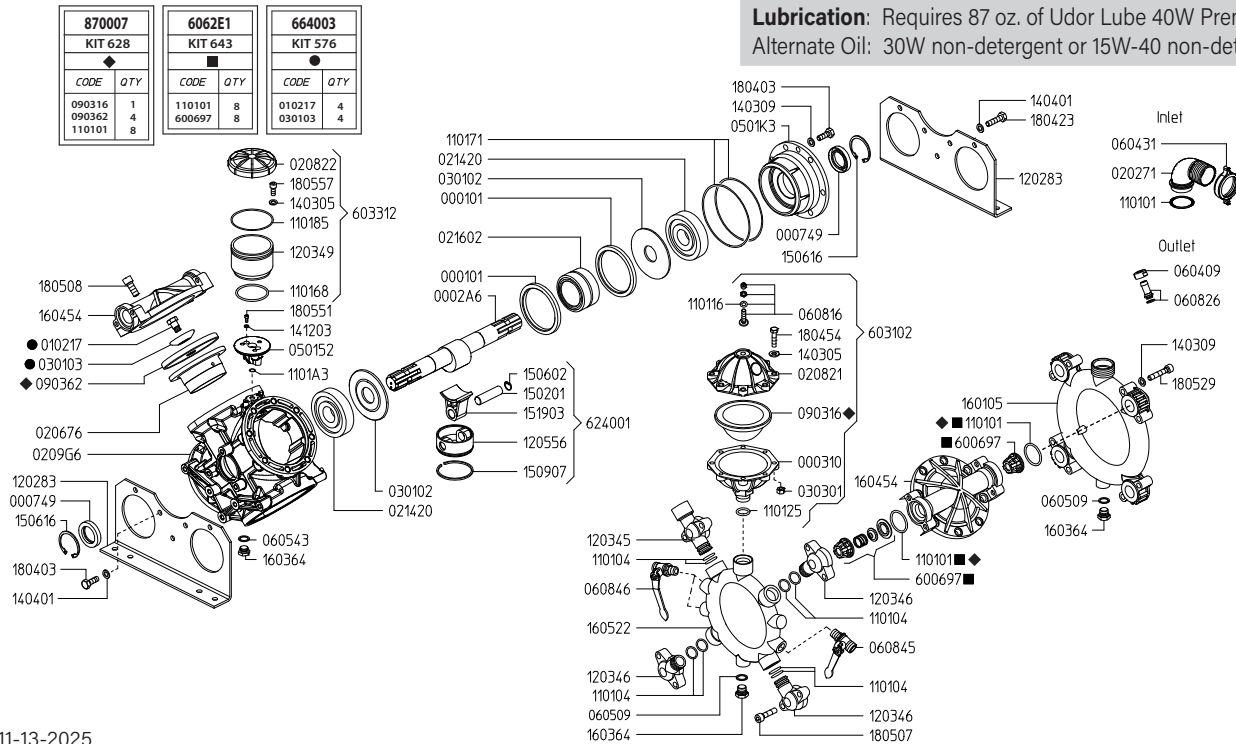


Scan this QR Code
for More Information

**B195
2025B**

Maximum Flow	51.0 GPM / 193 lpm
Maximum Pressure	725 PSI / 50 bar
Maximum RPM	550 RPM
Inlet Port	2" Hose Barb
Outlet Ports	(3) 1/2" Hose Barb Valve, 3/4" FPT
Bypass	1" Hose Barb
Dimensions	16"L x 15.5"W x 12.6"H
Weight	130 lbs

Lubrication: Requires 87 oz. of Udor Lube 40W Premium Pump Oil.
Alternate Oil: 30W non-detergent or 15W-40 non-detergent oil.



Revised 11-13-2025

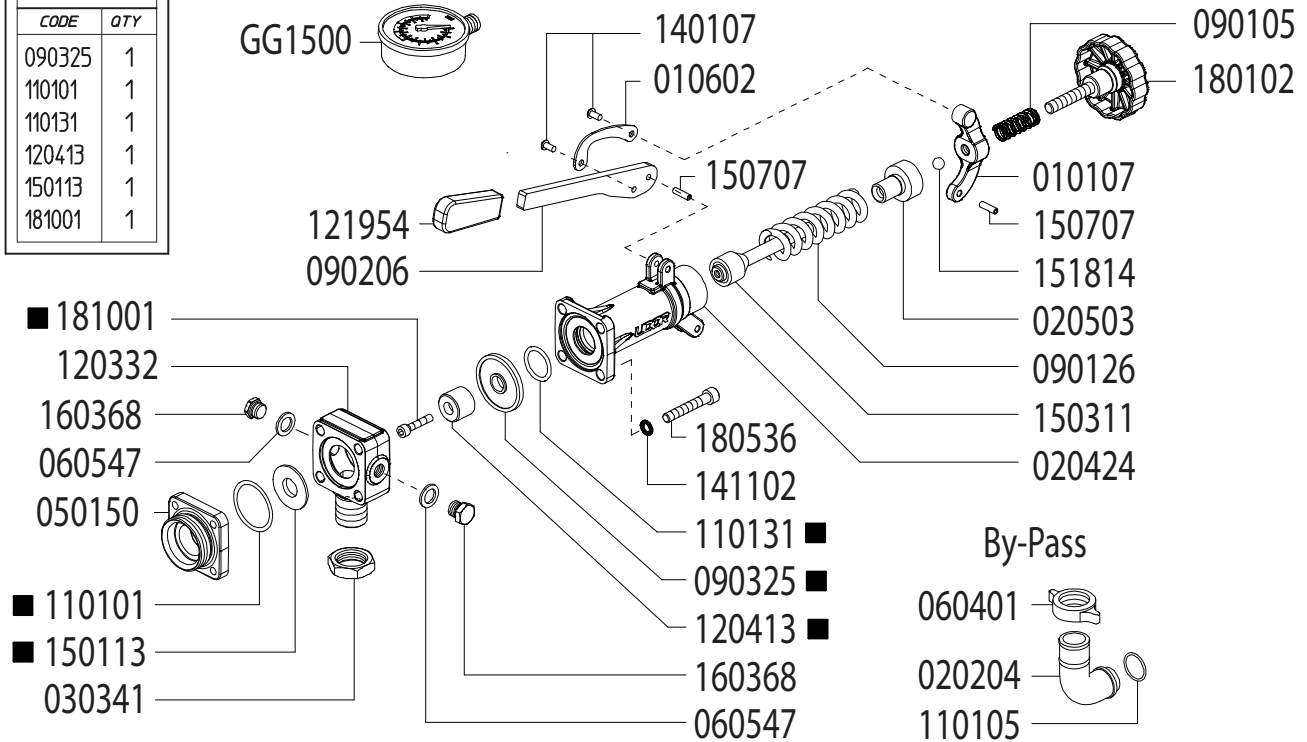
Part #	Description	Qty	Part #	Description	Qty
0001.01	RETAINER RING "BETA/OMEGA"	2	1203.46	OUTLET ELBOW "BETA"	3
0002.A6	CRANKSHAFT	1	1203.49	OIL RESERVOIR "BETA"	1
0003.10	PRESSURE ACCUMULATOR BASE	1	1205.56	ALUMINUM PISTON	4
0007.49	OIL SEAL D35	2	1403.05	WASHER M8	11
0102.07	DIAPHRAGM BOLT ●	4	1403.09	WASHER M10	12
0202.71	HOSE BARB ELBOW - INLET	1	1404.01	WASHER	10
0206.76	SLEEVE	4	1412.03	BONDED WASHER D6.7	2
0208.21	PRESSURE ACCUMULATOR COVER	1	1502.01	PIN D18X64	4
0208.22	OIL RESERVOIR COVER	1	1506.02	SNAP RING D18	4
0209.G6	CRANKCASE "BETA/OMEGA"	1	1506.16	SNAP RING D55	2
0214.20	BALL BEARING	2	1509.07	PISTON RING	4
0216.02	ROLLER BEARING	1	1519.03	CONNECTING ROD	4
0301.02	ROD DISC "BETA/OMEGA"	2	1601.05	MANIFOLD - SUCTION	1
0301.03	DIAPHRAGM WASHER ●	4	1603.64	PLUG G3/8	3
0303.01	HEX NUT M8X8	8	1604.54	HEAD "BETA 110/150/195/200/240"	4
0501.52	OIL CUP SUPPORT FLANGE "BETA / OMEGA"	1	1605.22	MANIFOLD - DISCHARGE	1
0501.K3	BEARING FLANGE	1	1804.03	HEX BOLT M10X30	13
0604.09	BRASS NUT G1/2	3	1804.23	HEX BOLT M10X40	5
0604.31	NUT - INLET HOSE BARB	1	1804.54	HEX BOLT M12X50	8
0605.09	GASKET	2	1805.07	ALLEN BOLT M10X40	8
0605.43	GASKET D17	1	1805.08	ALLEN BOLT M12X30	32
0608.16	AIR VALVE ASSY	1	1805.29	ALLEN BOLT	8
0608.26	HOSE BARB D13+GASKET	3	1805.51	ALLEN BOLT M6X40	2
0608.45	BALL VALVE RIGHT	1	1805.57	ALLEN BOLT M8X22	3
0608.46	BALL VALVE LEFT	2	6006.97	VALVE ASSEMBLY W/O O-RING ■	8
0903.16	ACCUMULATOR DIAPHRAGM ◆	1	6031.02	ACCUMULATOR ASSEMBLY	1
0903.62	PISTON DIAPHRAGM 130MM GREENTECH ◆	4	6033.12	OIL RESERVOIR ASSEMBLY	1
1101.01	O-RING - VALVE ■◆	8	6240.01	ROD ASSEMBLY "BETA 195"	4
1101.01	O-RING - INLET BARB	1	6062.E1	IN/OUTLET VALVE KIT "BETA 150" (KIT 643)	1
1101.04	O-RING - DISCHARGE ELBOWS	8	6640.03	DIAPHRAGM BOLT KIT (KIT 576)	1
1101.16	O-RING	1	8700.07	DIAPHRAGM KIT 130MM GREENTECH (KIT 628)	1
1101.25	O-RING - PRESSURE ACCUMULATOR	1			
1101.68	O-RING - OIL RESERVOIR	1			
1101.71	O-RING - BEARING FLANGE	2			
1101.85	O-RING - OIL RESERVOIR	1			
1101.A3	O-RING - OIL CUP SUPPORT FLANGE	1			
1202.83	BASE PLATE "BETA 195"	2			
1203.45	OUTLET ELBOW "BETA"	1			

- Parts in 6062.E1 (Kit 643)
- Parts in 6640.03 (Kit 576)
- ◆ Parts in 8700.07 (Kit 628)

Adjustable Pressure Regulator

Maximum Flow	66.0 GPM / 250 lpm
Maximum Pressure	1470 PSI /100 bar
Inlet Port	3/4" Male BSP
Outlet Ports	-
Bypass - Hose Barb	1-1/2" HB

606254	
KIT 553	
■	
<i>CODE</i>	<i>QTY</i>
090325	1
110101	1
110131	1
120413	1
150113	1
181001	1



Revised 10-9-2025

Part #	Description	Qty
0101.07	LEVER GUIDE	1
0106.02	PRESSURE BAIL	1
0202.84	1-1/2" BRASS ELBOW HOSE BARB	1
0204.24	VALVE BODY	1
0205.03	VALVE CYLINDER	1
0303.41	NUT	1
0501.50	FLANGE	1
0604.01	BARB NUT	1
0605.47	GASKET D8	1
0901.05	SPRING	1
0901.26	SPRING	1
0902.06	HANDLE	1
0903.25	DIAPHRAGM	1
1101.01	O-RING - BYPASS FLANGE	1
1101.31	O-RING - VALVE BODY	1
1101.77	O-RING - BYPASS HOSE BARB	1
1203.32	INLET ELBOW - 3/4" MALE BSP	1

Part #	Description	Qty
1204.13	POPPET	1
1219.54	HANDLE COVER - RUBBER	1
1401.07	RIVET	2
1411.02	WASHER	4
1501.13	SEAT	1
1503.11	REGULATOR STEM	1
1507.07	PIN	2
1518.14	BALL	1
1603.68	PLUG - 1/4" BRASS	1
1801.02	ADJUSTMENT KNOB	1
1805.36	BOLT	4
1810.01	BOLT - STAINLESS STEEL	1
GG1500	HIGH PRESSURE GAUGE (OPTIONAL)	1
6062.54	REPAIR KIT (KIT 553)	

■ Parts Included in Repair Kit #6062.54 (KIT 553)

OPERATING INSTRUCTIONS

1. Before operating or re-operating pump, lift R.V. Handle (0902.05) so pump will start at zero pressure.
FAILURE TO DO SO WILL VOID PUMP WARRANTY.
2. Turn Pressure Adjustment Knob (1801.02) counter-clockwise to relieve spring tension. (Step 2 is only necessary on initial start-up and is not necessary for daily operation.)
3. Start unit and let run until air is evacuated from system, when only liquid is expelled from the bypass line.
4. Return R.V. Handle (0902.05) to down position. Open spray gun or spray boom and turn adjustment knob (1801.02) clockwise until desired operating pressure is achieved.

All Dimensions are WITHOUT Control Unit or Regulator

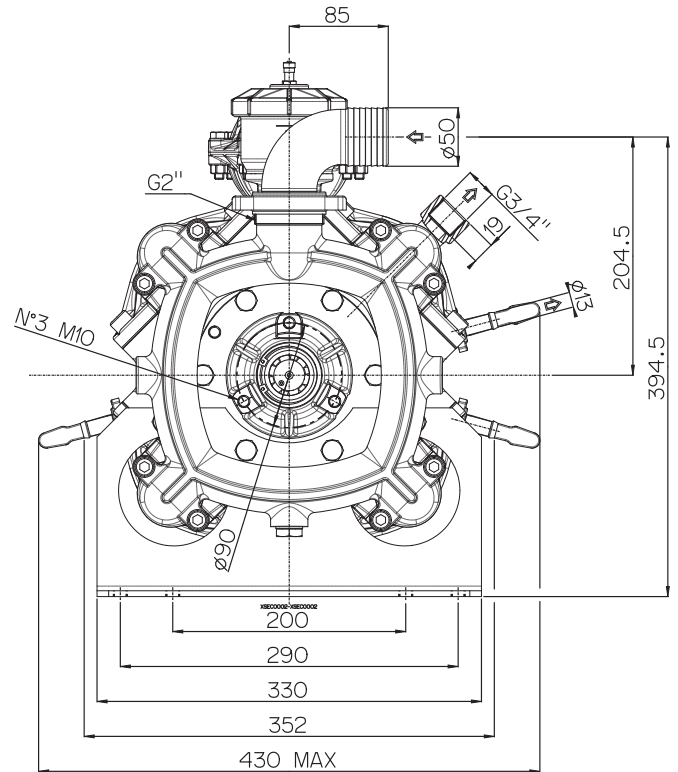
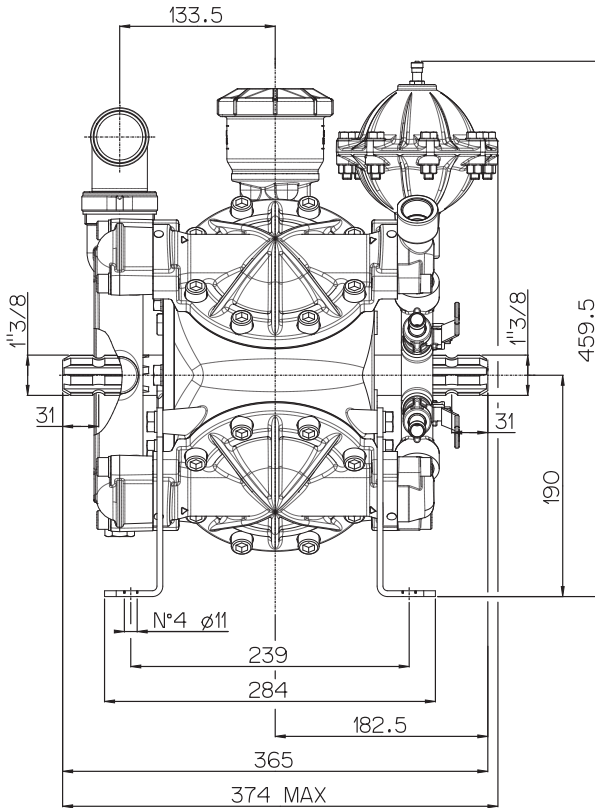
Dimensional Drawings are Shown in Millimeters. To Convert to Inches, Multiply Dimension x 0.03937

Specifications

BETA 195

Inlet Port - Hose Barb	2" HB
Outlet Ports - Hose Barb	(2) 1/2" HB
Bypass - Hose Barb	1" HB
Dimensions	16"L x 15.5"W x 12.6"H
Diaphragm Material	GREENTECH (Standard)

Lubrication: Requires 91 oz. of Udor Lube 40W Premium Pump Oil.
Alternate Oil: 30W non-detergent or 15W-40 non-detergent oil.



TORQUE SPECS

Ref.	Description	Ft./lb.	Nm
1	Diaphragm Bolts (Use Loctite 243)	22	30
2	Head Bolts	37	50
3	Pulsation Dampener Bolts	20	28
4	Bearing Flange Bolts	25	34
5	Oil Cup Bolts	7	10
6	Manifold Bolts - Aluminum/Brass	22	30

