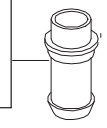
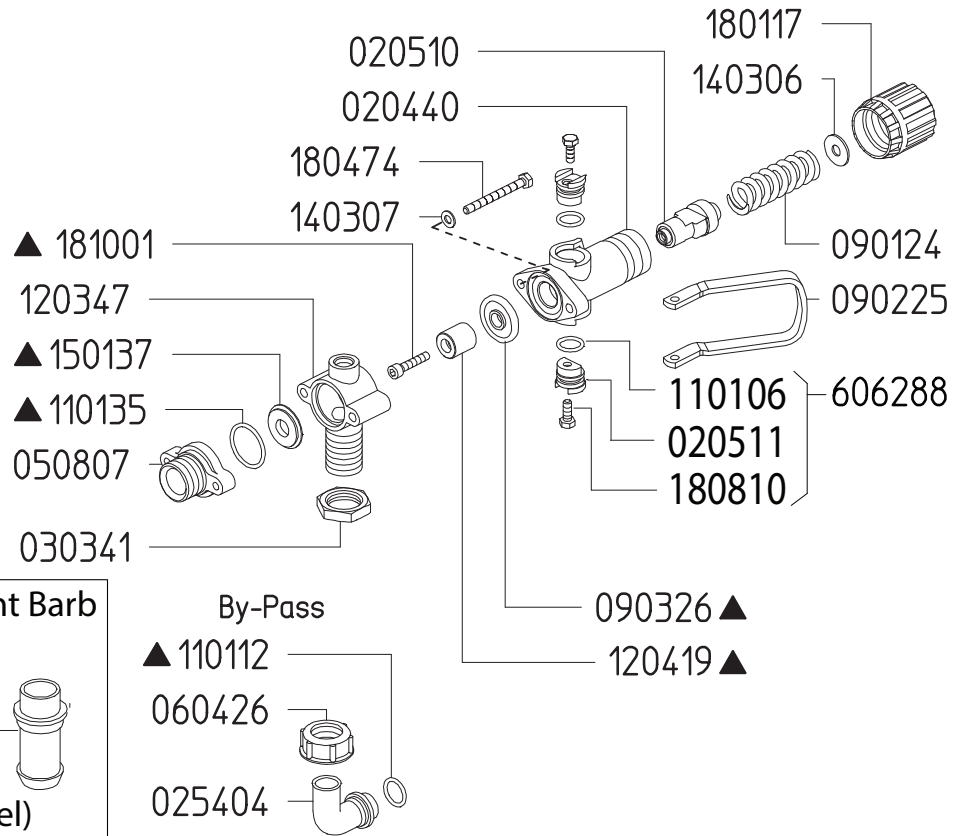


Adjustable Pressure Regulator

Maximum Flow	32.0 GPM / 121 lpm
Maximum Pressure	600 PSI / 41 bar
Inlet Port - Hose Barb	3/4" Male BSP
Outlet Port	-
Bypass - Hose Barb	3/4" HB

606293	
KIT 593	
▲	
CODE	QTY
090326	1
110112	1
110135	1
120419	1
150137	1
181001	1

Optional Straight Barb	
020225	(Poly)
1950000	(Stainless Steel)

Revised 8-29-2024

Part #	Description	Qty
0202.25	BYPASS HOSE BARB - STRAIGHT (OPTIONAL)	1
0204.40	VALVE BODY	1
0205.10	VALVE CYLINDER	1
0205.11	VALVE CYLINDER CAM	2
0254.04	BYPASS HOSE BARB - ELBOW	1
0303.41	NUT	1
0508.07	BYPASS FLANGE	1
0604.26	BYPASS BARB NUT	1
0901.24	SPRING (HIGH PRESSURE)	1
0902.25	DUMP VALVE LEVER	1
0903.26	DIAPHRAGM ▲	1
1101.06	O-RING ▲	2
1101.12	O-RING ▲	1
1101.41	O-RING ▲	1

Part #	Description	Qty
1203.47	ELBOW	1
1204.19	STEEL POPPET ▲	1
1403.06	WASHER	1
1403.07	WASHER	2
1501.37	SEAT ▲	1
1801.17	ADJUSTMENT KNOB	1
1804.74	BOLT	2
1810.01	STAINLESS STEEL BOLT ▲	1
19500.00	BYPASS HOSE BARB - STRAIGHT, SS (OPTIONAL)	1
6062.88	REGULATOR CAM KIT	2
6062.93	REPAIR KIT FOR 6005.31 CONTROL UNIT (KIT 593)	1

▲ Parts included in Repair Kit #6062.93 (KIT 593)

The control unit features a manual dump valve and pressure control knob

1. Before operating or re-operating the pump, push the manual dump valve lever (0902.25) down, so the pump will start at zero pressure. FAILURE TO DO SO WILL VOID PUMP WARRANTY.
2. Turn pressure adjustment knob (1801.17) counterclockwise to relieve spring tension. NOTE: Step 2 applies only to initial start-up, and is not necessary in daily operation of pump.
3. Start unit and let run until air is evacuated from system, when only liquid is expelled from the bypass line.
4. Return dump valve lever to the UP position. Open spray gun or spray boom and turn the pressure adjustment knob (1801.17) clockwise until desired operating pressure is achieved.