



Scan this QR Code
for more information



DELTA 125 5-cylinder, medium pressure diaphragm pumps are internally manifolded with anodized aluminum construction and anodized aluminum and stainless steel liquid handling parts.

DELTA 125 pumps are excellent choices for various horticultural, agricultural, lawn care, nursery, pest control and turf spraying applications. They are also effectively used for aircraft de-icing, hydrostatic testing and cleaning applications.



DELTA 125 VA



DELTA 125 TSVA



DELTA 125 TS2C



DELTA 125 VAGR1



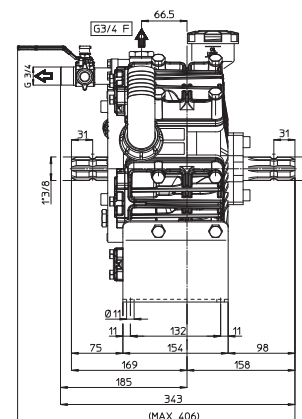
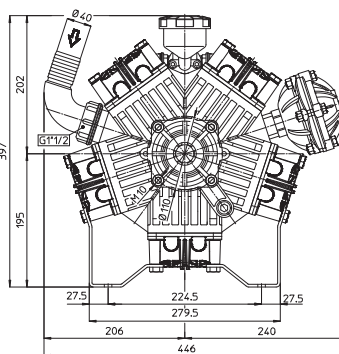
Model	GPM	l/min	PSI	bar	RPM	Drive Configuration	Weight
DELTA 125 VA	34.0	126.0	560	40	550	Universal VA Drive Face. Mounting Rails	65 LBS
DELTA 125 TSVA	34.0	126.0	560	40	550	Universal VA Drive Face x 1-3/8" 6-Spline Male PTO	65 LBS
DELTA 125 TS2C	34.0	126.0	560	40	550	1-3/8" 6-Spline Male PTO Thru-Shaft	65 LBS
DELTA 125 VAGR1	34.0	126.0	560	40	550	Gear Reduction for Gas Engines with 1" Shaft, 8-20 HP	85 LBS

Specifications	DELTA 125
Inlet Port	1-1/4" Hose Barb
Outlet Ports	(2) 1/2" Hose Barb, 3/4" MBSP
Bypass	3/4" Hose Barb
Dimensions	14.0"L x 18.0"W x 16.0"H
Diaphragm Material	GREENTECH (Std) Buna-N (Opt)

Lubrication: Requires 69 oz. of Udor Lube 40W Premium Pump Oil.
Alternate Oil: 30W non-detergent or 15W-40 non-detergent oil.

QUICK REFERENCE SERVICE PARTS

Description	Part #
Diaphragm Kit (GREENTECH)	6062.F7
Diaphragm Bolt / Washer Kit	6062.87
Valve Kit	6062.F8
Regulator Repair Kit	6062.53
Complete Repair Kit	8700.82CK



Dimensional Drawings are
Shown in Millimeters.
To Convert to Inches,
Multiply Dimension x 0.03937

Recommended Accessories and Drive Options



6005.05
Control Unit
Regulator



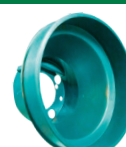
5034.B5
Gear Reduction
1" Shaft Gas Engine



7751.A3
1" Solid Keyed
Shaft and Bolts



7753.A6
1-1/8" Male PTO
Shaft and Bolts



6066.05
PTO Drive
Safety Shield



15.5823
Udor Lube
Premium Pump Oil