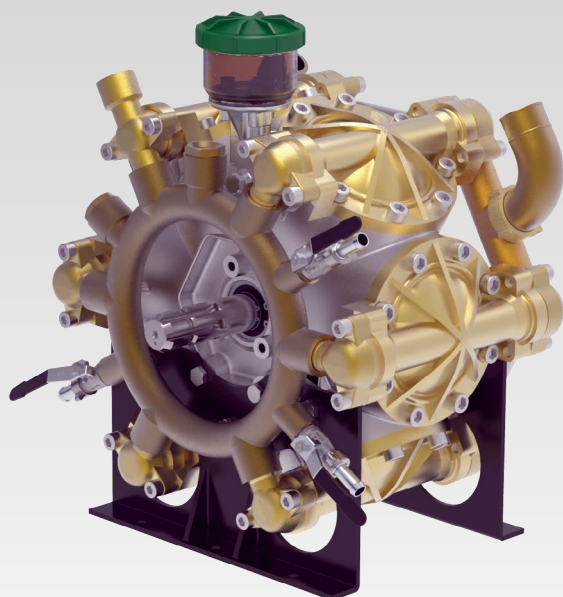


# BETA 200 / BETA 240

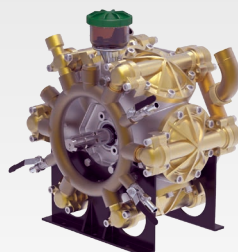


Scan this QR Code  
for more information



**BETA 200 & 240** 6-cylinder, high pressure, high volume diaphragm pumps are constructed of anodized aluminum, brass and stainless steel and have anodized aluminum, brass and stainless steel liquid handling parts. Includes mounting rails and 6005.08 control unit with pressure gauge. Simplicity of design and common parts allow for easy and economical maintenance.

**BETA 200 & 240** pumps are excellent choices for various horticultural and agricultural spraying applications.

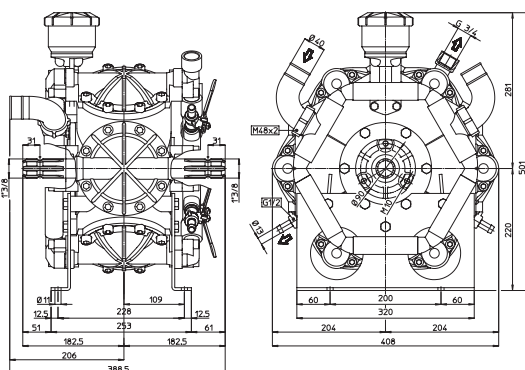


**BETA 200 TS2C**



**BETA 240 TS2C**

Model	GPM	l/min	PSI	bar	RPM	Drive Configuration	Weight
<b>BETA 200 TS2C</b>	56.0	218.0	725	50	550	1-3/8" 6-Spline Male PTO Thru-Shaft	200 LBS
<b>BETA 240 TS2C</b>	64.0	243.0	725	50	550	1-3/8" 6-Spline Male PTO Thru-Shaft	200 LBS



Dimensional Drawings are  
Shown in Millimeters.  
To Convert to Inches,  
Multiply Dimension x 0.03937

Specifications	BETA 200	BETA 240
Inlet Port	(2) 1-1/2" Hose Barb	
Outlet Ports	(2) 1/2" Hose Barb, 3/4" NPT	
Bypass	1-1/4" Hose Barb	
Dimensions	16.1"L x 15.3"W x 19.7"H	
Diaphragm Material	GREENTECH (Standard)	

**Lubrication:** Requires 170 oz. of Udor Lube 40W Premium Pump Oil.  
Alternate Oil: 30W non-detergent or 15W-40 non-detergent oil.

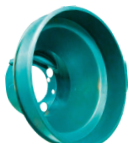
## QUICK REFERENCE SERVICE PARTS

Description	Part #
Diaphragm Kit (GREENTECH)	6062.C7
Diaphragm Bolt / Washer Kit	6062.64
Valve Kit	6062.E2
Regulator Repair Kit	8701.03
Complete Repair Kit	8700.55CK

## Recommended Accessories and Drive Options



**6066.09**  
Shaft Protector  
and Mounting Bolts



**6066.05**  
PTO Drive  
Safety Shield



**6005.08**  
Control Unit  
Regulator



**0016.04**  
Venturi Agitator  
1/2" MNPT Inlet



**UD1-1/2-16**  
1-1/2" HI-Flow Filter  
16 Mesh Screen



**15.5823**  
Udor Lube  
Premium Pump Oil