

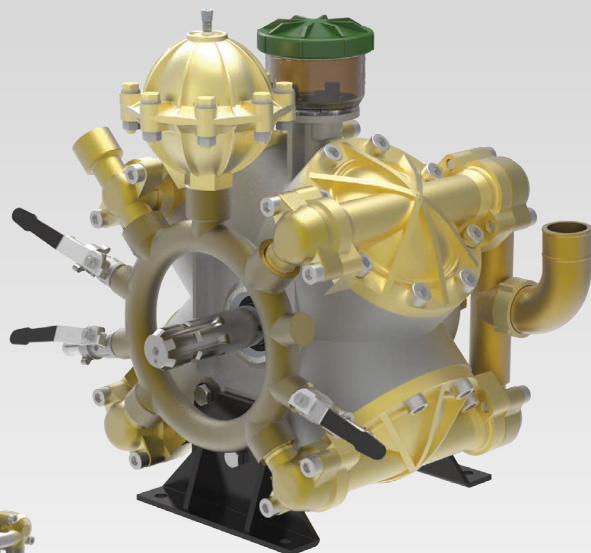


Scan this QR Code
for more information



BETA-170 4-cylinder, high pressure, high volume diaphragm pumps are constructed of anodized aluminum, brass and stainless steel and have anodized aluminum, brass and stainless steel liquid handling parts. Includes mounting rails and 6005.05 control unit with pressure gauge. Simplicity of design and common parts allow for easy and economical maintenance.

BETA-170 pumps are excellent choices for various horticultural and agricultural spraying applications. 🌱



BETA 170 TS2C

Model	GPM	l/min	PSI	bar	RPM	Drive Configuration	Weight
BETA 170 TS2C	45.0	170.0	725	50	550	1-3/8" 6-Spline Male PTO Thru-Shaft	130 LBS

Specifications

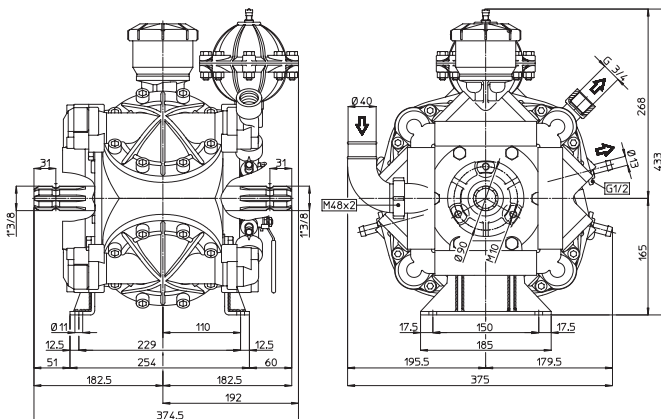
BETA 170

Inlet Port	1-1/2" Hose Barb
Outlet Ports	(2) 1/2" Hose Barb, 3/4" NPT
Bypass	1" Hose Barb
Dimensions	16"L x 15.5"W x 12.6"H
Diaphragm Material	GREENTECH (Standard)

Lubrication: Requires 91 oz. of Udor Lube 40W Premium Pump Oil.
Alternate Oil: 30W non-detergent or 15W-40 non-detergent oil.

QUICK REFERENCE SERVICE PARTS

Description	Part #
Diaphragm Kit (GREENTECH)	8700.07
Diaphragm Bolt / Washer Kit	6062.36
Valve Kit	6062.E1
Regulator Repair Kit	8701.03
Complete Repair Kit	8700.07CK



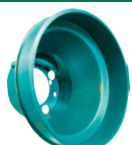
Dimensional Drawings are
Shown in Millimeters.
To Convert to Inches,
Multiply Dimension x 0.03937

Recommended Accessories and Drive Options



6066.09

Shaft Protector
and Mounting Bolts



6066.05

PTO Drive
Safety Shield



6005.05

Control Unit
Regulator

0016.04

Venturi Agitator
1/2" MNPT Inlet



UD1-1/2-16

1-1/2" HI-Flow Filter
16 Mesh Screen



15.5823

Udor Lube
Premium Pump Oil