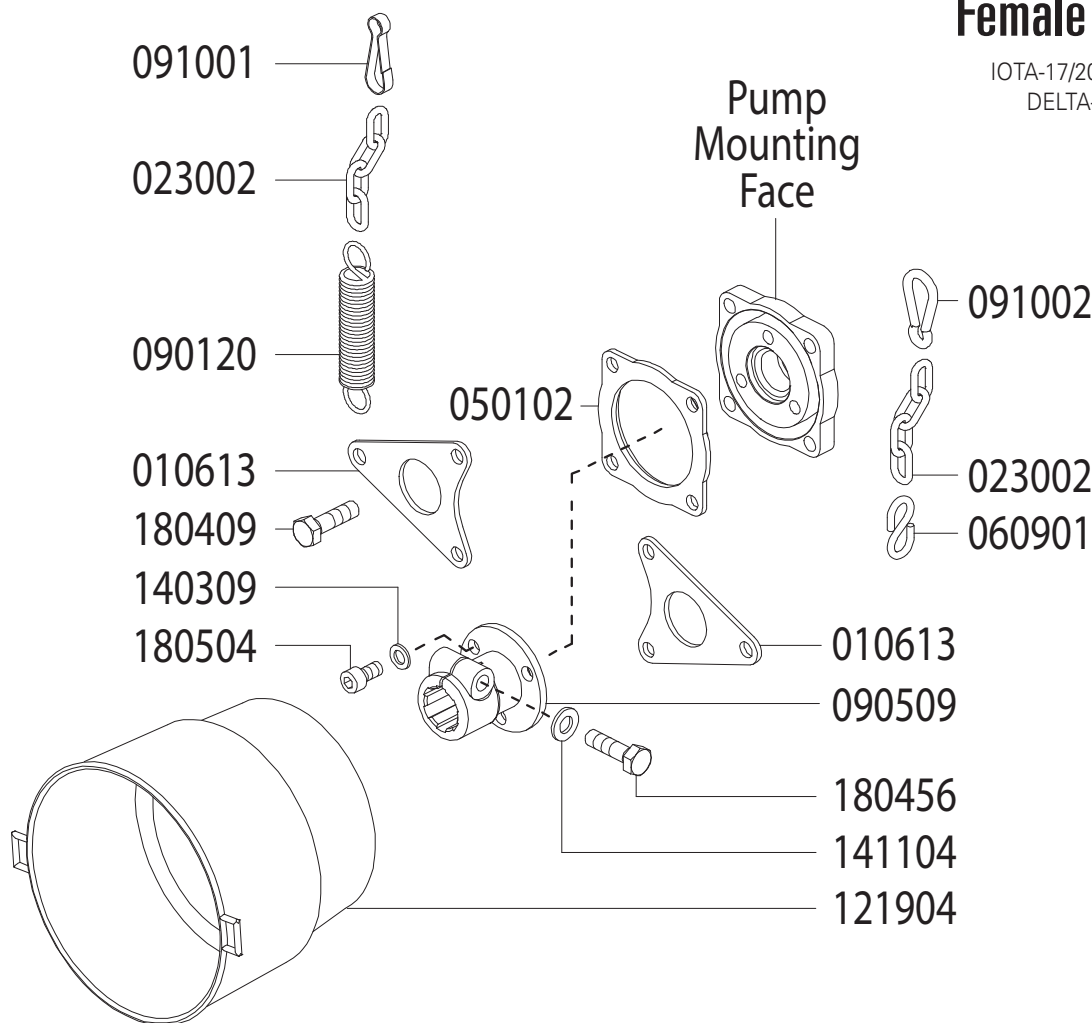


7752.A2

Female PTO Coupler

IOTA-17/20*, KAPPA-30/40/55
DELTA-75, ZETA-40/85



Revised 3-1-2020

Part #	Description	Qty
0106.13	Torque Arm Bracket	2
0230.02	Chain	2
0501.02	Seal Retainer Flange	1
0609.01	S-Hook	1
0901.28	Spring	1
0905.09	Female PTO Adapter	1
0910.01	Spring Clip	1
0910.02	Spring Clip	1

Part #	Description	Qty
1219.04	PTO Safety Shield	1
1403.10	Washer	2
1411.04	Lock Washer	1
1804.07	Hex Bolt	4
1804.56	Hex Bolt	1
1804.56	Hex Bolt	1
1805.04	Allen Bolt	3
1805.24	Bolt	2

INSTALLATION INSTRUCTIONS

NOTE: USE BLUE THREADLOCKER OR EQUIVALENT ON ALL BOLTS.

- Attach the female PTO adapter (Ref #7450) to the pump crankshaft using the (3) Allen Bolts. (Ref #7900).
- Position seal retainer flange (Ref #7250) onto pump mounting face. Install (2) torque arm brackets (Ref #7030) onto seal retainer flange, as shown above, using the (4) hex bolts (Ref #7751) provided.
- Install PTO safety shield (Ref #7651) to torque arm brackets with the (2) hex bolts (Ref #5950) and (2) washers (Ref #1845) provided.
- Before installing pump onto PTO shaft, inspect PTO shaft for wear or damage. NEVER INSTALL THE PUMP ON A WORN OR DAMAGED PTO SHAFT.
- Slide pump assembly onto PTO shaft and install hex bolt (Ref #7752) and lock washer (Ref #1887).
NOTE - There is an access hole in the PTO safety shield provided for this purpose.
- Secure chains to tractor with spring clips (Ref # 7500 & 7501) to prevent rotation during operation.

WARNING: To prevent serious injury, NEVER operate the pump without the spring clips securely fastened to the tractor

NOTE: To prevent serious injury, PTO drive pumps must NEVER be operated without PTO Safety Shield, (Ref # 7651) installed.