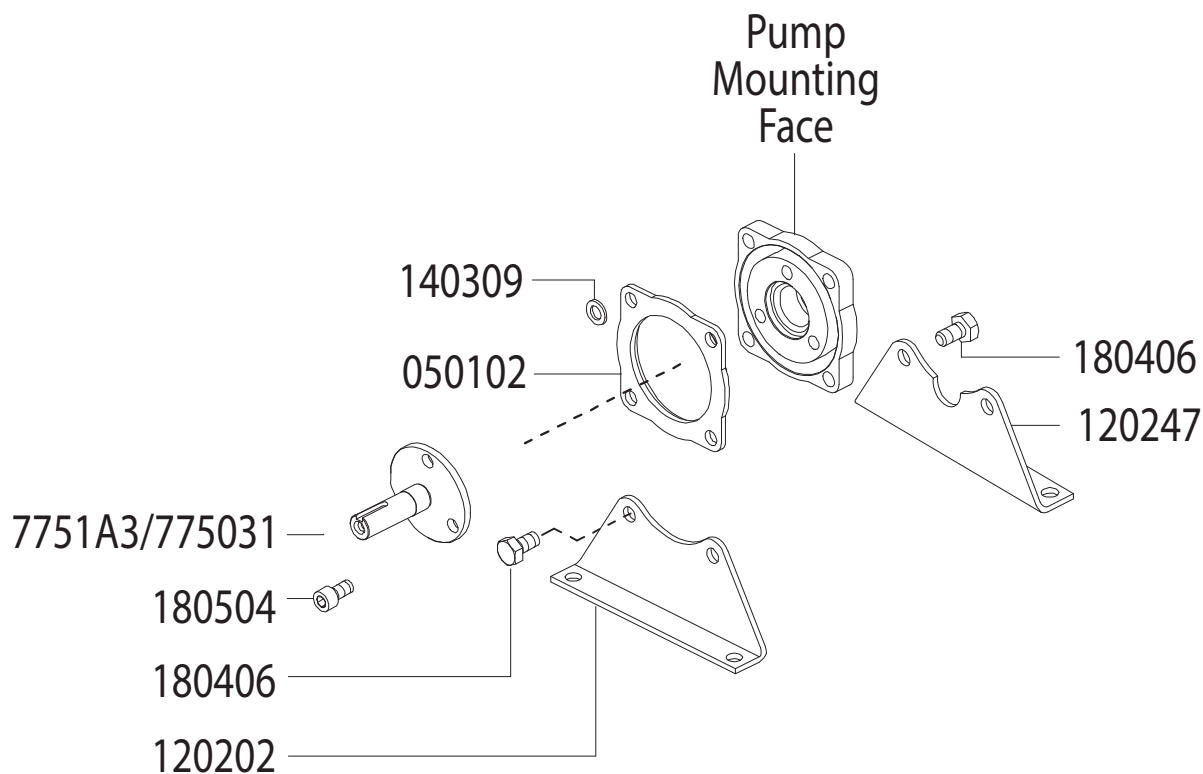


7751.A9 & 7751.A1

3/4" & 1" Male Solid Shaft Kits



Revised 3-1-2020

Part #	Description	Qty
0501.02	Seal Retainer Flange	1
1202.02	Base Plate	1
1202.47	Base Plate with Notch	1
1403.09	Washer	2
1403.36	Washer	2

Part #	Description	Qty
1804.06	Hex Bolt	4
1804.07	Hex Bolt	2
1805.04	Allen Bolt	3
7750.31	3/4" Solid Shaft	1
7751.A3	1" Solid Shaft	1

INSTALLATION INSTRUCTIONS

NOTE: USE BLUE THREADLOCKER OR EQUIVALENT ON ALL BOLTS.

1. Attach the shaft to the pump crankshaft using the (3) allen bolts (1805.04).
2. Bolt the NOTCHED base plate (1202.47) to the non-drive side of the pump with (2) hex bolts (1804.06).
3. Position seal retainer flange (0501.02) onto pump mounting flange and install remaining base plate (1202.02) to pump using (2) hex bolts (1804.06). Install remaining (2) hex bolts (1804.06) and (2) washers (1403.09) into seal retainer flange.
4. Pump and base assembly must be secured and aligned properly to prevent movement.
5. If 1" solid shaft kit (Part #7751.A1) is to be driven by a telescopic drive shaft, PTO safety shield must be installed to pump.

NOTE: Adequate protection must be provided in guarding around ALL moving parts, including belts, shafts, pulleys, and drive couplers.