



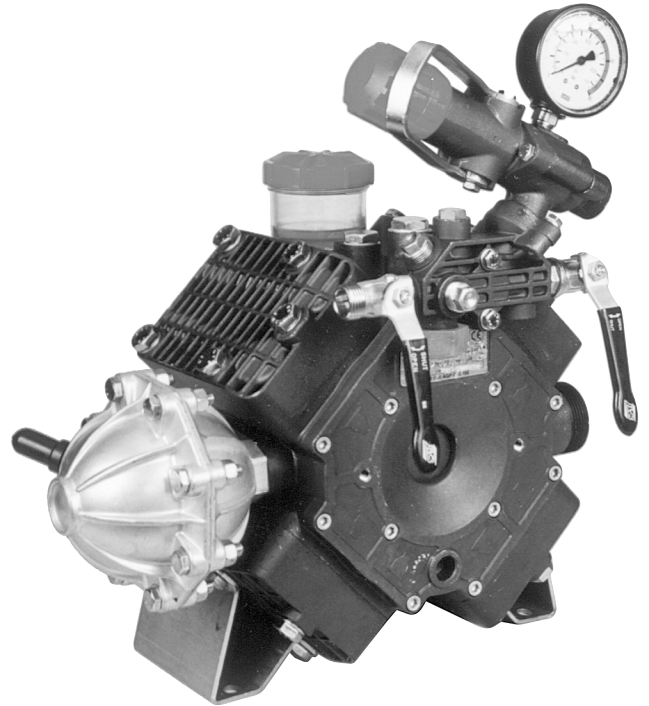
KAPPA-100 / KAPPA-100/C

Medium Pressure Diaphragm Pump

KAPPA-100 & KAPPA-100/C medium pressure diaphragm pumps are excellent for various horticultural, agricultural, lawn care, nursery and turf spraying applications. They are also effectively utilized in other applications such as hydrostatic testing, fire fighting and cleaning. Simplicity of design and common parts allow easy and affordable maintenance. Built-in pulsation dampener, control valve and pressure gauge are standard. KAPPA-100/C pump has a 1 3/8" six spline male PTO shaft.

Several drive options are available for the KAPPA-100, including:

Part Number	Description
4155.00	Hydraulic Motor Mounting Kit
5034.B5	16 - 20 HP Gear Reduction
7751.A3	1" Solid Keyed Shaft and Bolts
7753.A6*	1-3/8" 6-Spline Male Shaft & Bolts



For industrial uses and spraying applications not listed, please consult UDOR U.S.A.

* For ALL PTO Drive Applications, Safety Shield (Part #1219.02) is Recommended

SPECIFICATIONS

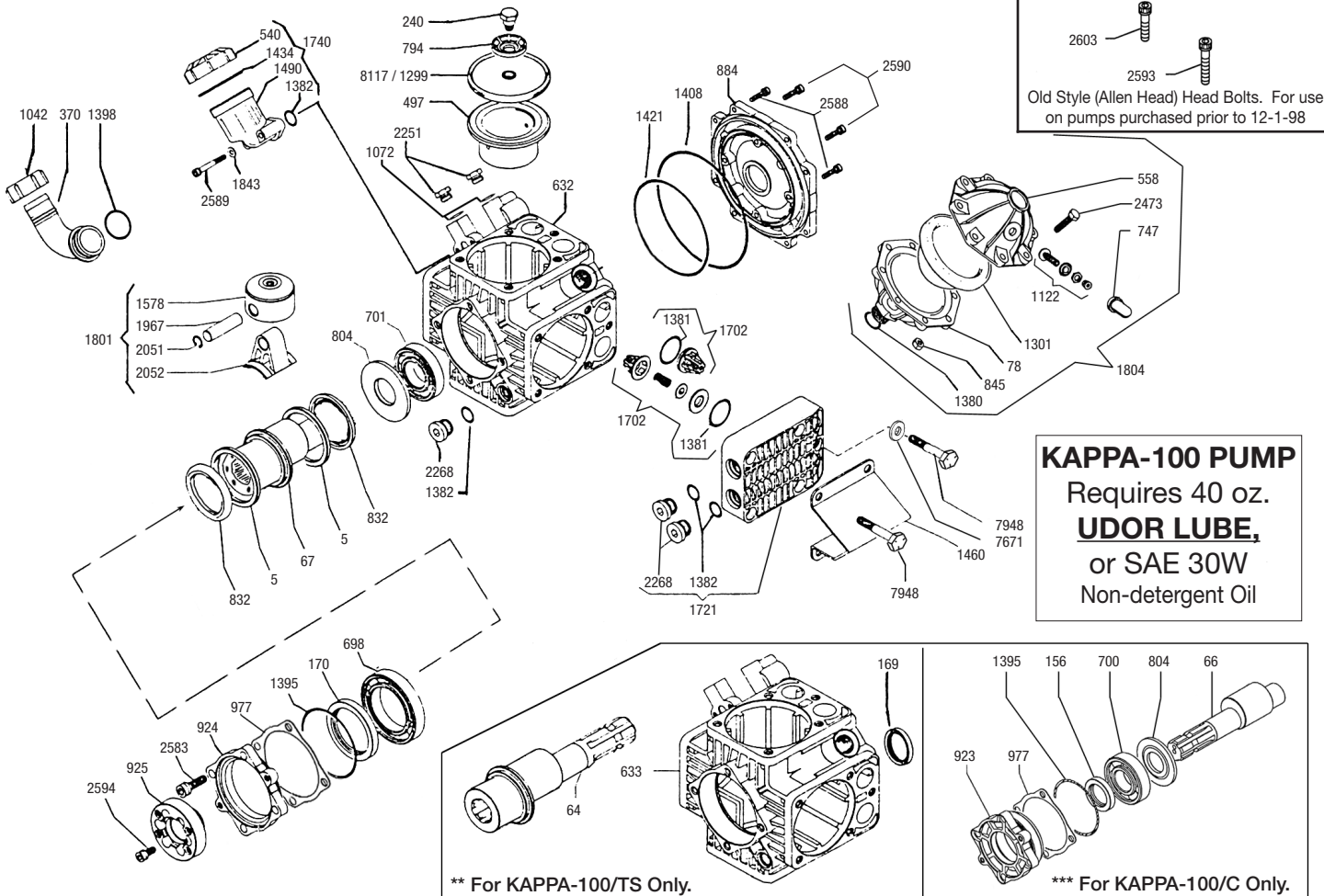
Maximum RPM.....	540 RPM
Maximum Flow	26 GPM
Maximum Pressure.....	560 PSI
Maximum Temperature.....	140°F
Hose Barb Ports	
In.....	1-1/2"
Out (Ball Valve Controlled).....	1/2" (2)
Bypass-Hose Barb	3/4"
Dimensions.....	L-15.5" x W-16" x H-12.5"
Weight	51 lbs.
Diaphragm Material	
Standard.....	DESMOPAN
Optional.....	BUNA-N

NOTE - Protect pumps from freezing. If freezing conditions exist, flush pump and system with a 50/50 mixture of anti-freeze and water.

UDOR U.S.A., INC.

500 Apollo Drive
 Lino Lakes, MN 55014
 TEL. (651) 785-0666
 FAX. (800) 732-2670
 www.udorusa.com

KAPPA-100 / KAPPA-100/C - Exploded View Diagram and Parts List



KAPPA-100 PUMP
Requires 40 oz.
UDOR LUBE,
or SAE 30W
Non-detergent Oil

** For KAPPA-100/TS Only.

*** For KAPPA-100/C Only.

REF#	PART#	DESCRIPTION	QTY	REF#	PART#	DESCRIPTION	QTY
5	0001.07	Retainer Ring	2	1380	1101.25	O-Ring	1
**64	0002.53	Crankshaft (Thru shaft)	1	*1381	1101.27	O-Ring	8
***66	0002.56	Crankshaft (KAPPA-100/C)	1	1382	1101.29	O-Ring	10
67	0002.56	Crankshaft	1	1395	1101.48	O-Ring	1
78	0003.10	Pressure Accumulator Lower	1	1398	1101.42	O-Ring	1
***156	0007.02	Shaft Seal (KAPPA-100/C)	1	1408	1101.63	O-Ring	1
**169	0007.26	Seal for Thru-Shaft Body	1	1421	1101.88	O-Ring	1
170	0007.27	Seal	1	1434	1101.D1	O-Ring	1
240	0102.04	Diaphragm Bolt	4	1460	1202.37	Mounting Rail	2
370	0202.78	Suction Elbow	1	1490	1203.27	Oil Reservoir	1
497	0206.24	Piston Sleeve	4	1578	1205.18	Piston	4
540	0208.98	Oil Reservoir Cap	1	1702	6006.01	Valve Assembly	8
558	0208.21	Accumulator Head	1	1721	6017.06	Head Assembly	4
632	0209.45	Pump Body	1	1740	6033.01	Oil Reservoir	1
**633	0209.47	Pump Body - Thru-Shaft	1	1801	6015.29	Piston/Rod Assembly	4
698	0214.01	Ball Bearing	1	1804	6031.02	Accumulator Assembly	1
***700	0214.04	Ball Bearing (KAPPA-100/C)	1	1843	1403.07	Washer	2
701	0214.05	Ball Bearing	1	1845	1403.10	Washer	6
747	0218.01	Air Valve Cap Protector	1	1967	1502.07	Connecting Rod Pin	4
794	0301.14	Retainer Washer	4	2051	1506.15	Snap Ring	8
804	0301.32	Spacer (2 Req'd for KAPPA-100/C)	1	2152	1519.19	Connecting Rod	4
832	0302.51	Washer	2	2251	1603.02	Oil Plug	2
845	0303.01	Nut	8	2268	1603.32	Head Plug	9
871	0304.04	Self-Locking Nut	2	2473	1804.54	Bolt	8
884	0501.87	Manifold Cover	1	2583	1805.05	Bolt	4
***923	0501.71	Flange (KAPPA-100/C)	1	2588	1805.19	Bolt	8
924	0501.69	Flange	1	2589	1805.31	Bolt	2
925	0501.70	Shaft Adapter	1	2590	1805.31	Bolt	4
977	0602.05	Gasket	1	2593	1805.14	Rail Mtg. Head Bolt (Allen Head, Old Style)	8
1042	0604.25	Suction Nut	1	2594	1805.24	Bolt	6
1072	0605.09	Aluminum Gasket	2	2603	1805.12	Head Bolt (Allen Head, Old Style)	12
1122	0608.16	Air Valve Assembly	1	7671	1403.09	Washer - Head Bolt	12
1299	0903.13	Piston Diaphragm (BUNA-N) optional	4	7948	1804.45	Head Bolt - Hex Head	20
*1301	0903.16	Accumulator Diaphragm	1	*8117	0903.38	Piston Diaphragm (DESMOPAN)	4

* Parts Included in Diaphragm Repair Kit - #8700.24. (Also available in Buna-N - #8700.23.)