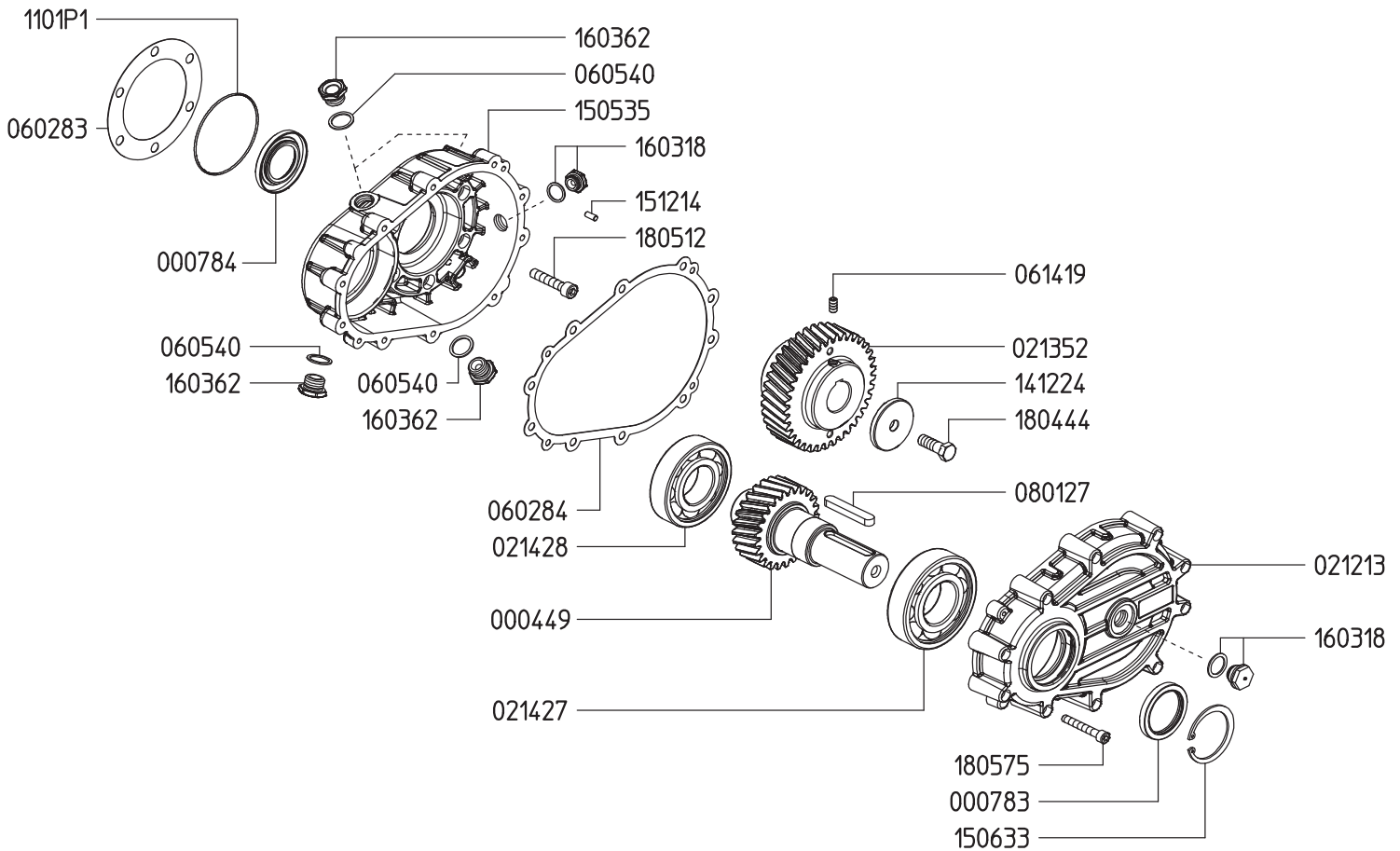


**GAS ENGINE 2.21:1 GEAR REDUCTION FOR  
VXX-SERIES PLUNGER PUMPS**  
on up to 75 HP GAS ENGINES with 40mm SHAFTS  
REQUIRES 20.3 OZ. 90W GEAR LUBE



Part #	Description	Qty	Part #	Description	Qty
0004.49	GEAR SHAFT "RX 122"	1	0801.27	KEY A12X8X70 UNI6604-A	1
0007.84	OIL SEAL D45	1	1101.P1	O-RING D91.70 (RIF.2362)	1
0007.83	OIL SEAL D50	1	1412.24	WASHER D60	1
0212.13	REDUCER COVER "RX 115/118/122"	1	1505.35	GEAR BODY "RX 115/118/122"	1
0213.52	GEAR "RXX 122"	1	1506.33	SNAP RING D65	1
0214.27	BALL BEARING D50	1	1512.14	PLUG D6.0X14 UNI-EN28734	1
0214.28	BALL BEARING D45	1	1603.18	OIL PLUG G1/2 + GASKET	2
0602.83	GASKET "RX 115/118/122"	1	1603.62	PLUG G1/2	3
0602.84	GASKET "RX 115/118/122"	1	1804.44	HEX SCREW M12X35 UNI5739	1
0605.40	GASKET D21.5	3	1805.12	ALLEN SCREW M10X50 UNI5931	6
0614.19	SET SCREW M8X16 UNI5929	1	1805.75	ALLEN SCREW M8X55 UNI5931	10