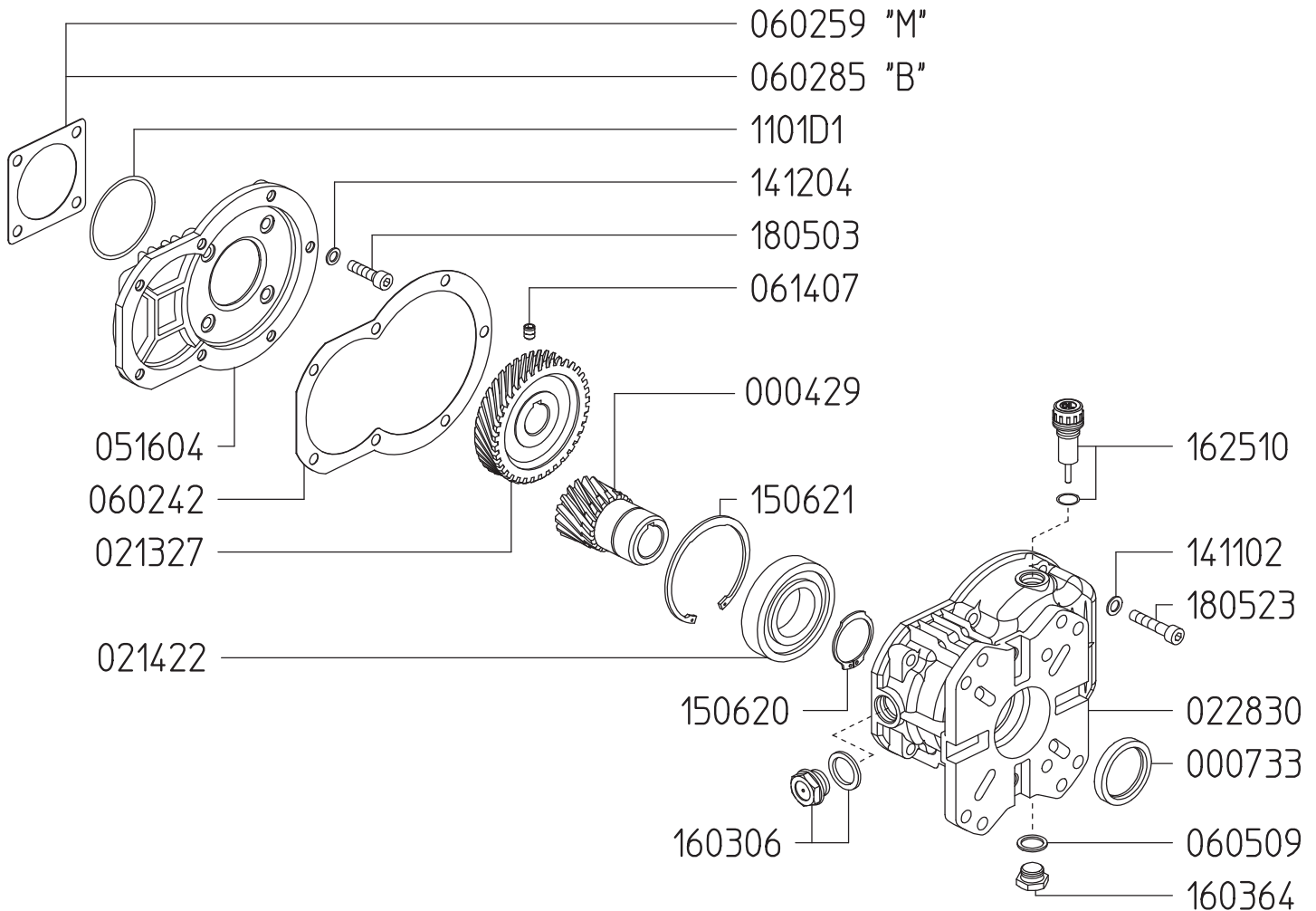


**GAS ENGINE GEAR REDUCTION FOR
B/BK/MS/MWT/C/CS/CWT/CK/CX-SERIES PLUNGER PUMPS**
on up to 22 HP GAS ENGINES with 1" SHAFTS
REQUIRES 10.8 OZ. 90W GEAR LUBE



Part #	Description	Qty
0004.29	GEAR SHAFT "RM122" D25.4	1
0007.33	OIL SEAL D30	1
0213.27	GEAR "RM122" IP	1
0214.22	BALL BEARING D40	1
0228.30	COUPLER "RM122"	1
0516.04	FLANGE "RM122" IP	1
0602.42	GASKET "RM122"	1
0602.59	GASKET "RM122" M SERIES PUMPS	1
0602.85	GASKET "RM122" B SERIES PUMPS	1
0605.09	GASKET D17	1
0614.07	SET SCREW M8X10 UNI5929	1

Part #	Description	Qty
1101.D1	O-RING D58.42 (RIF.3231)	1
1411.02	SCHNORR WASHER D8	6
1412.04	BONDED WASHER D8.3	4
1506.20	SNAP RING D40	1
1506.21	SNAP RING D80	1
1603.06	OIL PLUG G1/2 + GASKET	1
1603.64	PLUG G3/8	1
1625.10	OIL PLUG G3/8 "PN"	1
1805.03	ALLEN SCREW M8X30 UNI5931	4
1805.23	ALLEN SCREW M8X40 UNI5931	6