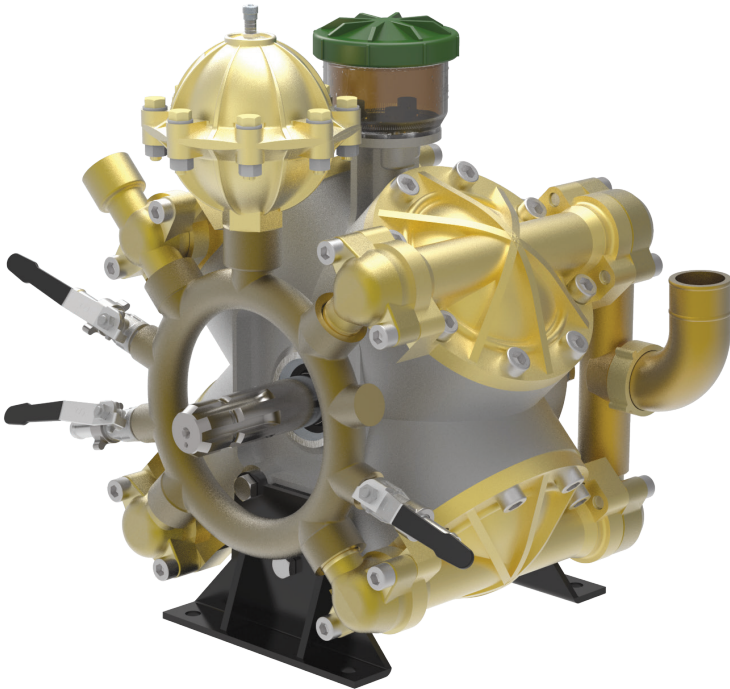


## 4-Cylinder, High-Pressure Diaphragm Pumps



**BETA-170** 4-cylinder, high pressure, high volume diaphragm pumps are constructed of anodized aluminum, brass and stainless steel and have anodized aluminum, brass and stainless steel liquid handling parts. Includes mounting rails and 6005.05 control unit with pressure gauge. Simplicity of design and common parts allow for easy and economical maintenance.

**BETA-170** pumps are excellent choices for various horticultural and agricultural spraying applications.

Model	GPM	l/min	PSI	bar	RPM	Drive Configuration	Weight
BETA 170 TS2C	45.0	170.0	725	50	550	1-3/8" 6-Spline Male PTO Thru-Shaft	130 LBS

Specifications	BETA 170	Description	Part #
Inlet Port	1-1/2" Hose Barb	Diaphragm Kit (GREENTECH)	8700.07
Outlet Ports	(2) 1/2" Hose Barb, 3/4" NPT	Diaphragm Bolt / Washer Kit	6062.36
Bypass	1" Hose Barb	Valve Kit	6062.E1
Piston Diameter	75mm	Regulator Repair Kit	8701.03
Crankshaft Stroke/Code	19.0mm / U	Complete Repair Kit	8700.07CK
Dimensions	16"L x 15.5"W x 12.6"H		

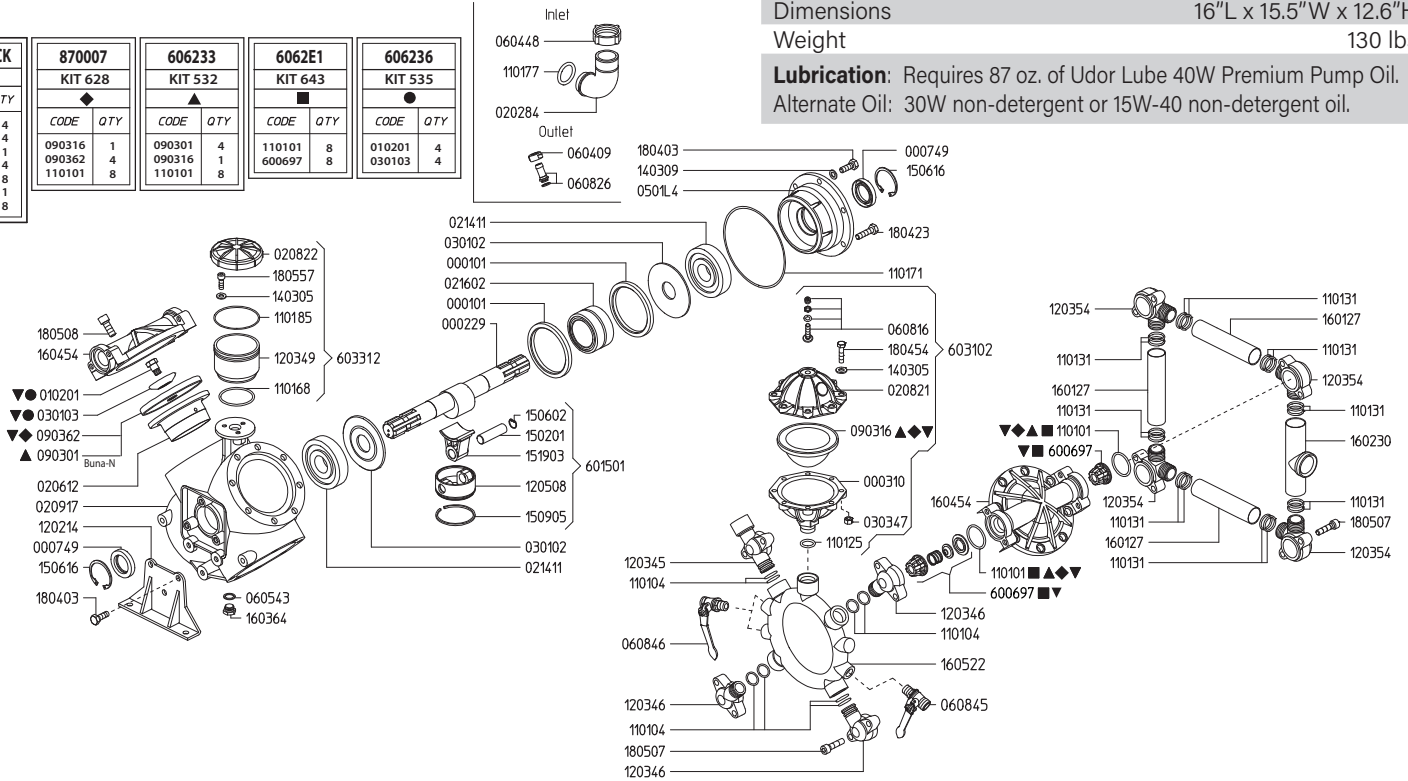
**Lubrication:** Requires 91 oz. of Udor Lube 40W Premium Pump Oil.  
Alternate Oil: 30W non-detergent or 15W-40 non-detergent oil.



Maximum Flow	45.0 GPM / 170 lpm
Maximum Pressure	725 PSI / 50 bar
Maximum RPM	550 RPM
Inlet Port	1-1/2" Hose Barb
Outlet Ports	(2) 1/2" Hose Barb Valve, 3/4" FPT
Bypass	1" Hose Barb
Dimensions	16"L x 15.5"W x 12.6"H
Weight	130 lbs

**Lubrication:** Requires 87 oz. of Udor Lube 40W Premium Pump Oil.  
Alternate Oil: 30W non-detergent or 15W-40 non-detergent oil.

8700.07CK		870007 KIT 628		606233 KIT 532		6062E1 KIT 643		606236 KIT 535	
CODE	QTY	CODE	QTY	CODE	QTY	CODE	QTY	CODE	QTY
010201	4	090316	1	090301	4	110101	8	010201	4
030103	4	090362	4	090316	1	600697	8	030103	4
090316	1	110101	8	110101	8				
090362	4								
110101	8								
110142	1								
6063E2	8								



Revised 7-15-2024

Part #	Description	Qty
0001.01	RETAINER RING "BETA/OMEGA"	2
0002.29	CRANKSHAFT - TS 2C	1
0003.10	PRESSURE ACCUMULATOR BASE	1
0007.49	OIL SEAL D35	2
0102.01	DIAPHRAGM BOLT "ZETA/KAPPA 121" ●▼	4
0202.84	HOSE BARB D40	1
0206.12	SLEEVE D75	4
0208.21	PRESSURE ACCUMULATOR COVER	1
0208.22	OIL RESERVOIR COVER	1
0209.17	CRANKCASE "BETA 150/OMEGA 170"	1
0214.11	BALL BEARING D35	2
0216.02	ROLLER BEARING D55	1
0301.02	ROD DISC "BETA/OMEGA"	2
0301.03	DIAPHRAGM DISC "BETA/OMEGA" ●▼	4
0303.47	HEX NUT M8X8	8
0501.L4	BUSHING FLANGE "BETA/OMEGA"	1
0604.09	BRASS NUT G1/2	1
0604.48	BRASS NUT M48X2	1
0605.43	GASKET D17	1
0608.16	AIR VALVE ASSY	1
0608.26	HOSE BARB D13+GASKET	1
0608.45	BALL VALVE RIGHT	1
0608.46	BALL VALVE LEFT	1
0903.01	PISTON DIAPHRAGM 130MM BUNA-N ▲	4
0903.16	ACCUMULATOR DIAPHRAGM ▼◆▲	1
0903.62	PISTON DIAPHRAGM 130MM GREENTECH ◆▼	4
1101.01	O-RING - VALVE ▲◆■▼	8
1101.04	O-RING - DISCHARGE ELBOWS	8
1101.25	O-RING - PRESSURE ACCUMULATOR	1
1101.31	O-RING - INLET MANIFOLD TUBES	16
1101.68	O-RING - OIL RESERVOIR	1
1101.71	O-RING - BUSHING FLANGE	1
1101.77	O-RING - INLET HOSE BARB▼	1
1101.85	O-RING - OIL RESERVOIR	1
1202.14	BASE PLATE "BETA 110/150"	2
1203.45	OUTLET ELBOW "BETA"	1

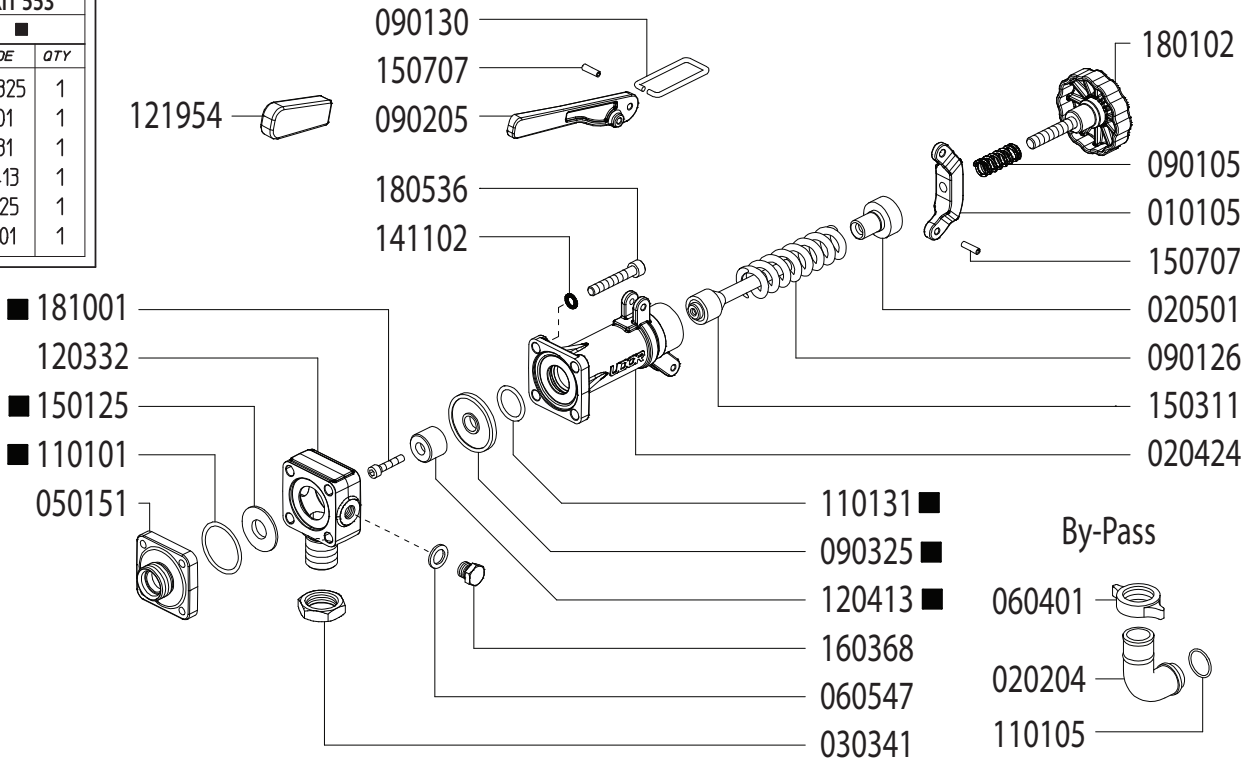
Part #	Description	Qty
1203.46	OUTLET ELBOW "BETA"	3
1203.49	OIL RESERVOIR "BETA"	1
1203.54	INLET ELBOW "BETA 150"	4
1205.08	ALUMINIUM PISTON D75 "BETA/OMEGA/ZETA"	4
1403.05	WASHER M8	11
1403.09	WASHER M10	6
1502.01	PIN D18X64	4
1506.02	SNAP RING D18	4
1506.16	SNAP RING D55	2
1509.05	PISTON RING D75	4
1519.03	CONNECTING ROD "OMEGA/BETA 110/150"	4
1601.27	SUCTION MANIFOLD "BETA 150"	3
1602.30	SUCTION MANIFOLD M48X2 "BETA 150"	1
1603.64	PLUG G3/8	1
1604.54	HEAD "BETA 110/150/200/240"	4
1605.22	OUTLET MANIFOLD	1
1804.03	HEX BOLT M10X30	10
1804.23	HEX BOLT M10X40	2
1804.54	HEX BOLT M12X50	8
1805.07	ALLEN BOLT M10X40	16
1805.08	ALLEN BOLT M12X30	32
1805.57	ALLEN BOLT M8X22	3
6006.97	VALVE ASSEMBLY W/O O-RING ■▼	8
6015.01	ROD ASSEMBLY "OMEGA/BETA" D75	4
6031.02	PRESSURE ACCUMULATOR ASSEMBLY	1
6033.02	OIL RESERVOIR ASSEMBLY	1
6062.33	DIAPHRAGM KIT 130MM BUNA-N (KIT 532)	1
6062.36	DIAPHRAGM DISC "BETA 150" (KIT 535)	1
6062.E1	IN/OUTLET VALVE KIT "BETA 150" (KIT 643)	1
8700.07	DIAPHRAGM KIT 130MM GREENTECH (KIT 628)	1
8700.07CK	COMPLETE REPAIR KIT	1

- Parts in 6062.33 (Kit 532)
- Parts in 6062.36 (Kit 535)
- ▲ Parts in 6062.E1 (Kit 643)
- ◆ Parts in 8700.07 (Kit 628)
- ▼ Parts in 8700.07CK (Complete Repair Kit)

## Adjustable Pressure Regulator

Maximum Flow	47.3 GPM / 179.2 lpm
Maximum Pressure	1200 PSI / 81 bar
Inlet Port	3/4" Male BSP
Outlet Ports	-
Bypass - Hose Barb	1" HB

<b>606254</b>	
<b>KIT 553</b>	
■	
<b>CODE</b>	<b>QTY</b>
090325	1
110101	1
110131	1
120413	1
150125	1
181001	1



Revised 7-15-2024

Part #	Description	Qty
0101.05	LEVER GUIDE	1
0202.04	1" BRASS ELBOW HOSE BARB	1
0204.24	VALVE BODY	1
0205.01	VALVE CYLINDER	1
0303.41	NUT	1
0501.51	FLANGE	1
0604.01	BARB NUT	1
0605.47	GASKET D8	1
0901.05	SPRING	1
0901.30	PRESSURE BAIL	1
0901.26	SPRING	1
0902.05	HANDLE	1
0903.25 ■	DIAPHRAGM	1
1101.01 ■	O-RING - BYPASS FLANGE	1
1101.05	O-RING - BYPASS HOSE BARB	1

Part #	Description	Qty
1101.31 ■	O-RING - VALVE BODY	1
1203.32	INLET ELBOW - 3/4" MALE BSP	1
1204.13	POPPET ■	1
1219.54	HANDLE COVER - RUBBER	1
1501.25	SEAT ■	1
1503.11	REGULATOR STEM	1
1507.07	PIN	2
1603.68	PLUG - 1/4" BRASS	1
1801.02	ADJUSTMENT KNOB	1
1805.36	BOLT	4
1810.01	BOLT - STAINLESS STEEL ■	1
GG1500	HIGH PRESSURE GAUGE (OPTIONAL)	1
6062.54	REPAIR KIT (KIT 553)	

■ Parts Included in Repair Kit #6062.54 (KIT 553)

### OPERATING INSTRUCTIONS

1. Before operating or re-operating pump, lift R.V. Handle (0902.05) so pump will start at zero pressure.  
**FAILURE TO DO SO WILL VOID PUMP WARRANTY.**
2. Turn Pressure Adjustment Knob (1801.02) counter-clockwise to relieve spring tension. (Step 2 is only necessary on initial start-up and is not necessary for daily operation.)
3. Start unit and let run until air is evacuated from system, when only liquid is expelled from the bypass line.
4. Return R.V. Handle (0902.05) to down position. Open spray gun or spray boom and turn adjustment knob (1801.02) clockwise until desired operating pressure is achieved.

All Dimensions are WITHOUT Control Unit or Regulator

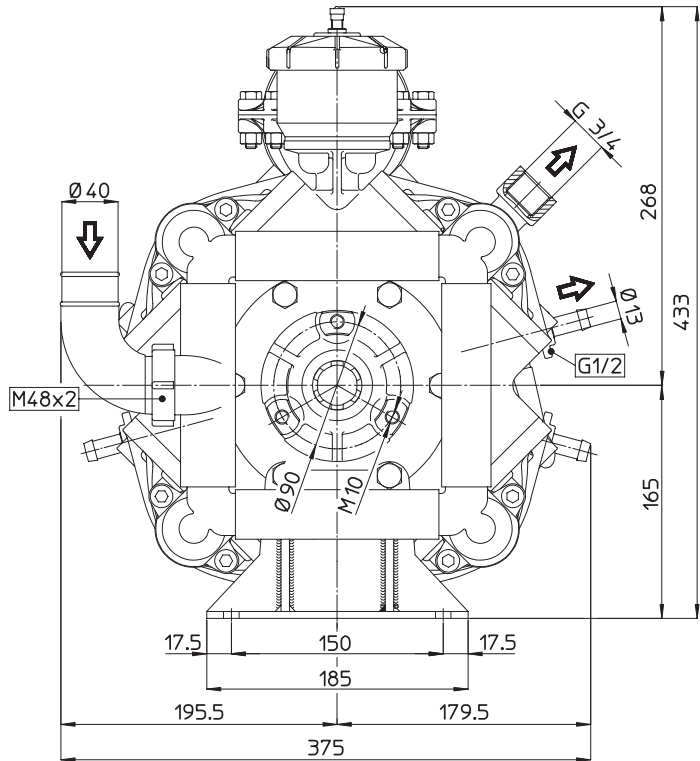
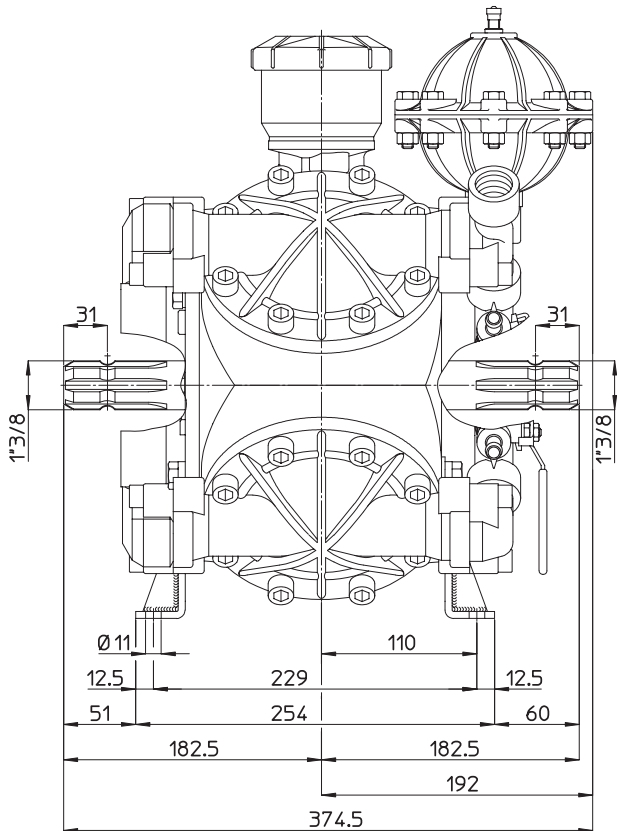
Dimensional Drawings are Shown in Millimeters. To Convert to Inches, Multiply Dimension x 0.03937

### Specifications

### BETA 170

Inlet Port - Hose Barb	1-1/2" HB
Outlet Ports - Hose Barb	(2) 1/2" HB
Bypass - Hose Barb	1" HB
Dimensions	16"L x 15.5"W x 12.6"H
Diaphragm Material	GREENTECH (Standard)

**Lubrication:** Requires 91 oz. of Udor Lube 40W Premium Pump Oil.  
Alternate Oil: 30W non-detergent or 15W-40 non-detergent oil.



## TORQUE SPECS

Ref.	Description	Ft./lb.	Nm
1	Diaphragm Bolts (Use Loctite 243)	22	30
2	Head Bolts	37	50
3	Pulsation Dampener Bolts	20	28
4	Bearing Flange Bolts	25	34
5	Oil Cup Bolts	7	10
6	Manifold Bolts - Aluminum/Brass	22	30

