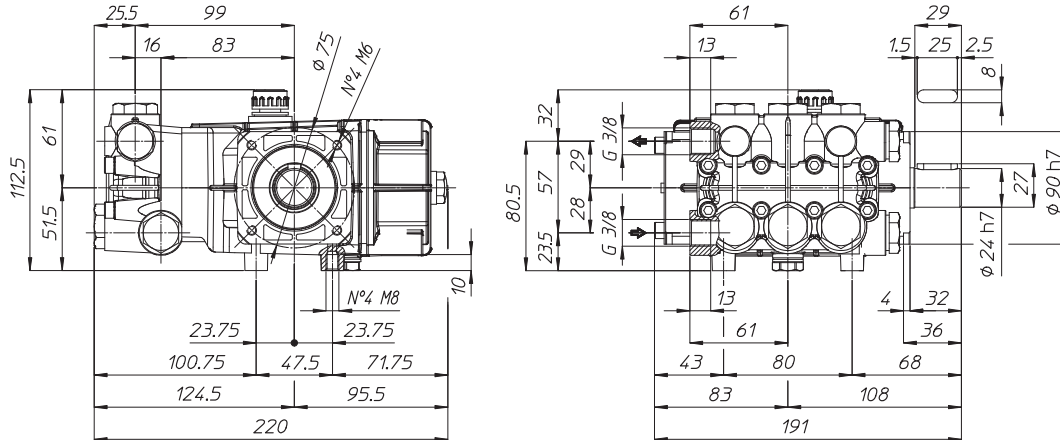


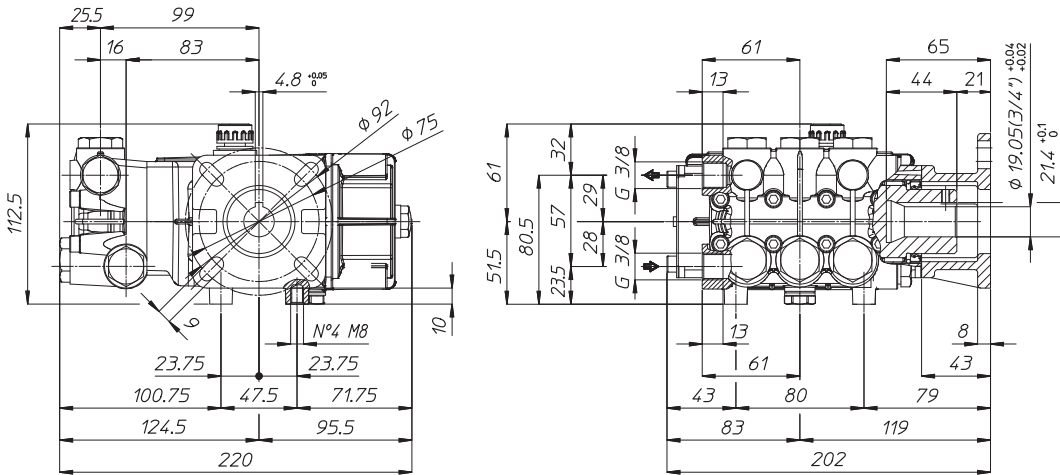
WEIGHT - SOLID SHAFT 12 LBS  
 WEIGHT - GAS ENGINE FLANGE 13 LBS  
 WEIGHT - ELECTRIC MOTOR FLANGE 13 LBS  
 LUBRICATION 10 OZ UDOR LUBE

*Dimensional Drawings are  
 Shown in Millimeters.  
 To Convert to Inches,  
 Multiply Dimension x 0.03937*

## PN SERIES PUMPS - 24MM SOLID SHAFT



## PN SERIES PUMPS - 3/4" HOLLOW SHAFT w/ GAS ENGINE FLANGE



## PN SERIES PUMPS - 5/8" HOLLOW SHAFT w/ NEMA 56C FLANGE

