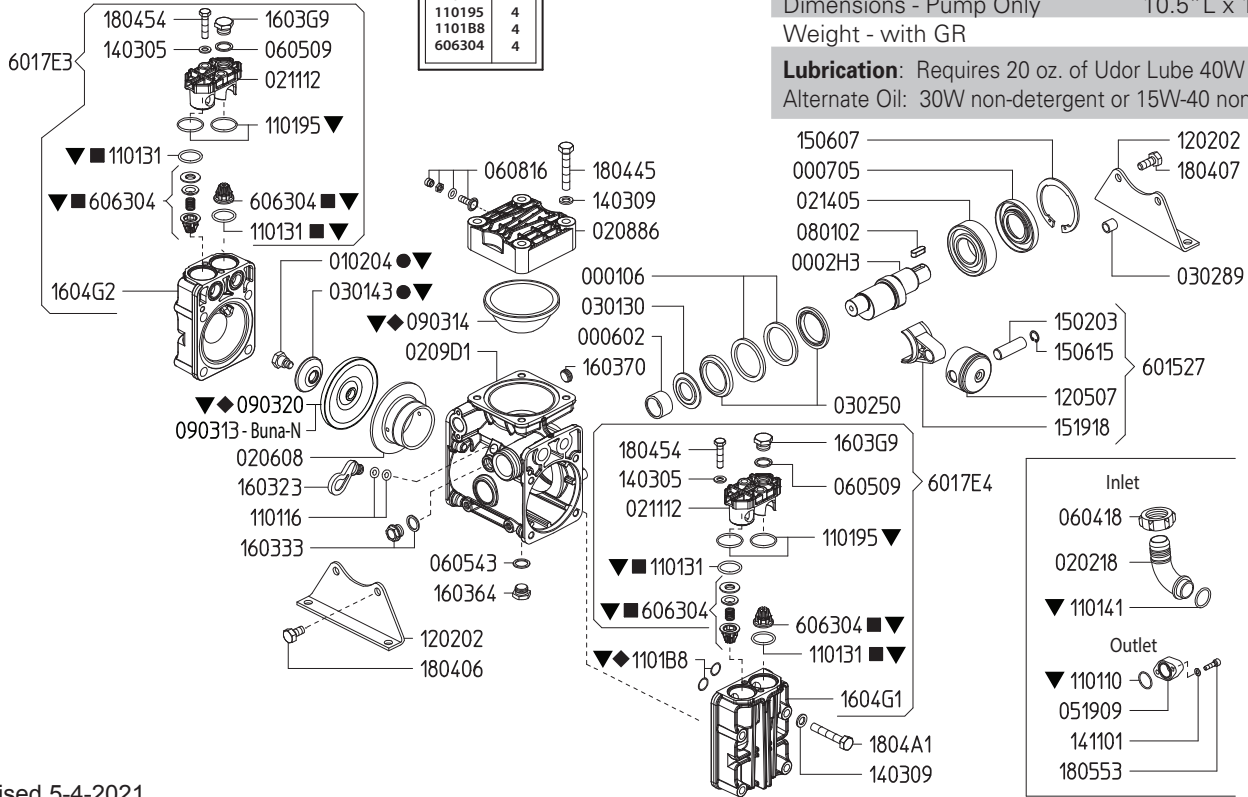


6062B4 KIT 612		6062G3 KIT 663		6062G4 KIT 664		8700.85CK	
CODE	QTY	CODE	QTY	CODE	QTY	CODE	QTY
010204	2	110131	4	090314	1	010204	2
030143	2	606304	4	090320	2	030143	2
				1101B8	4	090320	2
						110131	4
						110141	1
						110195	4
						110188	4
						606304	4

Maximum Flow	10.5 GPM / 40 lpm
Maximum Pressure	560 PSI / 40 bar
Maximum RPM	540
Inlet Port - Hose Barb	1" HB
Outlet Ports - Hose Barb, Valve	(2) 1/2" HB
Bypass - Hose Barb	3/4" HB
Dimensions - Pump Only	10.5" L x 11.5" W x 10.5" H
Weight - with GR	39 lbs

Lubrication: Requires 20 oz. of Udor Lube 40W Premium Pump Oil.
Alternate Oil: 30W non-detergent or 15W-40 non-detergent oil.



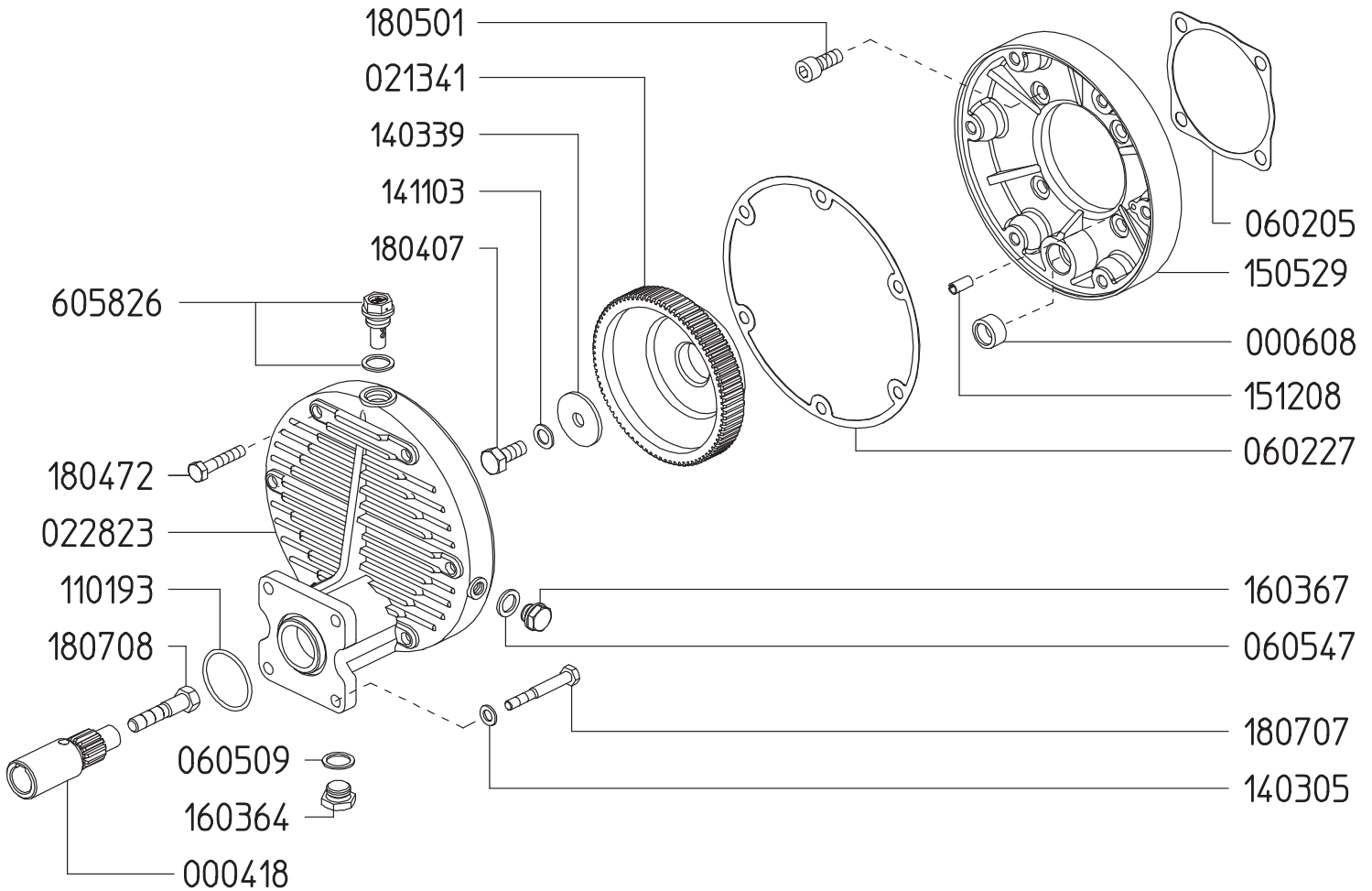
Revised 5-4-2021

Part #	Description	Qty
0001.06	RETAINER RING	2
0002.H3	SHAFT "DELTA 40"	1
0006.02	BUSHING D25	1
0007.05	OIL SEAL D35	1
0102.04	DIAPHRAGM BOLT ●▼	2
0202.18	HOSE BARB D25 (1")	1
0206.08	SLEEVE D55	2
0209.D1	CRANKCASE	1
0211.12	VALVE COVER	2
0214.05	BALL BEARING D35	1
0301.30	BEARING DISC	1
0301.43	DIAPHRAGM DISC ●▼	2
0302.50	ROD SPACER	2
0302.89	SPACER	2
0519.09	REMOTE CONTROL FLANGE G1/2	1
0604.18	BARB NUT M42X2	1
0605.09	GASKET D17	2
0605.43	GASKET D17	1
0608.16	AIR VALVE ASSEMBLY	1
0801.02	KEY A8X7X25	1
0903.13	PISTON DIAPHRAGM D100 BUNA-N	2
0903.14	ACCUMULATOR DIAPHRAGM ◆▼	1
0903.20	PISTON DIAPHRAGM D100 GREENTECH ◆▼	2
1101.10	O-RING - DISCHARGE PORT	1
1101.16	O-RING - OIL PLUG	2
1101.31	O-RING - VALVE ■▼	4
1101.41	O-RING - INLET HOSE BARB ▼	1
1101.95	O-RING - VALVE COVER ▼	4
1101.B8	O-RING - HEAD ◆▼	4
1202.02	BASE PLATE	2
1205.07	ALUMINIUM PISTON D55	2

Part #	Description	Qty
1403.05	WASHER M8	4
1403.09	WASHER M10	12
1411.01	SERATED WASHER M6	2
1502.03	PIN D15X48	2
1506.07	SNAP RING D72	1
1506.15	SNAP RING D15	2
1519.18	CONNECTING ROD	2
1603.23	OIL PLUG W/O O-RINGS	1
1603.33	PLUG G3/8+GASKET	1
1603.64	PLUG G3/8	1
1603.70	PLUG G3/8	1
1603.G9	HEAD PLUG 3/8	2
1604.G1	RIGHT HEAD	1
1604.G2	LEFT HEAD	1
1804.06	HEX BOLT M10X20	2
1804.07	HEX BOLT M10X25	2
1804.45	HEX BOLT M10X60	4
1804.54	HEX BOLT M8X35	4
1804.A1	HEX BOLT M10X70	8
1805.53	ALLEN BOLT M6X22	2
6015.27	ROD ASSEMBLY D55	2
6017.E3	HEAD ASSEMBLY - LEFT	1
6017.E4	HEAD ASSEMBLY - RIGHT	1
6063.04	VALVE ASSEMBLY W/O O-RING ■▼	4
6062.B4	DIAPHRAGM BOLT / WASHER KIT (KIT 612)	1
6062.G3	IN/OUTLET VALVE KIT (KIT 663)	1
6062.G4	DIAPHRAGM KIT - GREENTECH (KIT 664)	1
8700.85CK	COMPLETE REPAIR KIT	1

- Parts in 6062.B4 (Kit 612)
- Parts in 6062.G3 (Kit 663)
- ◆ Parts in 6062.G4 (Kit 664)
- ▼ Parts in 8700.85CK (Complete Repair Kit)

**GAS ENGINE GEAR REDUCTION FOR
KAPPA 32, KAPPA 43, DELTA 40 DIAPHRAGM PUMPS
on GAS ENGINES with 3/4" SHAFTS
REQUIRES 16 OZ. 90W GEAR LUBE**



Revised 2-1-2021

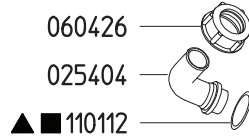
Part #	Description	Qty	Part #	Description	Qty
0004.18	GEAR SHAFT - 3/4"	1	1411.03	SERATED WASHER D10	1
0006.08	BEARING	1	1505.29	GEAR CASE - PUMP	1
0213.41	PUMP GEAR - VA	1	1512.08	ALIGNMENT PIN	1
0228.23	GEAR CASE - ENGINE	1	1603.64	OIL PLUG G3/8	1
0602.05	GASKET	1	1603.67	OIL PLUG G1/4	1
0602.27	GASKET	1	1804.07	HEX BOLT M10X25	1
0605.09	GASKET - ALUMINUM	1	1804.72	HEX BOLT M8X50	6
0605.47	GASKET - ALUMINUM	1	1805.01	ALLEN BOLT M10X25	4
1101.93	O-RING	1	1807.07	HEX BOLT 5/16 X 1"	4
1403.05	WASHER D8.4	4	1807.08	HEX BOLT 5/16 X 2-1/4"	1
1403.39	WASHER D11	1	6058.26	VENTED OIL CAP	1

6010.24 & 6010.24/LP

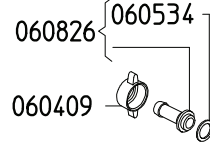
Pump Mounted Control Unit

606253		606255	
KIT 552		KIT 554	
▲		■	
CODE	Q.TY	CODE	Q.TY
090326	1	090326	1
110104	1	110104	1
110112	2	110112	2
110141	1	110141	1
120419	1	150123	1
150123	1	870104	1
181001	1		

By-Pass



Outlet



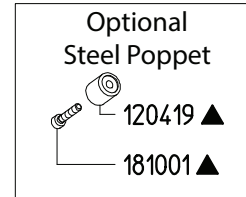
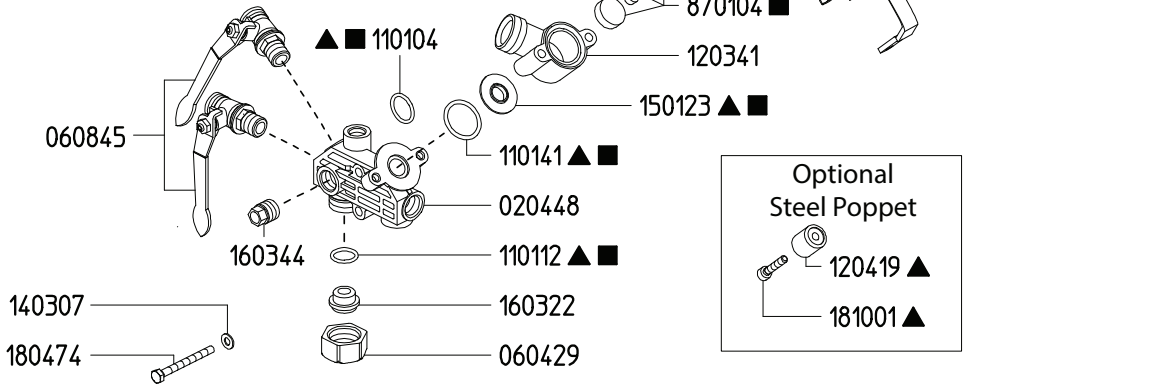
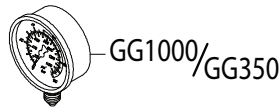
6010.24

Maximum Flow	27.0 GPM / 102 lpm
Maximum Pressure	560 PSI / 38 bar

6010.24/LP

Maximum Flow	27.0 GPM / 102 lpm
Maximum Pressure	350 PSI / 24 bar

Inlet Port - Hose Barb	-
Outlet Ports - Hose Barb, Valve	(2) 1/2" HB
Bypass - Hose Barb	3/4" HB



Revised 5-3-2021

Part #	Description	Qty
0202.25	BYPASS HOSE BARB - STRAIGHT (OPTIONAL)	1
0204.40	VALVE BODY	1
0204.48	MAIN BODY	1
0205.10	VALVE CYLINDER	1
0205.11	VALVE CYLINDER CAM	2
0254.04	BYPASS HOSE BARB - ELBOW	1
0604.09	DISCHARGE BARB NUT	2
0604.26	BYPASS BARB NUT	1
0604.29	BARB NUT	1
0605.34	GASKET	2
0608.26	1/2" HOSE BARB W/GASKET	2
0608.45	BALL VALVE; RIGHT	2
0901.24	HIGH PRESSURE SPRING "6010.24"	1
0901.47	LOW PRESSURE SPRING "6010.24/LP"	1
0902.25	DUMP VALVE LEVER	1
0903.26	DIAPHRAGM ▲■	1
1101.04	O-RING ▲■	1
1101.06	O-RING	2
1101.12	O-RING ▲■	2
1101.41	O-RING ▲■	1

Part #	Description	Qty
1203.33	BODY	1
1204.19	STEEL POPPET; "6010.24" ▲	1
1403.06	WASHER	1
1403.07	WASHER	4
1501.23	SEAT ▲■	1
1603.22	PLUG	1
1603.44	PLUG	2
1801.17	ADJUSTMENT KNOB	1
1804.74	BOLT	4
1808.10	BOLT	2
1810.01	STAINLESS STEEL BOLT; "6010.24" ▲	1
6062.88	REGULATOR CAM KIT	2
8701.04	URETHANE POPPET ASSEMBLY ■	1
GG1000	HIGH PRESSURE GAUGE - 1000 PSI "6010.24"	1
GG350	LOW PRESSURE GAUGE - 350 PSI "6010.24/LP"	1
6062.53	REPAIR KIT - 6010.24 (STEEL POPPET (KIT 552)	1
6062.55	REPAIR KIT - 6010.24/LP (KIT 554)	1

- ▲ Parts Included in Repair Kit 6062.53 (KIT 552)
- Parts Included in Repair Kit 6062.55 (KIT 554)

1. Before operating or re-operating the pump, push the manual dump valve lever (0902.25) down, so the pump will start at zero pressure. FAILURE TO DO SO WILL VOID PUMP WARRANTY.
2. Turn pressure adjustment knob (1801.17) counterclockwise to relieve spring tension. NOTE: Step 2 applies only to initial start-up, and is not necessary in daily operation of pump.
3. Start unit and let run until air is evacuated from system, when only liquid is expelled from the bypass line.
4. Return dump valve lever to the UP position. Open spray gun or spray boom and turn the pressure adjustment knob (1801.17) clockwise until desired operating pressure is achieved.

All Dimensions are WITHOUT Control Unit or Regulator

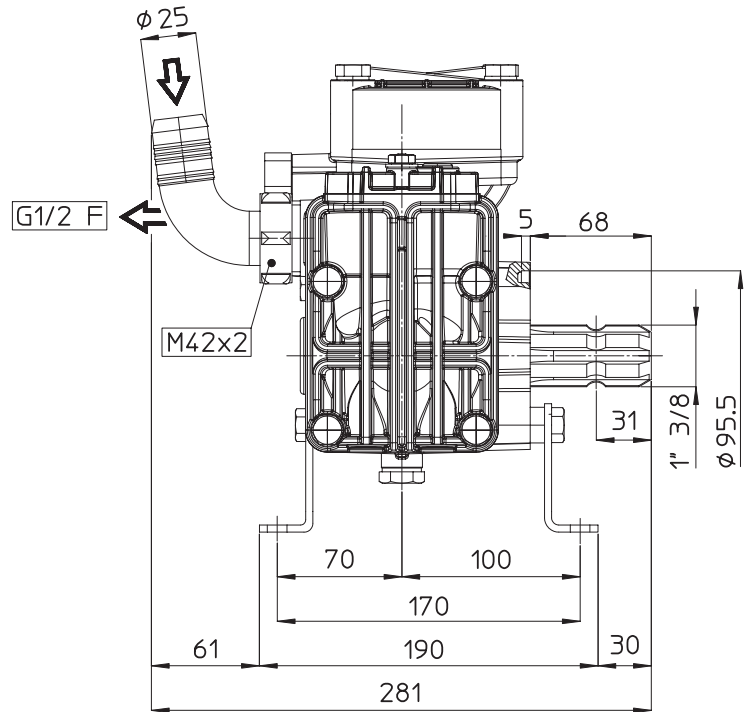
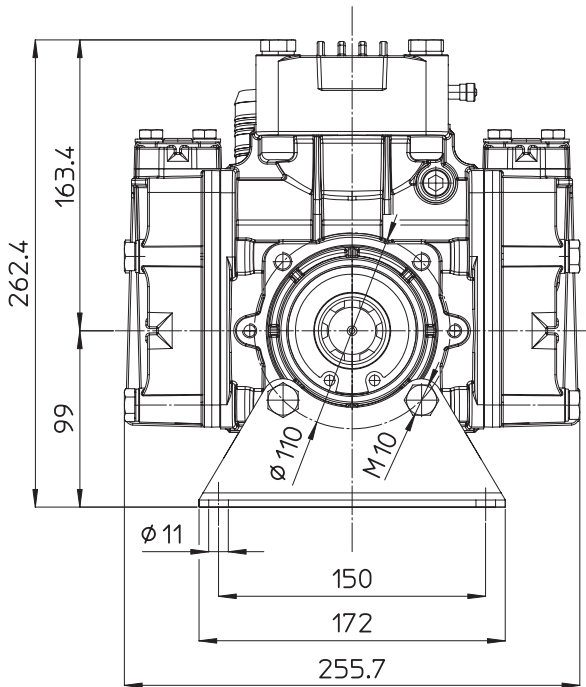
Dimensional Drawings are Shown in Millimeters. To Convert to Inches, Multiply Dimension x 0.03937

Specifications

DELTA 40

Inlet Port - Hose Barb	1" HB
Outlet Ports - Hose Barb	(2) 1/2" HB
Bypass - Hose Barb	3/4" HB
Dimensions	10.5" L x 11.5" W x 10.5" H
Diaphragm Material	GREENTECH (Std) Buna-N (Opt)

Lubrication: Requires 20 oz. of Udor Lube 40W Premium Pump Oil. Alternate Oil: 30W non-detergent or 15W-40 non-detergent oil.



TORQUE SPECS

Ref.	Description	Ft./lb.	Nm
1	Diaphragm Bolts (Use Loctite 243)	18	25
2	Head Bolts	30	40
3	Pulsation Dampener Bolts	20	28
4	Inlet Flange Bolts	-	-
5	Bearing Flange Bolts	25	34
6	Oil Cup Bolts	-	-
7	Valve Cover Bolts	-	-

